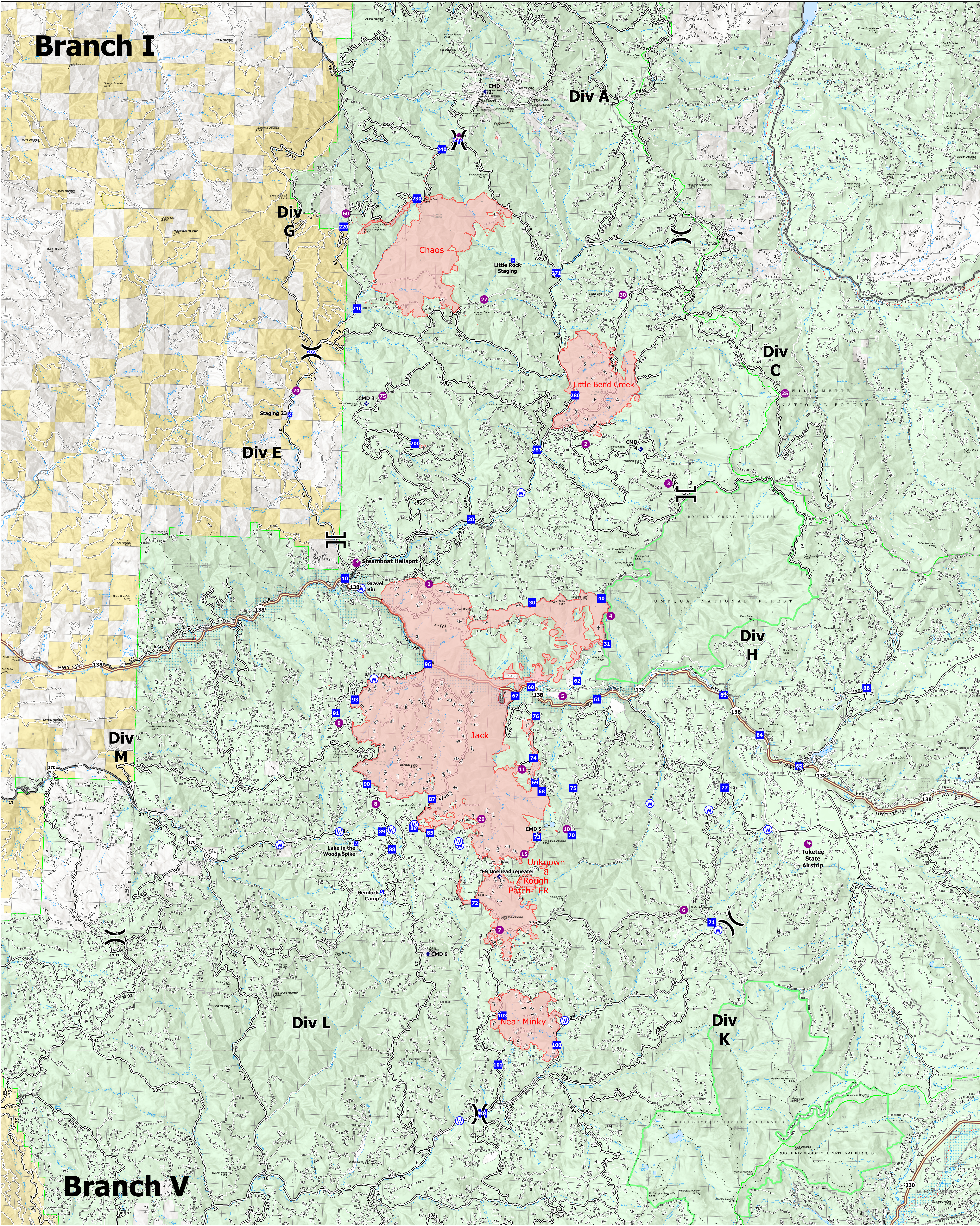


# Branch I

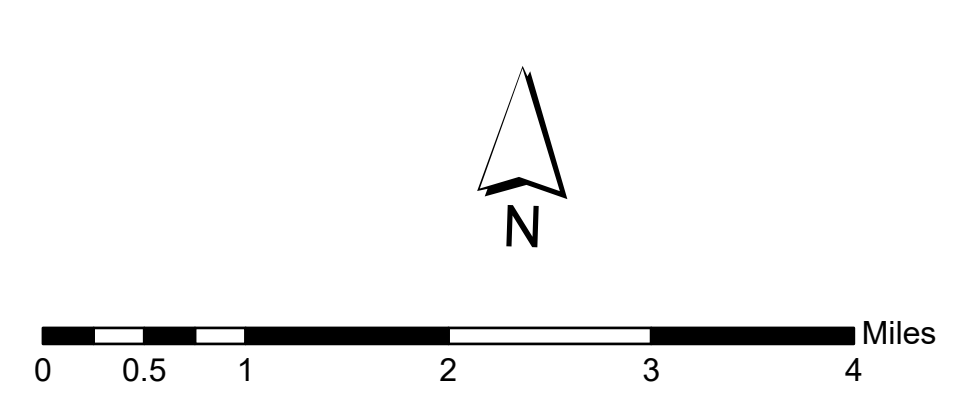


# Branch V

## Transportation

Jack Fire: 23,691 Ac  
 Rough Patch Complex: 14,591 Ac

8/18/2021



- |                  |                                 |  |                       |
|------------------|---------------------------------|--|-----------------------|
| ● Label Point    | Ⓜ Camp                          | ■ Forest Service Land                    | ■ Unknown             |
| ● Helispot       | Ⓜ Staging Area                  | ■ Administrative FS Boundary             | ■ Forest Service Land |
| ) Division Break | Ⓜ Repeater                      | ■ Ranger District Boundary               | ■ Other State Lands   |
| Branch Break     | Ⓜ Water Source                  | ■ FS Wilderness Boundary                 |                       |
| ■ Drop Point     | ■ Wildfire Daily Fire Perimeter | ■ Area of Critical Environmental Concern |                       |