
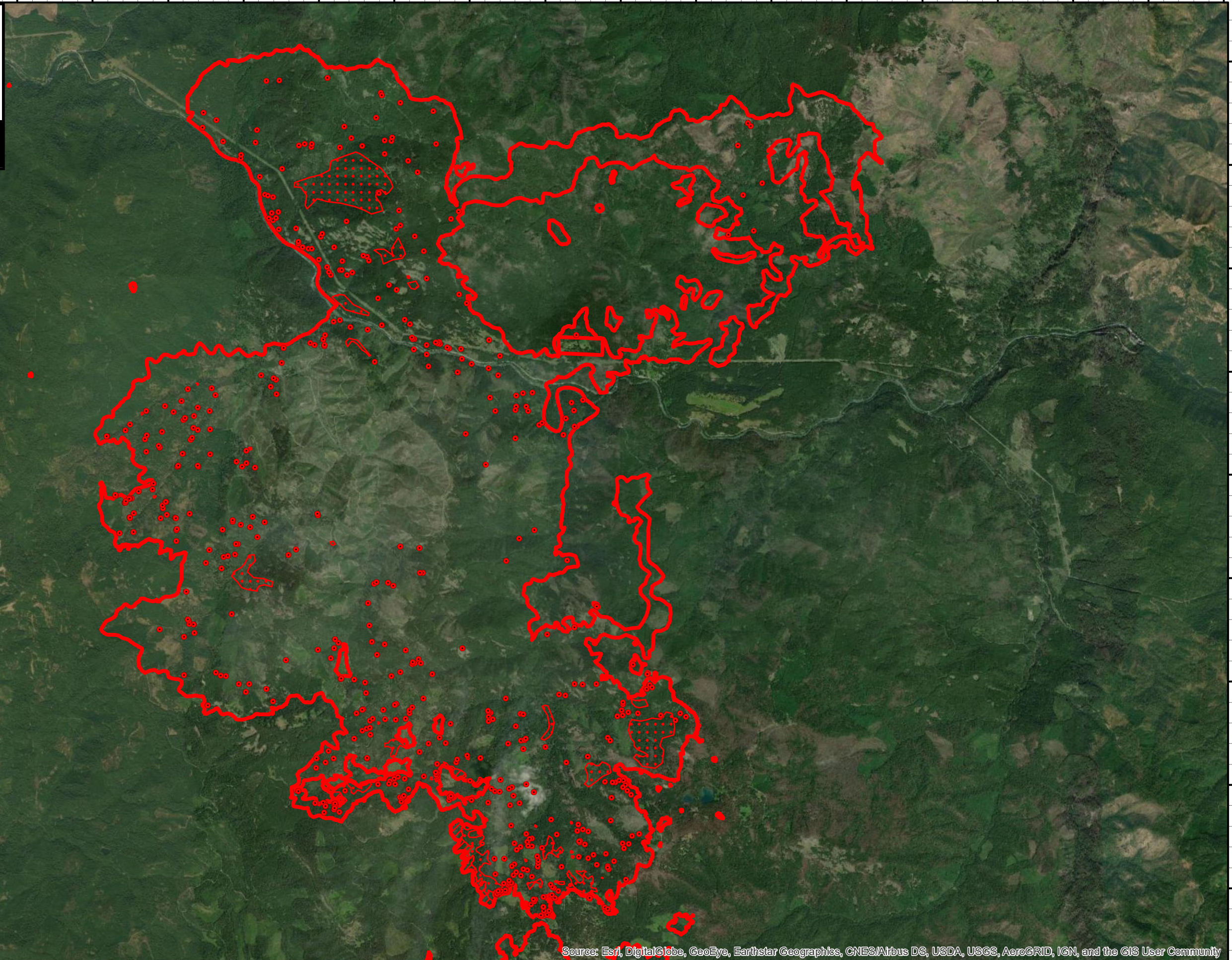


122°49'W 122°48'W 122°47'W 122°46'W 122°45'W 122°44'W 122°43'W 122°42'W 122°41'W 122°40'W 122°39'W 122°38'W 122°37'W 122°36'W 122°35'W 122°34'W 122°33'W 122°32'W 122°31'W 122°30'W 122°29'W

Jack Fire Infrared Map
OR-UPF-000265
Map Date: 8/19/2021
Imagery Date: 08/18/2021
Imagery Time: 2031 PDT
IR Interpreted Acres: 23,728
IRIN: Tina Rotenbury

- Isolated Heat Sources
- Heat Perimeter
- Intense Heat
- Scattered Heat

NAD 1983 USFS R6 Albers
 0 0.25 0.5 1 1.5 Miles

43°21'N
43°20'N
43°19'N
43°18'N
43°17'N
43°16'N
43°15'N
43°14'N
43°13'N
43°12'N

43°21'N
43°20'N
43°19'N
43°18'N
43°17'N
43°16'N
43°15'N
43°14'N
43°13'N

122°48'W 122°47'W 122°46'W 122°45'W 122°44'W 122°43'W 122°42'W 122°41'W 122°40'W 122°39'W 122°38'W 122°37'W 122°36'W 122°35'W 122°34'W 122°33'W 122°32'W 122°31'W 122°30'W 122°29'W

Source: Esri, DigitalGlobe, GeoEye, Earthstar Geographics, CNES/Airbus DS, USDA, USGS, AeroGRID, IGN, and the GIS User Community