
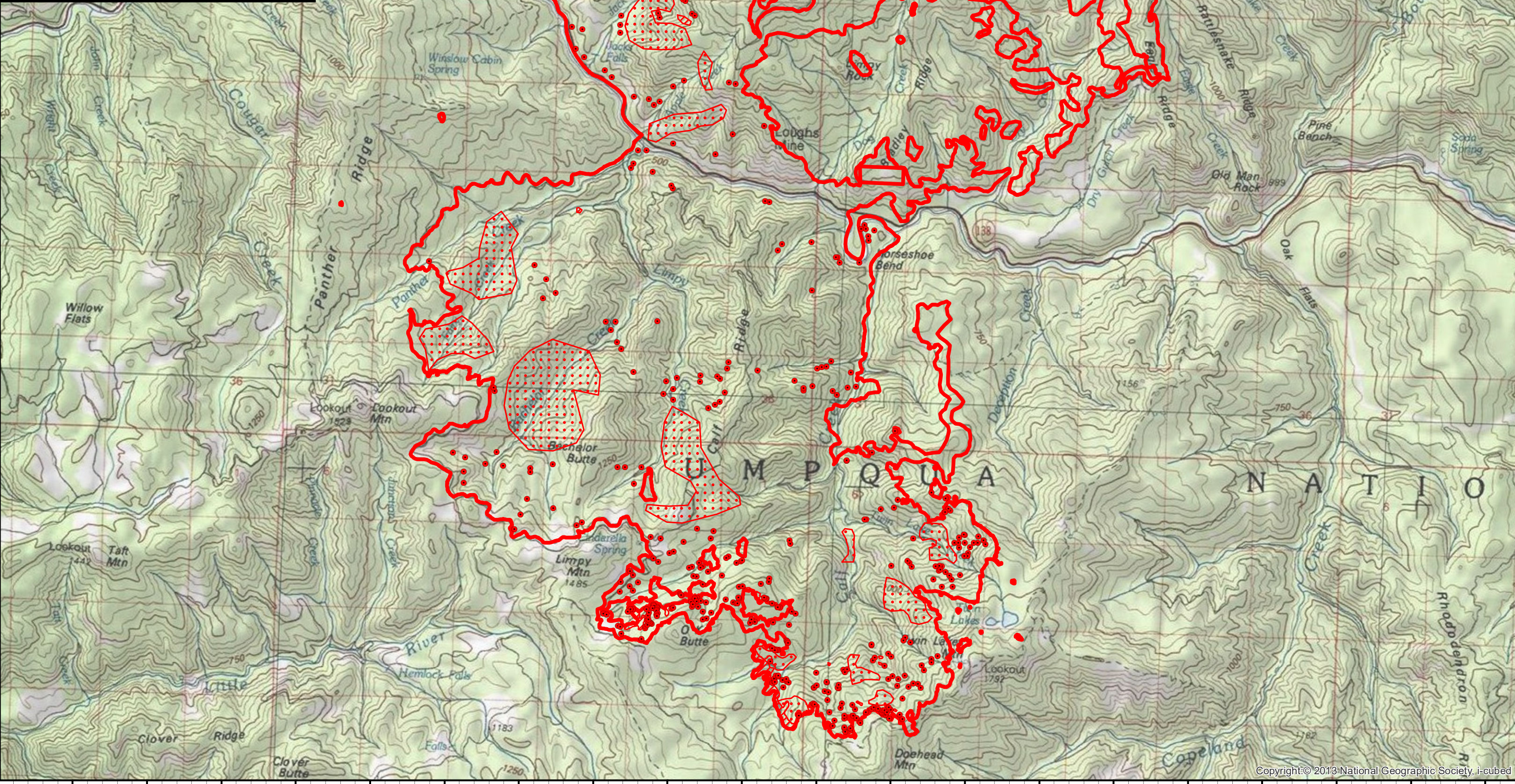


122°49'W 122°48'W 122°47'W 122°46'W 122°45'W 122°44'W 122°43'W 122°42'W 122°41'W 122°40'W 122°39'W 122°38'W 122°37'W 122°36'W 122°35'W 122°34'W 122°33'W 122°32'W 122°31'W 122°30'W 122°29'W

Jack Fire Infrared Map
OR-UPF-000265
Map Date: 8/20/2021
Imagery Date: 08/19/2021
Imagery Time: 2004 PDT
IR Interpreted Acres: 23,753
IRIN: Tina Rotenbury

- Isolated Heat Sources
- Heat Perimeter
- Intense Heat
- Scattered Heat

NAD 1983 USFS R6 Albers
 0 0.25 0.5 1 1.5 Miles

122°48'W 122°47'W 122°46'W 122°45'W 122°44'W 122°43'W 122°42'W 122°41'W 122°40'W 122°39'W 122°38'W 122°37'W 122°36'W 122°35'W 122°34'W 122°33'W 122°32'W 122°31'W 122°30'W 122°29'W