





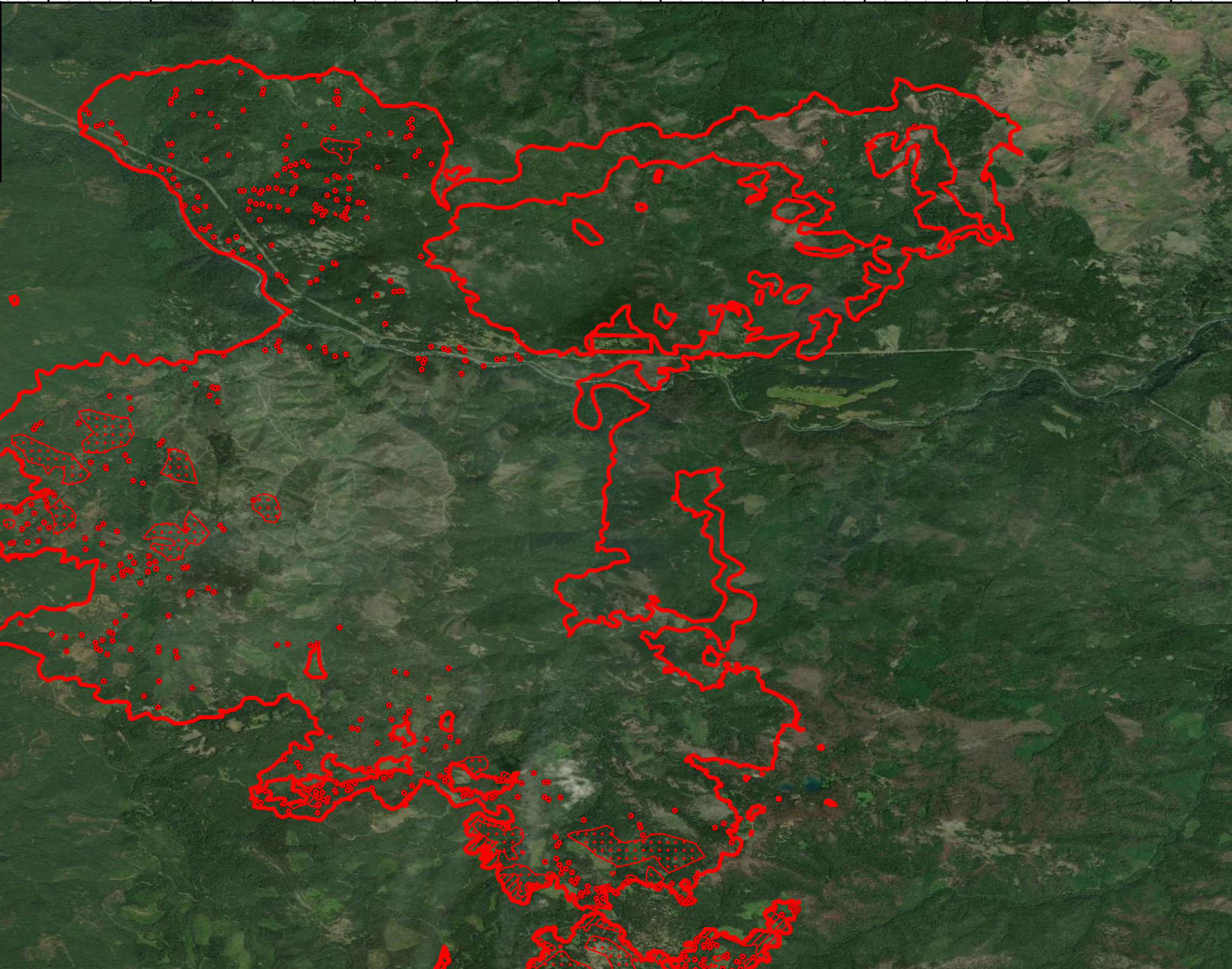


122°46'W 122°45'W 122°44'W 122°43'W 122°42'W 122°41'W 122°40'W 122°39'W 122°38'W 122°37'W 122°36'W 122°35'W 122°34'W 122°33'W 122°32'W

Jack Fire Infrared Map
OR-UPF-000265
Map Date: 8/22/2021
Imagery Date: 08/21/2021
Imagery Time: 2035 PDT
IR Interpreted Acres: 23,678
IRIN: Tina Rotenbury

-  Isolated Heat Sources
-  Heat Perimeter
-  Intense Heat
-  Scattered Heat

GCS WGS 1984
 0 0.25 0.5 1 1.5 Miles

43°21'N
43°20'N
43°19'N
43°18'N
43°17'N
43°16'N
43°15'N
43°14'N
43°13'N
43°12'N

43°21'N
43°20'N
43°19'N
43°18'N
43°17'N
43°16'N
43°15'N
43°14'N
43°13'N
43°12'N

122°46'W 122°45'W 122°44'W 122°43'W 122°42'W 122°41'W 122°40'W 122°39'W 122°38'W 122°37'W 122°36'W 122°35'W 122°34'W 122°33'W 122°32'W

Source: Esri, DigitalGlobe, GeoEye, Earthstar Geographics, CNES/Airbus DS, USDA, USGS, AeroGRID, IGN, and the GIS User Community