
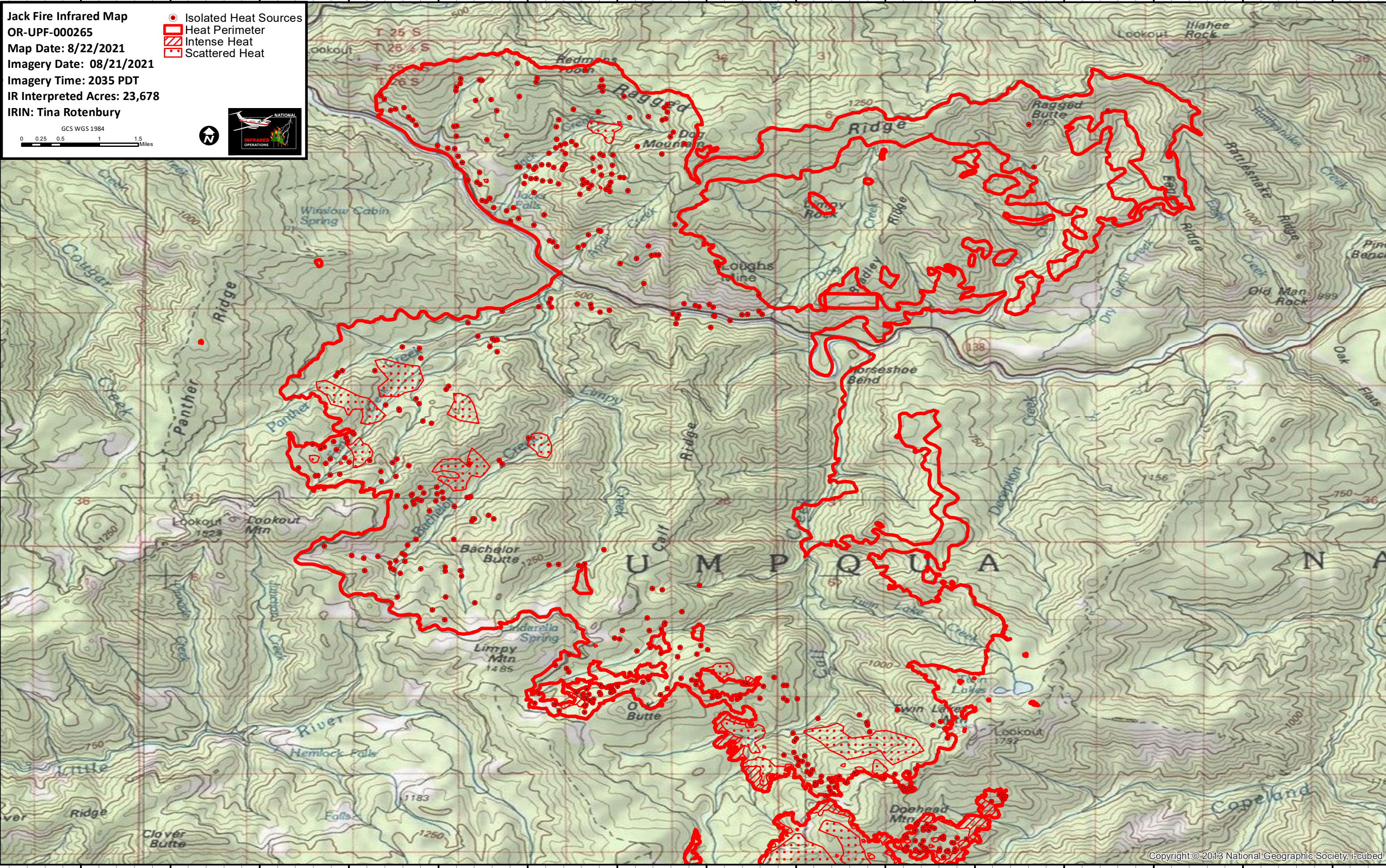


122°46'W 122°45'W 122°44'W 122°43'W 122°42'W 122°41'W 122°40'W 122°39'W 122°38'W 122°37'W 122°36'W 122°35'W 122°34'W 122°33'W 122°32'W

Jack Fire Infrared Map
OR-UPF-000265
Map Date: 8/22/2021
Imagery Date: 08/21/2021
Imagery Time: 2035 PDT
IR Interpreted Acres: 23,678
IRIN: Tina Rotenbury

- Isolated Heat Sources
- ▭ Heat Perimeter
- ▨ Intense Heat
- ▧ Scattered Heat

GCS WGS 1984
 0 0.25 0.5 1 1.5 Miles

Copyright © 2013 National Geographic Society, i-cubed

122°46'W 122°45'W 122°44'W 122°43'W 122°42'W 122°41'W 122°40'W 122°39'W 122°38'W 122°37'W 122°36'W 122°35'W 122°34'W 122°33'W 122°32'W