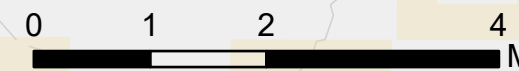
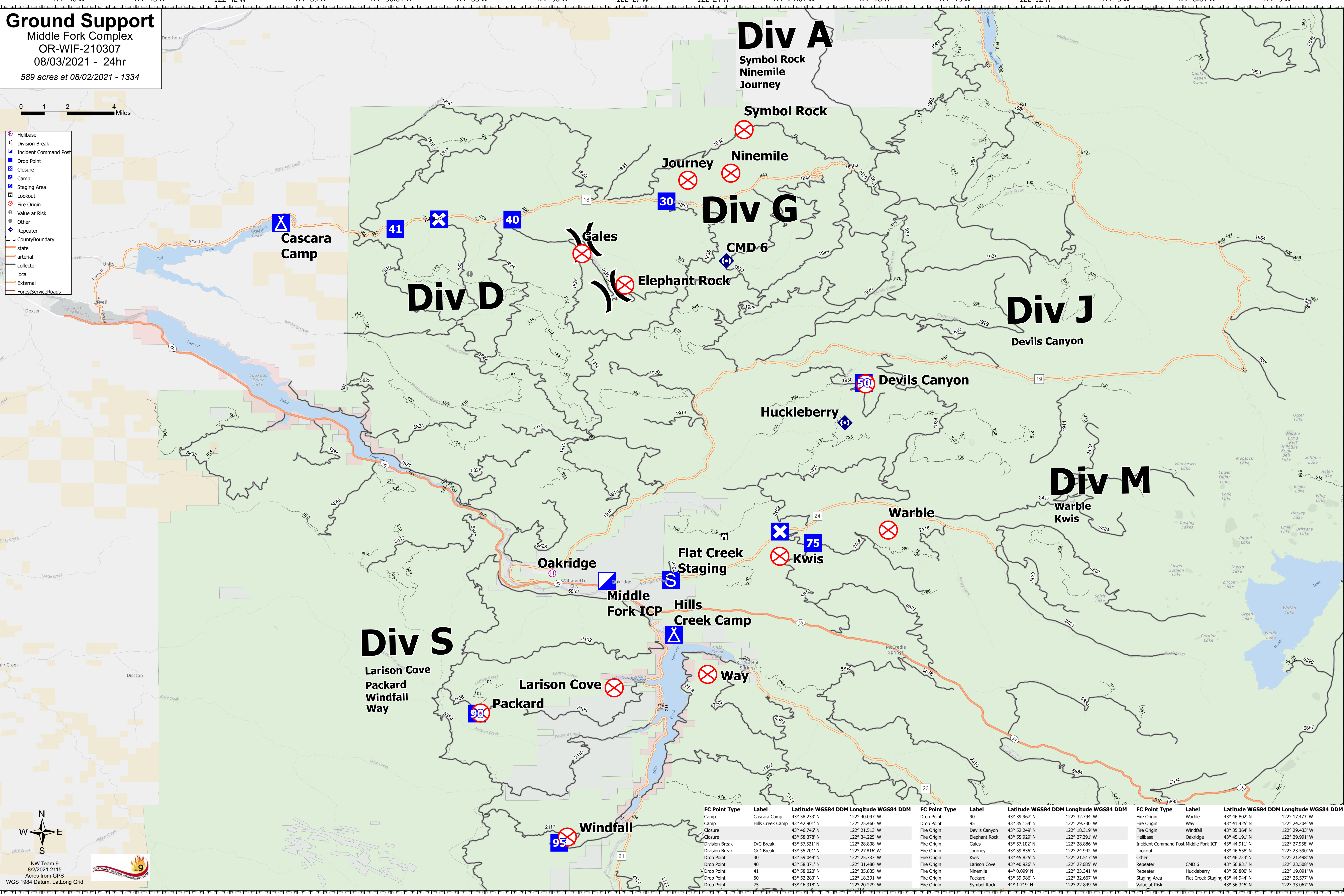


# Ground Support

Middle Fork Complex  
 OR-WIF-210307  
 08/03/2021 - 24hr  
 589 acres at 08/02/2021 - 1334



- Helibase
- Division Break
- Incident Command Post
- Drop Point
- Closure
- Camp
- Staging Area
- Lookout
- Fire Origin
- Value at Risk
- Other
- Repeater
- County Boundary
- arterial, collector, local, External
- Forest Service Roads



NW Team 9  
 8/2/2021 2115  
 Acres from GPS  
 WGS 1984 Datum, LatLong Grid

FC Point Type	Label	Latitude WGS84 DDM	Longitude WGS84 DDM	FC Point Type	Label	Latitude WGS84 DDM	Longitude WGS84 DDM	FC Point Type	Label	Latitude WGS84 DDM	Longitude WGS84 DDM
Camp	Cascara Camp	43° 58.233' N	122° 40.097' W	Fire Origin	Warble	43° 46.802' N	122° 17.473' W	Fire Origin	Warble	43° 46.802' N	122° 17.473' W
Camp	Hills Creek Camp	43° 42.801' N	122° 35.460' W	Drop Point	Way	43° 41.425' N	122° 24.204' W	Fire Origin	Way	43° 41.425' N	122° 24.204' W
Closure		43° 46.746' N	122° 21.513' W	Fire Origin	Windfall	43° 35.364' N	122° 29.433' W	Fire Origin	Windfall	43° 35.364' N	122° 29.433' W
Closure		43° 58.378' N	122° 34.225' W	Fire Origin	Oakridge	43° 45.191' N	122° 29.991' W	Fire Origin	Oakridge	43° 45.191' N	122° 29.991' W
Division Break	D/G Break	43° 57.521' N	122° 28.808' W	Fire Origin	Gales	43° 57.102' N	122° 28.886' W	Incident Command Post	Middle Fork ICP	43° 49.111' N	122° 27.958' W
G/D Break		43° 55.701' N	122° 27.816' W	Fire Origin	Journey	43° 59.835' N	122° 24.942' W	Lookout		43° 46.558' N	122° 23.590' W
Drop Point	30	43° 59.049' N	122° 25.737' W	Fire Origin	Kwis	43° 45.825' N	122° 21.517' W	Other		43° 46.723' N	122° 21.498' W
Drop Point	40	43° 58.371' N	122° 31.480' W	Fire Origin	Larison Cove	43° 40.926' N	122° 27.685' W	Repeater	CMD 6	43° 56.831' N	122° 23.508' W
Drop Point	41	43° 58.020' N	122° 35.835' W	Fire Origin	Ninemile	44° 0.099' N	122° 23.341' W	Repeater	Huckleberry	43° 50.800' N	122° 19.091' W
Drop Point	50	43° 52.283' N	122° 18.391' W	Fire Origin	Packard	43° 39.986' N	122° 32.667' W	Staging Area	Flat Creek Staging	43° 44.944' N	122° 25.577' W
Drop Point	75	43° 46.318' N	122° 20.279' W	Fire Origin	Symbol Rock	44° 1.719' N	122° 22.849' W	Value at Risk		43° 56.345' N	122° 33.067' W