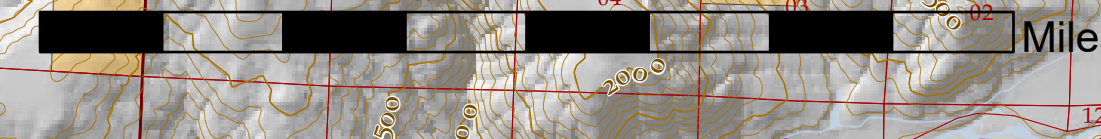


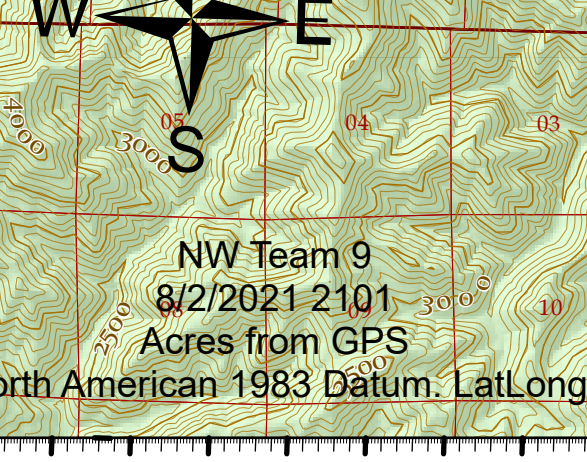
# Operations

Middle Fork Complex  
OR-WIF-210307  
08/03/2021 - 24hr

589 acres at 08/02/2021 - 1334



- FS Offices
- Helibase
- Division Break
- Incident Command Post
- Drop Point
- Closure
- Camp
- Staging Area
- Lookout
- Fire Origin
- Value at Risk
- Other
- Repeater
- BPA Transmission Lines
- Open Water - Perennial
- Open Water - Intermittent
- Wildfire Daily Fire Perimeter
- Wilderness



## Div A

Symbol Rock  
Ninemile  
Journey

## Div G

## Div J

Devils Canyon

## Div M

Warble  
Kwis

## Div S

Way  
Larison Cove  
Packard  
Windfall

Label	Latitude WGS84 DDM	Longitude WGS84 DDM
Journey	43° 59.835' N	122° 24.942' W
Ninemile	44° 0.099' N	122° 23.341' W
Symbol Rock	44° 1.719' N	122° 22.849' W
Elephant Rock	43° 55.929' N	122° 27.291' W
Kwis	43° 45.825' N	122° 21.517' W
Windfall	43° 35.364' N	122° 29.433' W
Gales	43° 57.102' N	122° 28.886' W
Packard	43° 39.986' N	122° 32.667' W
Larison Cove	43° 40.926' N	122° 27.685' W
Way	43° 41.425' N	122° 24.204' W
Warble	43° 46.802' N	122° 17.473' W
Devils Canyon	43° 52.249' N	122° 18.319' W