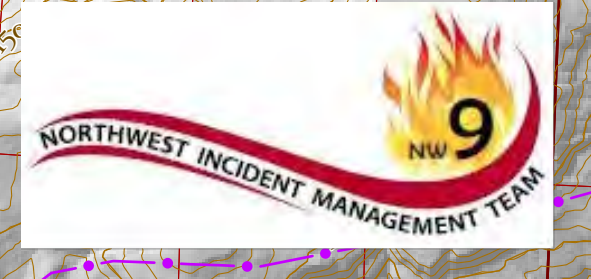
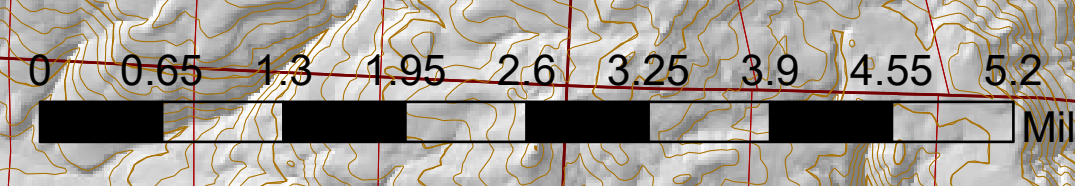
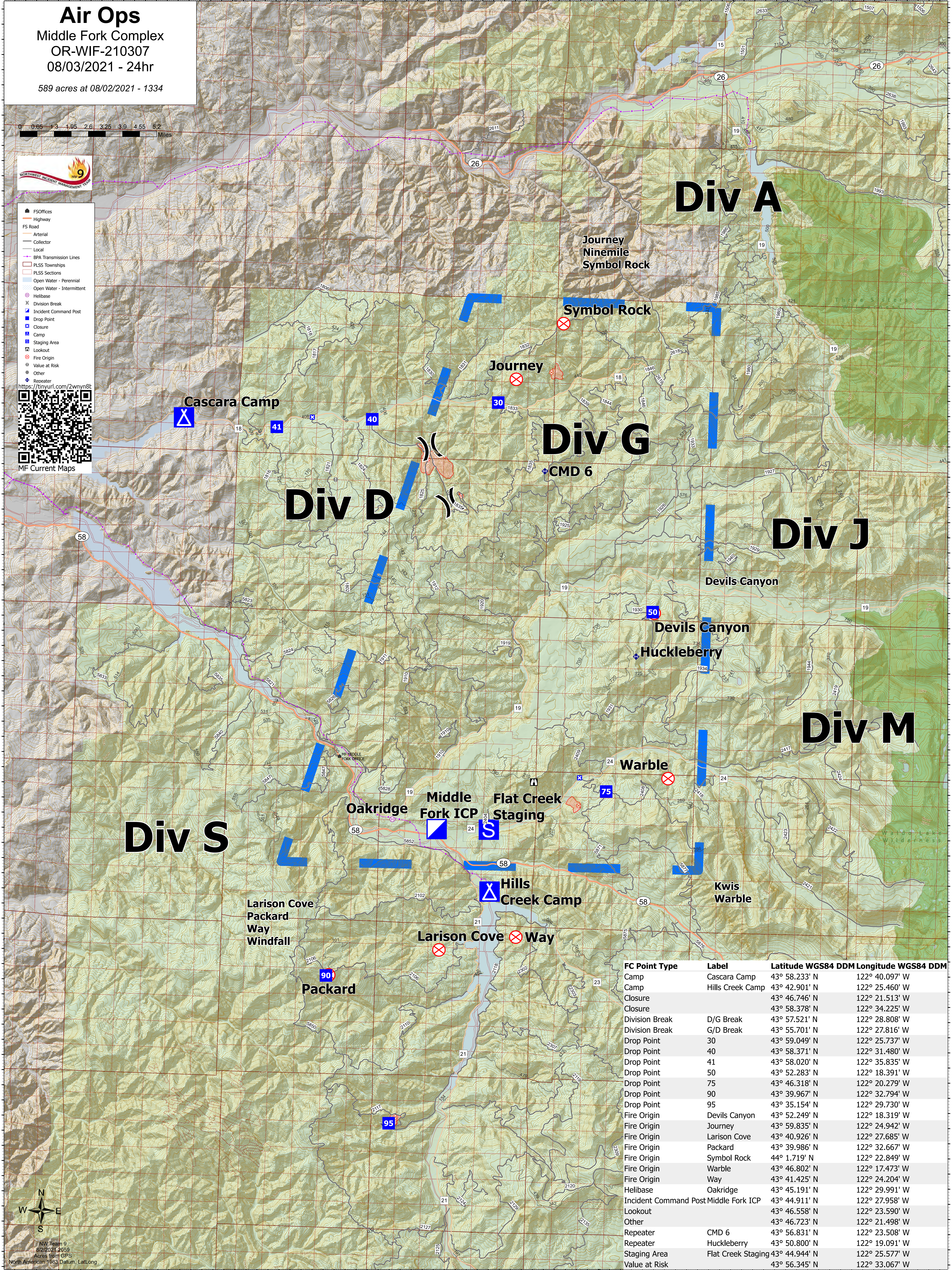


**Air Ops**  
 Middle Fork Complex  
 OR-WIF-210307  
 08/03/2021 - 24hr  
 589 acres at 08/02/2021 - 1334



- ▲ FSOffices
- Highway
- FS Road
- Arterial
- Collector
- Local
- BPA Transmission Lines
- PLS Sections
- PLS Townships
- Open Water - Perennial
- Open Water - Intermittent
- Helibase
- × Division Break
- Incident Command Post
- Drop Point
- Closure
- Camp
- Staging Area
- Lookout
- Fire Origin
- Value at Risk
- Other
- ◆ Repeater



FC Point Type	Label	Latitude WGS84 DDM	Longitude WGS84 DDM
Camp	Cascara Camp	43° 58.233' N	122° 40.097' W
Camp	Hills Creek Camp	43° 42.901' N	122° 25.460' W
Closure		43° 46.746' N	122° 21.513' W
Closure		43° 58.378' N	122° 34.225' W
Division Break	D/G Break	43° 57.521' N	122° 28.808' W
Division Break	G/D Break	43° 55.701' N	122° 27.816' W
Drop Point	30	43° 59.049' N	122° 25.737' W
Drop Point	40	43° 58.371' N	122° 31.480' W
Drop Point	41	43° 58.020' N	122° 35.835' W
Drop Point	50	43° 52.283' N	122° 18.391' W
Drop Point	75	43° 46.318' N	122° 20.279' W
Drop Point	90	43° 39.967' N	122° 32.794' W
Drop Point	95	43° 35.154' N	122° 29.730' W
Fire Origin	Devils Canyon	43° 52.249' N	122° 18.319' W
Fire Origin	Journey	43° 59.835' N	122° 24.942' W
Fire Origin	Larison Cove	43° 40.926' N	122° 27.685' W
Fire Origin	Packard	43° 39.986' N	122° 32.667' W
Fire Origin	Symbol Rock	44° 1.719' N	122° 22.849' W
Fire Origin	Warble	43° 46.802' N	122° 17.473' W
Fire Origin	Way	43° 41.425' N	122° 24.204' W
Helibase	Oakridge	43° 45.191' N	122° 29.991' W
Incident Command Post	Middle Fork ICP	43° 44.911' N	122° 27.958' W
Lookout		43° 46.558' N	122° 23.590' W
Other		43° 46.723' N	122° 21.498' W
Repeater	CMD 6	43° 56.831' N	122° 23.508' W
Repeater	Huckleberry	43° 50.800' N	122° 19.091' W
Staging Area	Flat Creek Staging	43° 44.944' N	122° 25.577' W
Value at Risk		43° 56.345' N	122° 33.067' W



NW Team 9  
 8/2/2021 2059  
 Acres from GPS  
 North American 1983 Datum, Lat/Long