

Label	Longitude WGS84 DDM	Latitude WGS84 DDM	Acres
Devils Canyon	122° 18.319' W	43° 52.249' N	0.199946
Elephant Rock	122° 27.291' W	43° 55.929' N	6.279626
Gales	122° 28.886' W	43° 57.102' N	563.886875
Journey	122° 24.942' W	44° 0.099' N	0.099977
Kwis	122° 21.517' W	43° 45.825' N	113.151037
Larison Cove	122° 27.685' W	43° 40.926' N	0.199937
Ninemile	122° 23.341' W	44° 0.099' N	112.992205
Packard	122° 32.667' W	43° 39.986' N	0.299901
Symbol Rock	122° 22.849' W	44° 1.719' N	0.099974
Warble	122° 17.473' W	43° 46.802' N	0.799755
Way	122° 24.204' W	43° 41.425' N	0.299902
Windfall	122° 29.433' W	43° 35.364' N	78.674109

0 1 2 3 Miles



NW Team 9
8/2/2021 2105

North American 1983 Datum. LatLong Grid

- Wildfire Daily Fire Perimeter
- Value at Risk
- Temporary Flight Restriction
- Helibase
- Other
- Fire Edge
- Division Break
- Repeater
- Contained Line
- Incident Command Post
- Completed Dozer Line
- PVT Land
- Drop Point
- Completed Hand Line
- USFS Land
- Closure
- Planned Dozer Line
- OTHER GOV Land
- Camp
- Planned Mixed Construction Line
- State Hwy
- Staging Area
- Planned Road as Line
- FS Arterial Rd
- Lookout
- Access or Improved Road
- FS Collector Rd
- Fire Origin
- Retardant Drop
- FS Local Rd



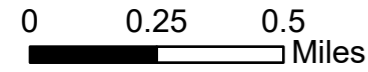
IAP
Middle Fork Complex
OR-WIF-210307
08/03/2021 - 24hr

589 acres at 08/02/2021 - 1334

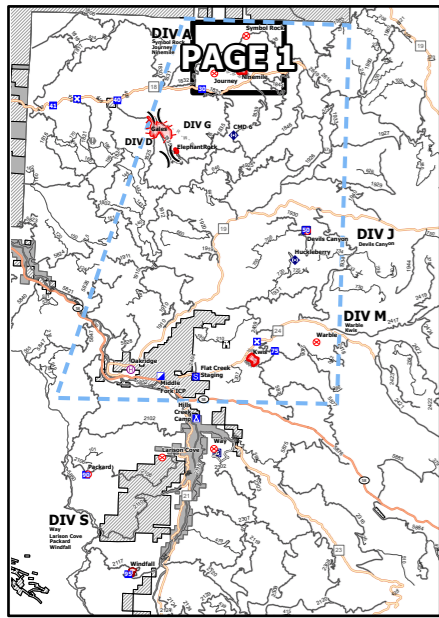
IAP

Middle Fork Complex OR-WIF-210307 08/03/2021 - 24hr

589 acres at 08/02/2021 - 1334



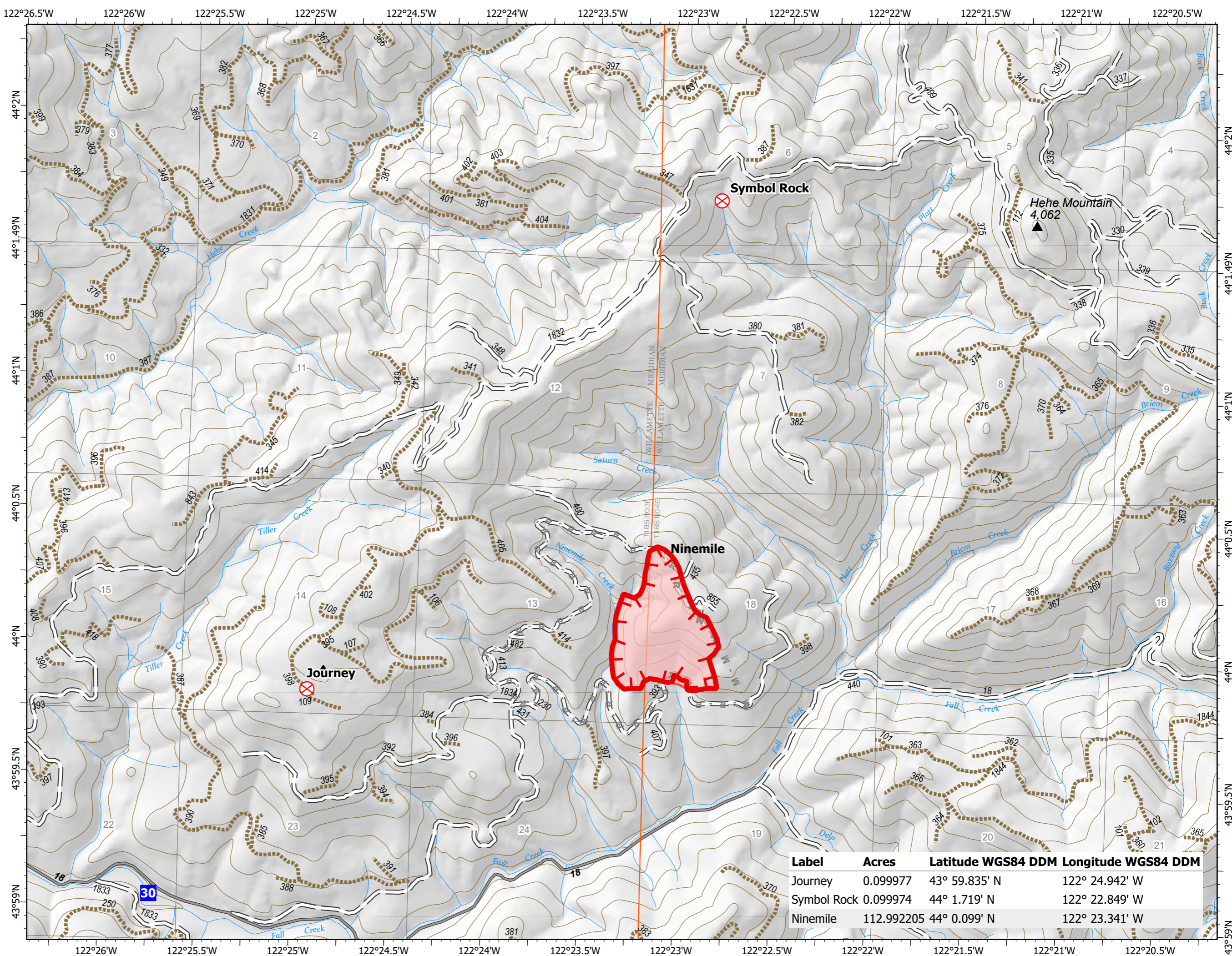
- Drop Point
- ⊗ Fire Origin
- M - Planned Mixed Construction Line
- R - Planned Road as Line
- ▬ Fire Edge
- Contained Line
- Wildfire Daily Fire Perimeter
- USFS Land
- Paved Road
- Unimproved Roads
- Closed Roads



8/2/2021 2100



North American 1983 Datum. LatLong Grid



Label	Acres	Latitude WGS84 DDM	Longitude WGS84 DDM
Journey	0.099977	43° 59.835' N	122° 24.942' W
Symbol Rock	0.099974	44° 1.719' N	122° 22.849' W
Ninemile	112.992205	44° 0.099' N	122° 23.341' W

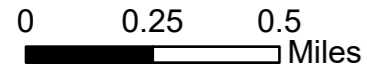
IAP

Middle Fork Complex

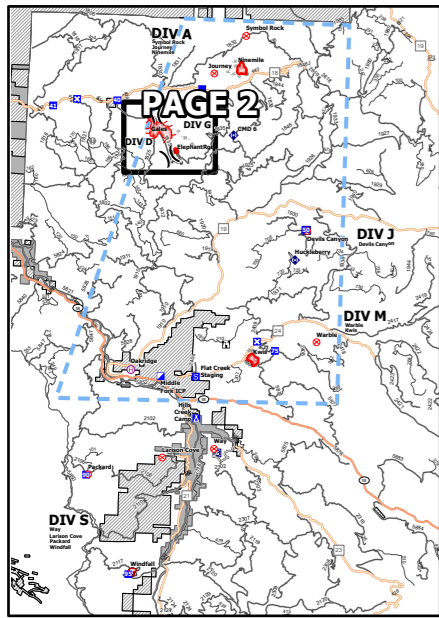
OR-WIF-210307

08/03/2021 - 24hr

589 acres at 08/02/2021 - 1334



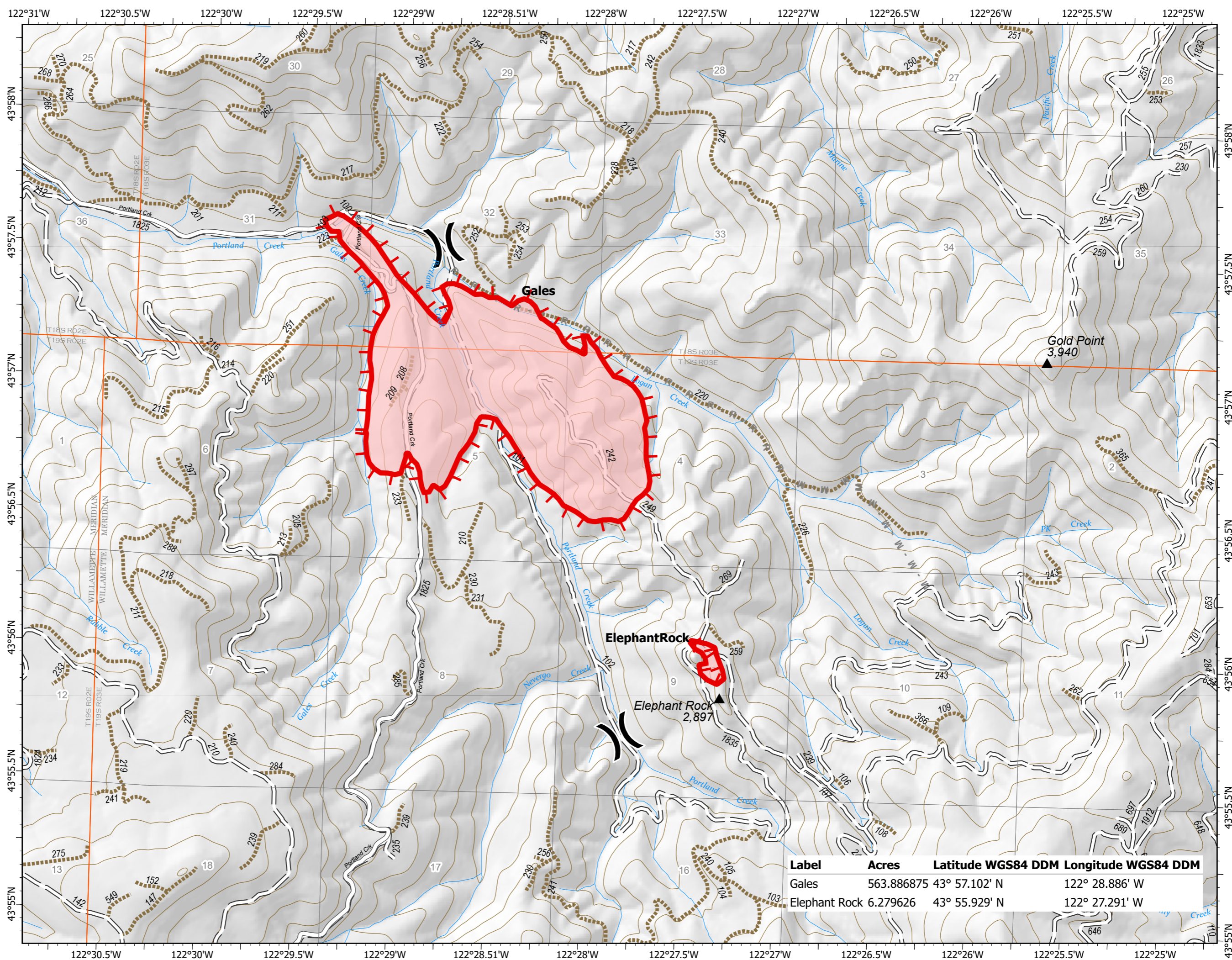
- (X) Division Break
- M - Planned Mixed Construction Line
- R - Planned Road as Line
- Fire Edge
- Wildfire Daily Fire Perimeter
- USFS Land
- Unimproved Roads
- Closed Roads



8/2/2021 2100



North American 1983 Datum. LatLong Grid



Label	Acres	Latitude WGS84 DDM	Longitude WGS84 DDM
Gales	563.886875	43° 57.102' N	122° 28.886' W
Elephant Rock	6.279626	43° 55.929' N	122° 27.291' W

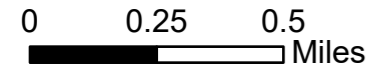
IAP

Middle Fork Complex

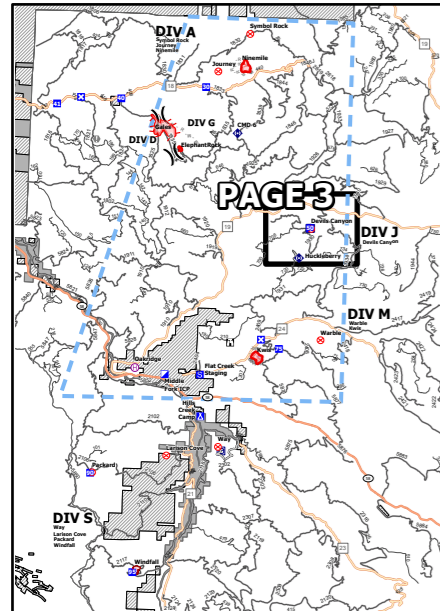
OR-WIF-210307

08/03/2021 - 24hr

589 acres at 08/02/2021 - 1334



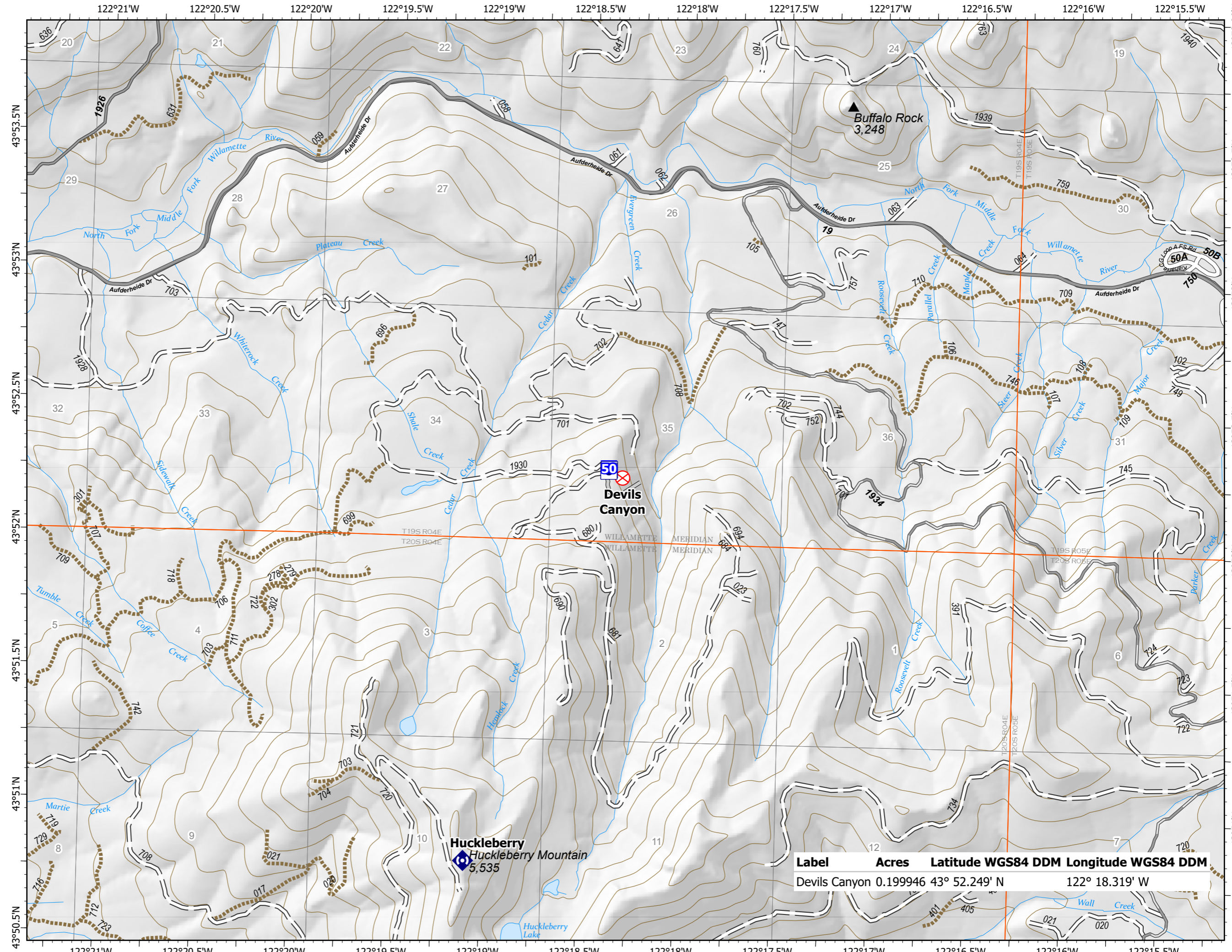
- Other Property
- P Pump
- Drop Point
- ⊗ Fire Origin
- ⊕ Repeater
- Access or Improved Road
- Contained Line
- Wildfire Daily Fire Perimeter
- USFS Land
- Paved Road
- Gravel Road
- Unimproved Roads
- Closed Roads



8/2/2021 2101



North American 1983 Datum. LatLong Grid



Label	Acres	Latitude WGS84 DDM	Longitude WGS84 DDM
Devils Canyon	0.199946	43° 52.249' N	122° 18.319' W

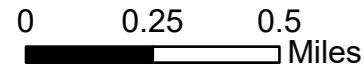
IAP

Middle Fork Complex

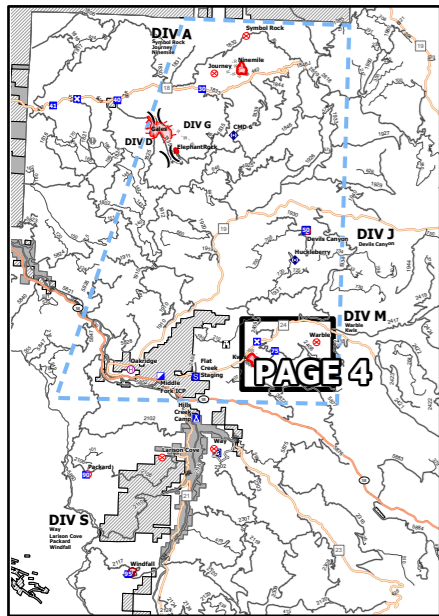
OR-WIF-210307

08/03/2021 - 24hr

589 acres at 08/02/2021 - 1334



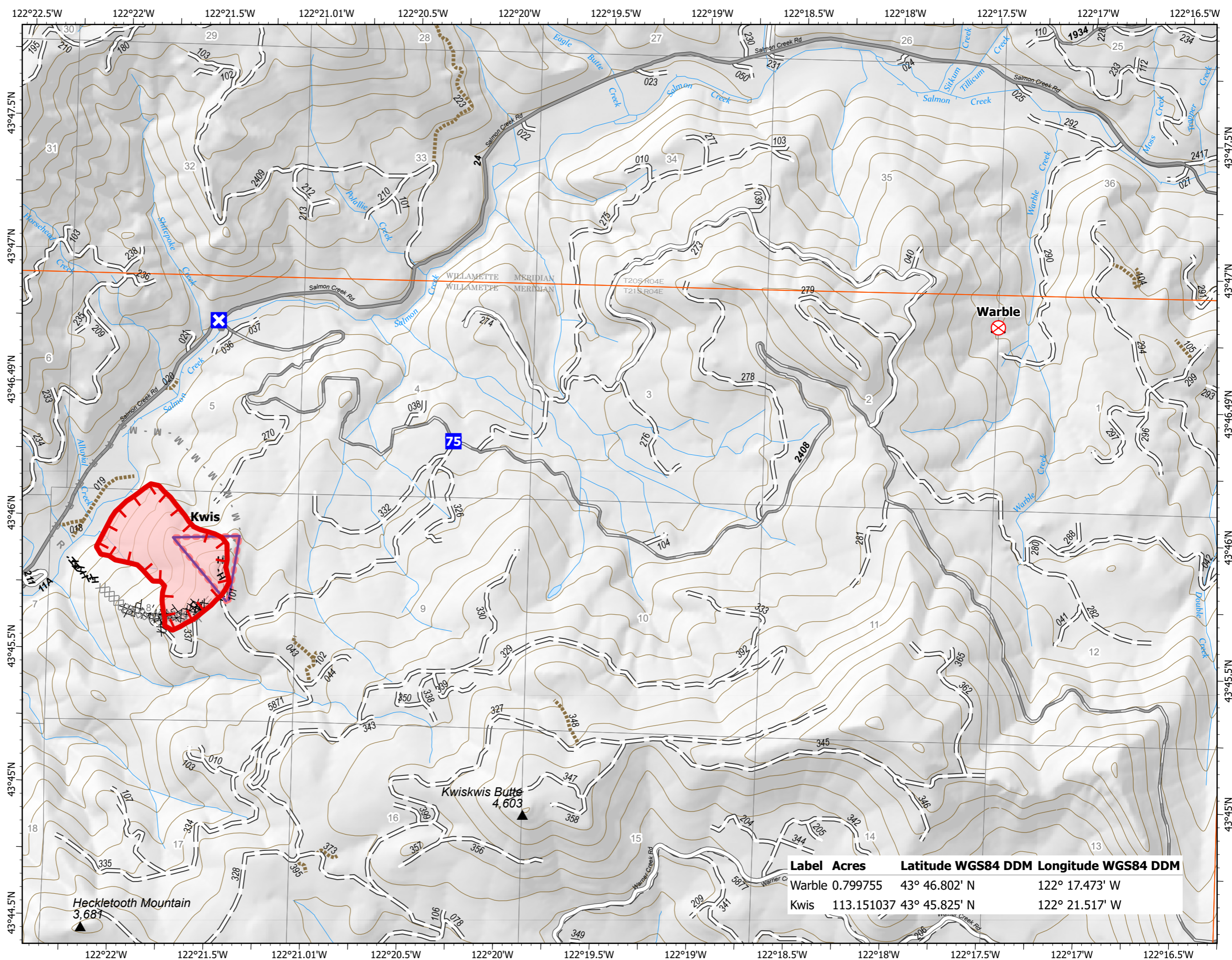
- Drop Point
- ⊠ Closure
- ⊗ Fire Origin
- Other
- ⊗ Completed Dozer Line
- H Completed Hand Line
- ⊗ Planned Dozer Line
- M Planned Mixed Construction Line
- R Planned Road as Line
- Retardant Drop
- ▬ Fire Edge
- ▬ Contained Line
- ▬ Wildfire Daily Fire Perimeter
- USFS Land
- Paved Road
- Gravel Road
- Unimproved Roads
- Closed Roads



8/2/2021 2101



North American 1983 Datum. LatLong Grid

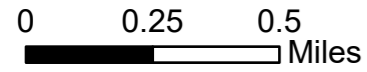


Label	Acres	Latitude WGS84 DDM	Longitude WGS84 DDM
Warble	0.799755	43° 46.802' N	122° 17.473' W
Kwis	113.151037	43° 45.825' N	122° 21.517' W

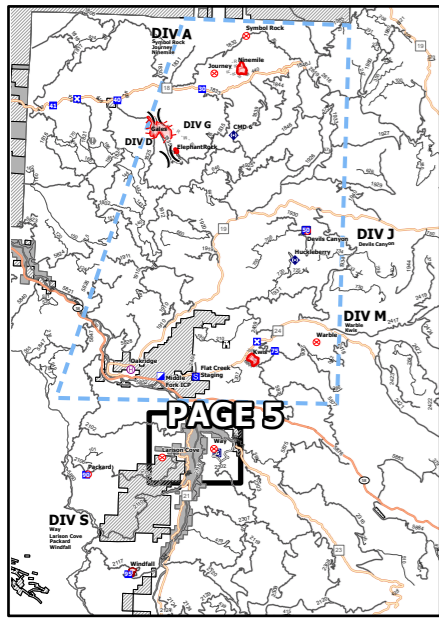
IAP

Middle Fork Complex OR-WIF-210307 08/03/2021 - 24hr

589 acres at 08/02/2021 - 1334



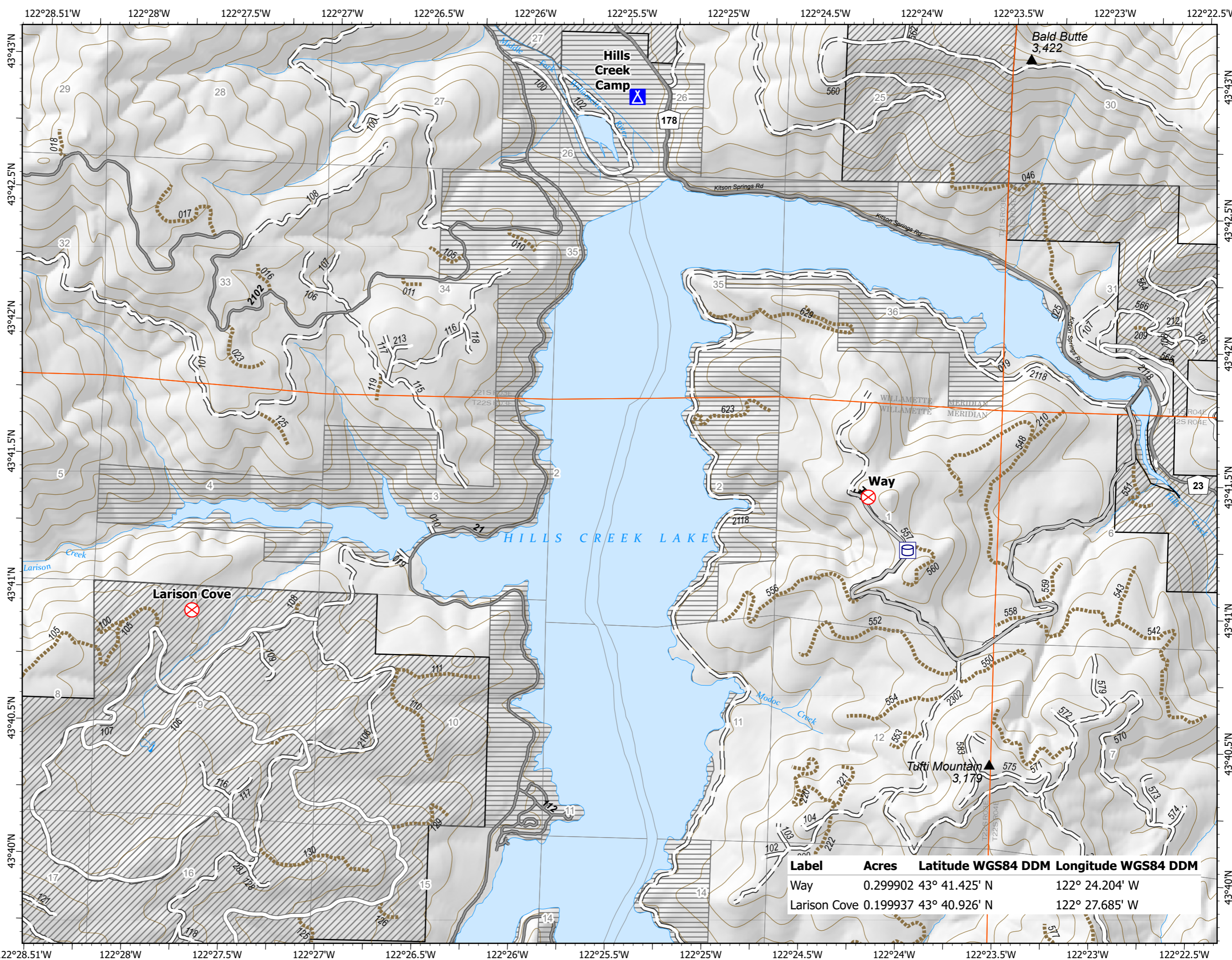
- Water Tank
- Camp
- Fire Origin
- Completed Hand Line
- Access or Improved Road
- Contained Line
- Wildfire Daily Fire Perimeter
- PVT Land
- USFS Land
- OTHER Gov Land
- Paved Road
- Unimproved Roads
- Closed Roads



8/2/2021 2102



North American 1983 Datum. LatLong Grid



Label	Acres	Latitude WGS84 DDM	Longitude WGS84 DDM
Way	0.299902	43° 41.425' N	122° 24.204' W
Larison Cove	0.199937	43° 40.926' N	122° 27.685' W

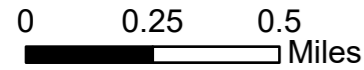
IAP

Middle Fork Complex

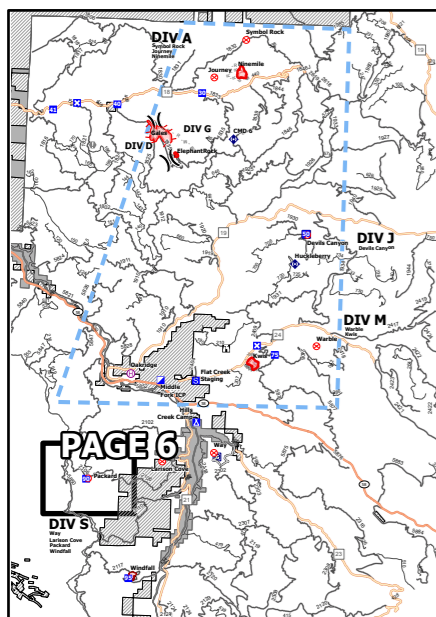
OR-WIF-210307

08/03/2021 - 24hr

589 acres at 08/02/2021 - 1334



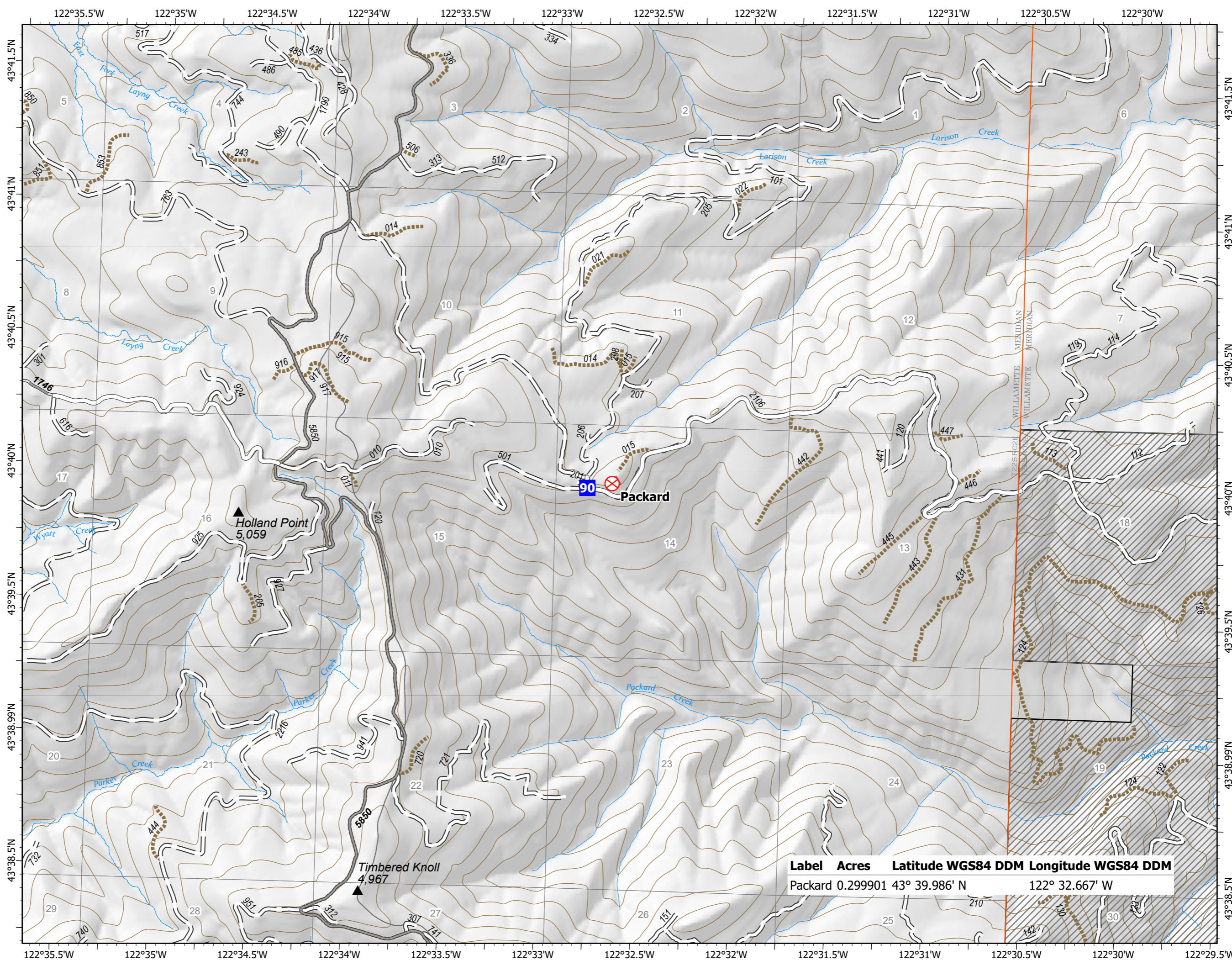
- Drop Point
- ⊗ Fire Origin
- Wildfire Daily Fire Perimeter
- PVT Land
- USFS Land
- Paved Road
- Gravel Road
- Unimproved Roads
- Closed Roads



8/2/2021 2102



North American 1983 Datum. LatLong Grid



Label	Acres	Latitude WGS84 DDM	Longitude WGS84 DDM
Packard	0.299901	43° 39.986' N	122° 32.667' W

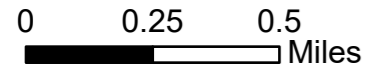
IAP

Middle Fork Complex

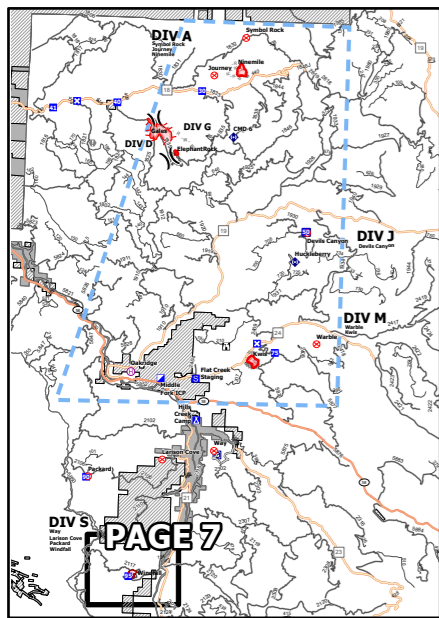
OR-WIF-210307

08/03/2021 - 24hr

589 acres at 08/02/2021 - 1334



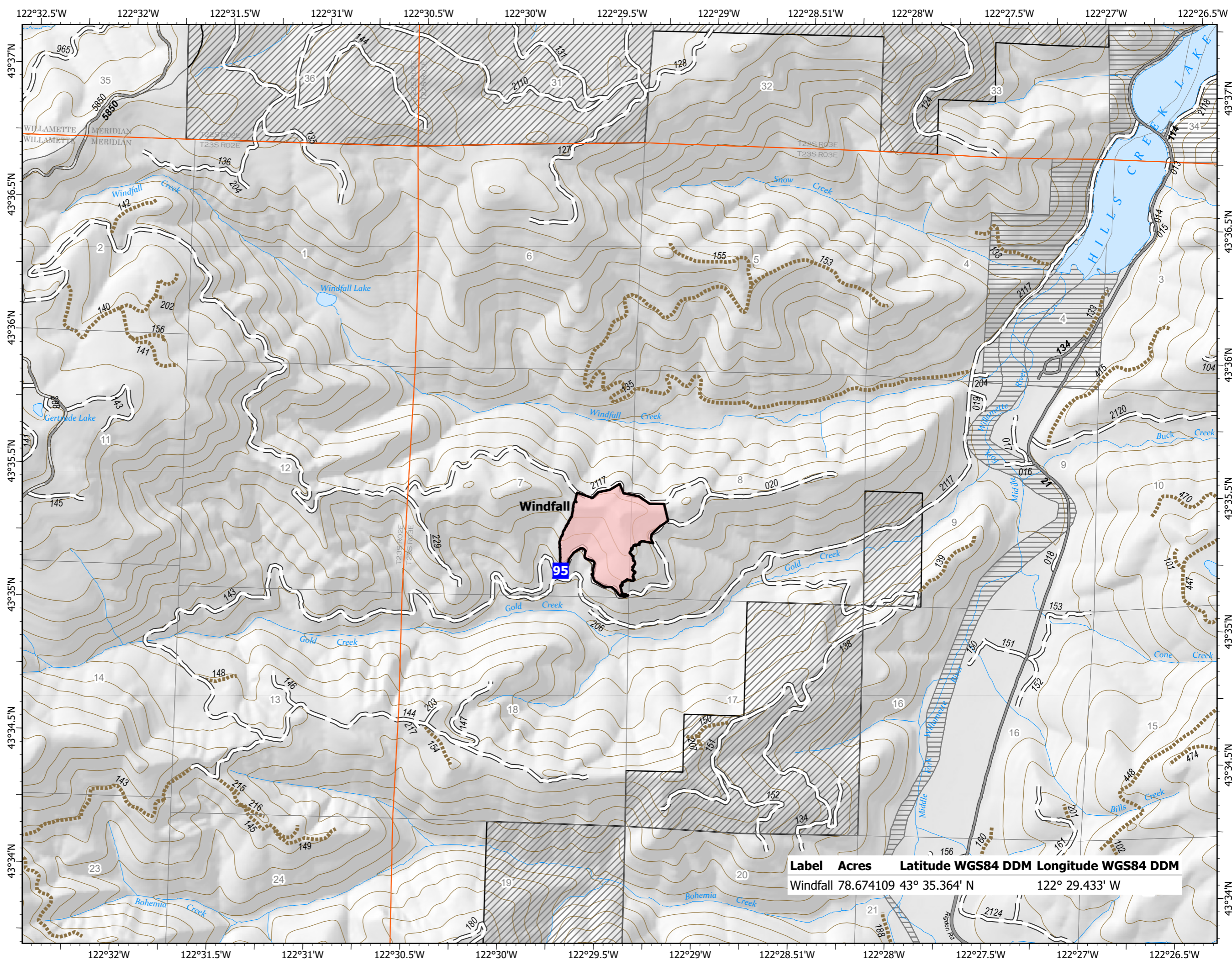
- Drop Point
- Contained Line
- Wildfire Daily Fire Perimeter
- PVT Land
- USFS Land
- OTHER Gov Land
- Paved Road
- Gravel Road
- Unimproved Roads
- Closed Roads



8/2/2021 2103



North American 1983 Datum. LatLong Grid



Label	Acres	Latitude WGS84 DDM	Longitude WGS84 DDM
Windfall	78.674109	43° 35.364' N	122° 29.433' W