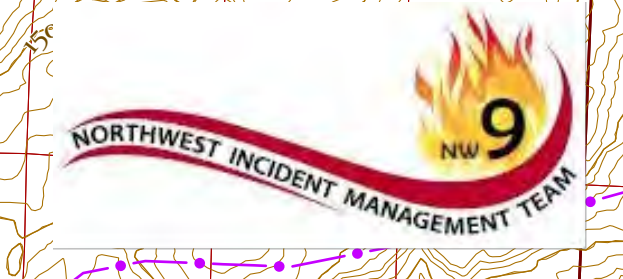
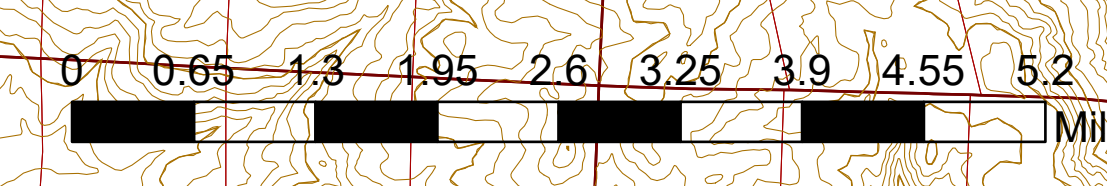
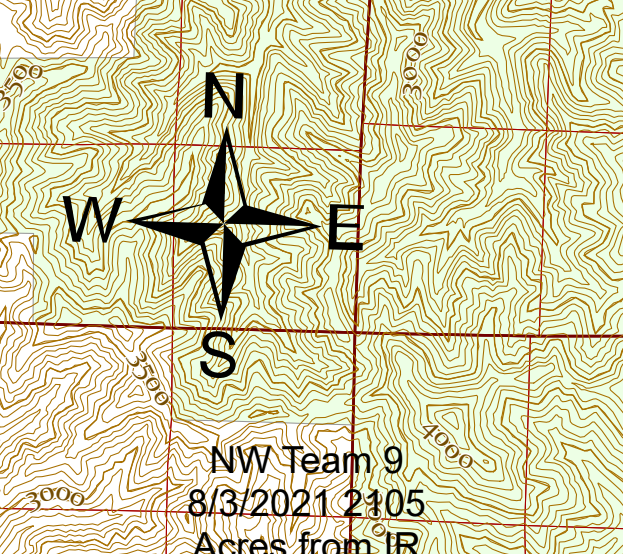


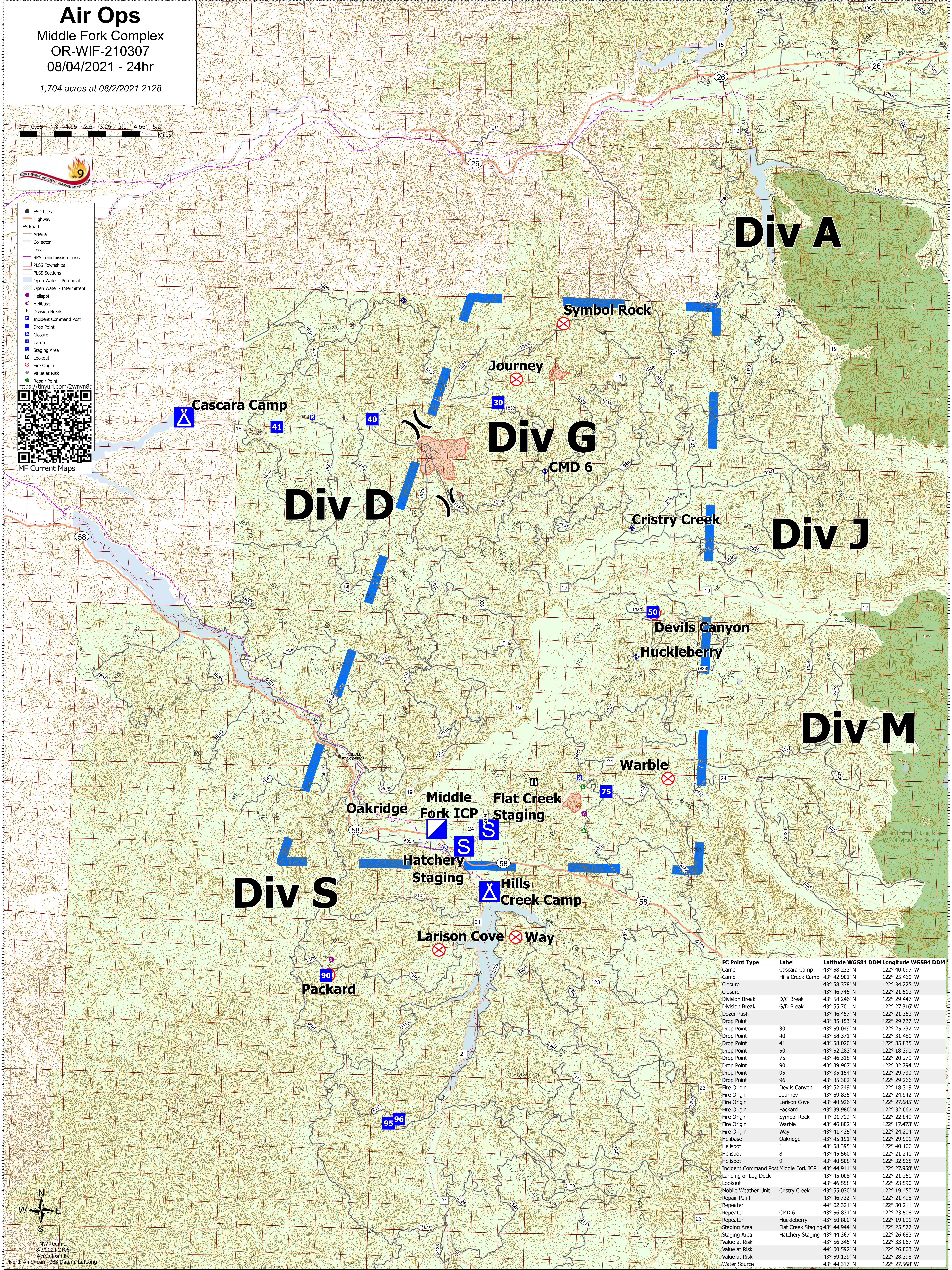
Air Ops
 Middle Fork Complex
 OR-WIF-210307
 08/04/2021 - 24hr
 1,704 acres at 08/2/2021 2128



- ▲ FSOffices
- Highway
- FS Road
- Arterial
- Collector
- Local
- BPA Transmission Lines
- PLS Sections
- PLS Townships
- Open Water - Perennial
- Open Water - Intermittent
- Helibase
- Helispot
- ⊗ Division Break
- ⊗ Incident Command Post
- ⊗ Drop Point
- ⊗ Closure
- ⊗ Camp
- ⊗ Staging Area
- ⊗ Lookout
- ⊗ Fire Origin
- ⊗ Value at Risk
- Repair Point



NW Team 9
 8/3/2021 2105
 Acres from IR
 North American 1983 Datum: Lat/Long



FC Point Type	Label	Latitude WGS84	Longitude WGS84
Camp	Cascara Camp	43° 58.233' N	122° 40.097' W
Camp	Hills Creek Camp	43° 42.901' N	122° 25.460' W
Closure		43° 58.378' N	122° 34.225' W
Closure		43° 46.746' N	122° 21.513' W
Division Break	D/G Break	43° 58.246' N	122° 29.447' W
Division Break	G/D Break	43° 55.701' N	122° 27.816' W
Dozer Push		43° 46.457' N	122° 21.353' W
Drop Point		43° 35.153' N	122° 29.727' W
Drop Point	30	43° 59.049' N	122° 25.737' W
Drop Point	40	43° 58.371' N	122° 31.480' W
Drop Point	41	43° 58.020' N	122° 35.835' W
Drop Point	50	43° 52.283' N	122° 18.391' W
Drop Point	75	43° 46.318' N	122° 20.279' W
Drop Point	90	43° 39.967' N	122° 32.794' W
Drop Point	95	43° 35.154' N	122° 29.730' W
Drop Point	96	43° 35.302' N	122° 29.266' W
Fire Origin	Devils Canyon	43° 52.249' N	122° 18.319' W
Fire Origin	Journey	43° 59.835' N	122° 24.942' W
Fire Origin	Larison Cove	43° 40.926' N	122° 27.685' W
Fire Origin	Packard	43° 39.986' N	122° 32.667' W
Fire Origin	Symbol Rock	44° 01.719' N	122° 22.849' W
Fire Origin	Warble	43° 46.802' N	122° 17.473' W
Fire Origin	Way	43° 41.425' N	122° 24.204' W
Helibase	Oakridge	43° 45.191' N	122° 29.991' W
Helispot		43° 58.395' N	122° 40.106' W
Helispot	1	43° 45.560' N	122° 21.241' W
Helispot	9	43° 40.508' N	122° 32.568' W
Incident Command Post	Middle Fork ICP	43° 44.911' N	122° 27.958' W
Landing or Log Deck		43° 45.008' N	122° 21.250' W
Lookout		43° 46.558' N	122° 23.590' W
Mobile Weather Unit	Cristry Creek	43° 55.030' N	122° 19.450' W
Repair Point		43° 46.722' N	122° 21.498' W
Repeater		44° 02.321' N	122° 30.211' W
Repeater	CMD 6	43° 56.831' N	122° 23.508' W
Repeater	Huckleberry	43° 50.800' N	122° 19.091' W
Staging Area	Flat Creek Staging	43° 44.944' N	122° 25.577' W
Staging Area	Hatchery Staging	43° 44.367' N	122° 26.683' W
Value at Risk		43° 56.345' N	122° 33.067' W
Value at Risk		44° 00.592' N	122° 26.803' W
Value at Risk		43° 59.129' N	122° 28.398' W
Water Source		43° 44.317' N	122° 27.568' W