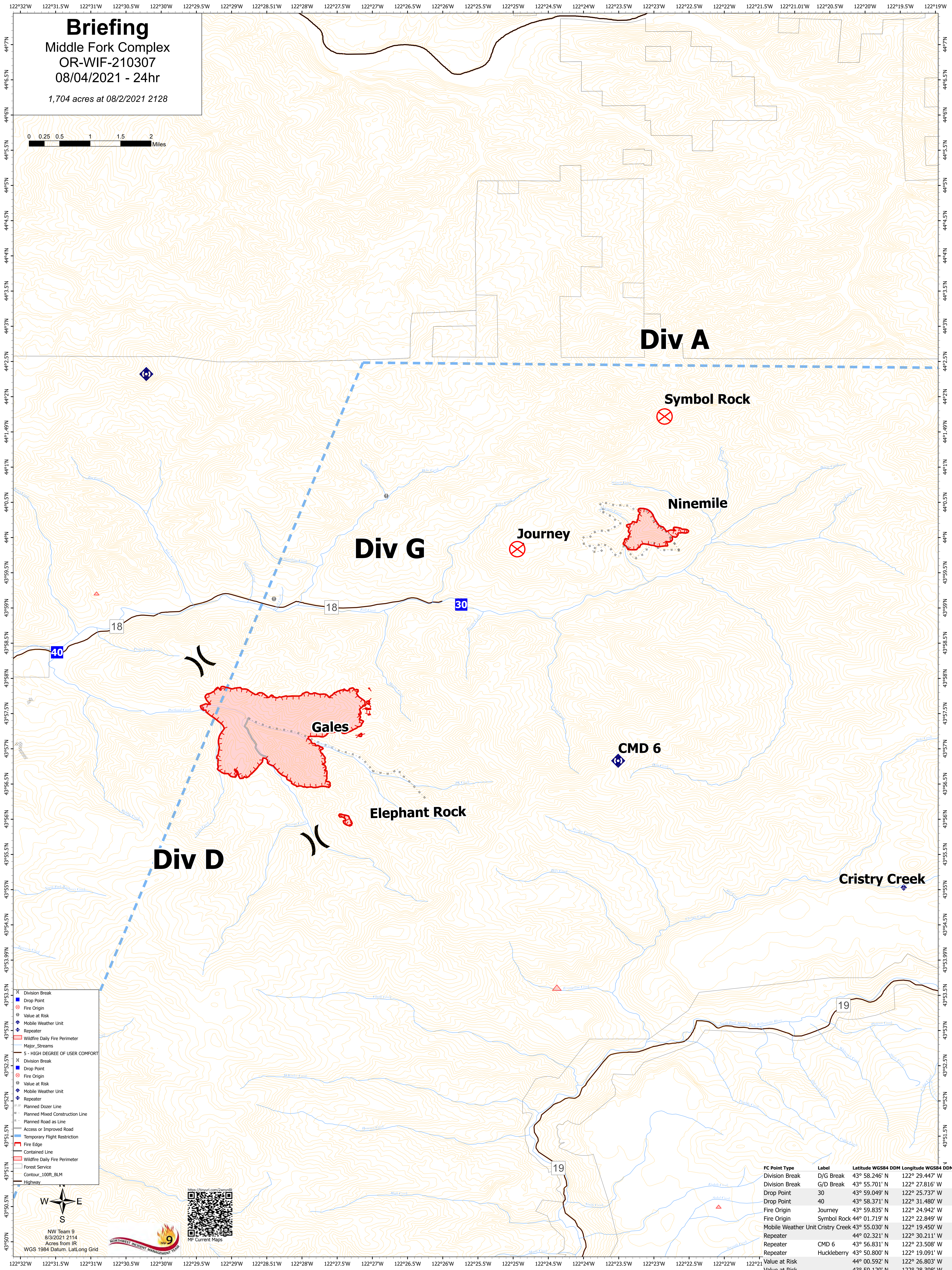
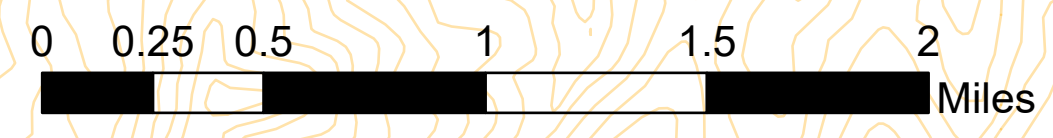


# Briefing

Middle Fork Complex  
OR-WIF-210307  
08/04/2021 - 24hr

1,704 acres at 08/2/2021 2128



- Division Break
- Drop Point
- Fire Origin
- Value at Risk
- Mobile Weather Unit
- Repeater
- Wildfire Daily Fire Perimeter
- Major Streams
- 5 - HIGH DEGREE OF USER COMFORT
- Division Break
- Drop Point
- Fire Origin
- Value at Risk
- Mobile Weather Unit
- Repeater
- Planned Dozer Line
- Planned Mixed Construction Line
- Planned Road as Line
- Access or Improved Road
- Temporary Flight Restriction
- Fire Edge
- Contained Line
- Wildfire Daily Fire Perimeter
- Forest Service
- Contour\_100ft\_BLM
- Highway



NW Team 9  
8/3/2021 2114  
Acres from IR  
WGS 1984 Datum, Lat/Long Grid

FC Point Type	Label	Latitude WGS84 DDM	Longitude WGS84 DDM
Division Break	D/G Break	43° 58.246' N	122° 29.447' W
Division Break	G/D Break	43° 55.701' N	122° 27.816' W
Drop Point	30	43° 59.049' N	122° 25.737' W
Drop Point	40	43° 58.371' N	122° 31.480' W
Fire Origin	Journey	43° 59.835' N	122° 24.942' W
Fire Origin	Symbol Rock	44° 01.719' N	122° 22.849' W
Mobile Weather Unit	Cristry Creek	43° 55.030' N	122° 19.450' W
Repeater	CMD 6	44° 02.321' N	122° 30.211' W
Repeater	Huckleberry	43° 56.831' N	122° 23.508' W
Repeater		43° 50.800' N	122° 19.091' W
Value at Risk		44° 00.592' N	122° 26.803' W
Value at Risk		43° 50.120' N	122° 28.208' W