

North Operations

Middle Fork Complex
OR-WIF-210307
08/04/2021 - 24hr
2434 acres at 08/4/2021 0053



Legend

- Division Break
- Drop Point
- Closure
- Fire Origin
- Value at Risk
- Other
- Mobile Weather Unit
- Repeater
- BPA Transmission Lines
- Highway
- FS Aerial
- FS Collector
- FS Local
- Other Roads

Event Polygon

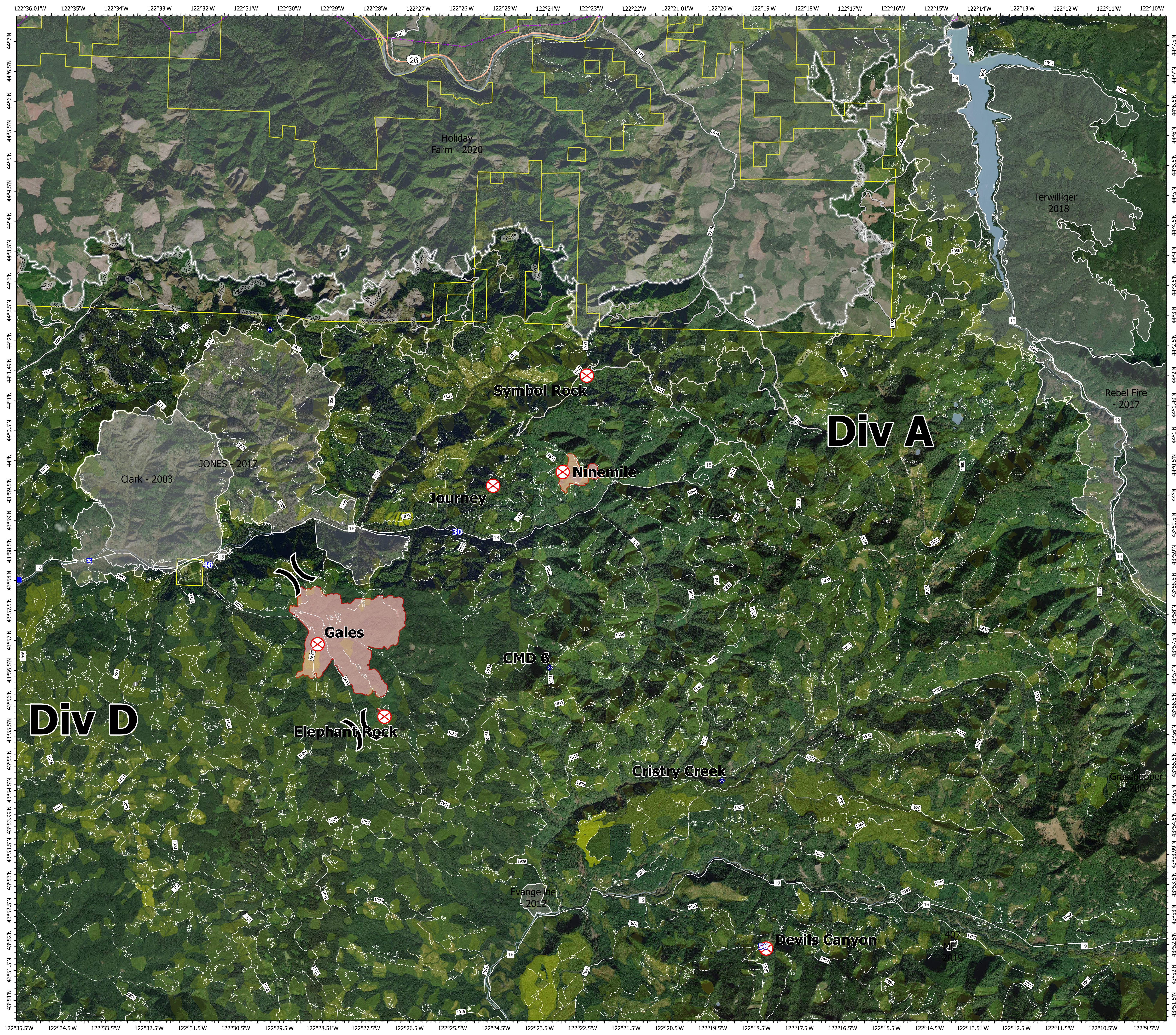
Polygon Type

- Wildfire Daily Fire Perimeter
- Open Water - Perennial
- Private

Holiday Farm 2020 Event Line

- Completed Deer Line
- Access or Improved Road
- Contained Line
- Activity/TimberHarvest_EDW_FYCompleted_WTL
- FirePerimetersHistory

FC Point Type	Label	Comments	Latitude WGS84 DDM	Longitude WGS84 DDM
Closure		Road guard	43° 58.378' N	122° 34.225' W
Division Break	D/G Break	D/G Break	43° 58.246' N	122° 29.447' W
Division Break	S/D Break	S/D Break	43° 55.701' N	122° 27.816' W
Drop Point	40	Drop Point 40 at jct of 1800 and 1825	43° 58.371' N	122° 31.480' W
Drop Point	41	Drop point 41	43° 58.020' N	122° 35.835' W
Drop Point	30	DP 30	43° 52.283' N	122° 18.391' W
Drop Point	30		43° 59.049' N	122° 25.737' W
Fire Origin	Journey		43° 59.835' N	122° 24.942' W
Fire Origin	Ninemile		44° 00.099' N	122° 23.341' W
Fire Origin	Symbol Rock		44° 01.719' N	122° 22.849' W
Fire Origin	Elephant Rock		43° 55.929' N	122° 27.291' W
Fire Origin	Gales		43° 57.102' N	122° 28.886' W
Fire Origin	Devils Canyon		43° 52.249' N	122° 18.319' W
Mobile Weather Unit	Cristry Creek	IRAHN's #10, FR 3600	43° 55.030' N	122° 19.450' W
Other		potential heli well site (option 1)		
Other		potential heli well site		
Repeater	Huckleberry		43° 50.800' N	122° 19.091' W
Repeater	CMD 6		43° 56.831' N	122° 23.508' W
Repeater	Comman 7		44° 02.321' N	122° 30.211' W
Value at Risk		Contractor quarry crushing/development and road construction equipment	43° 56.345' N	122° 33.067' W
Value at Risk		Permet Creek Contractor's equipment excavator, dump truck, crane	44° 00.592' N	122° 26.803' W
Value at Risk		Contractor's excavator parked at disposal site for permit bridge	43° 59.129' N	122° 28.398' W



0 0.35 0.7 1.05 1.4 1.75 2.1 2.45 2.8 Miles

NW Team 9
8/4/2021 0611
Acres from IR
North American 1983 Datum, Lat/Long Grid