

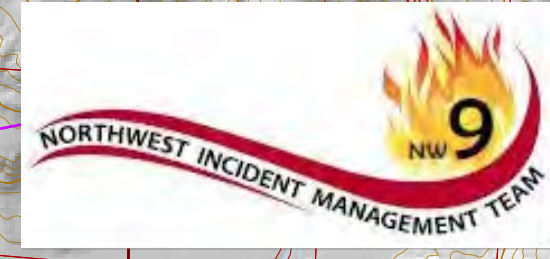
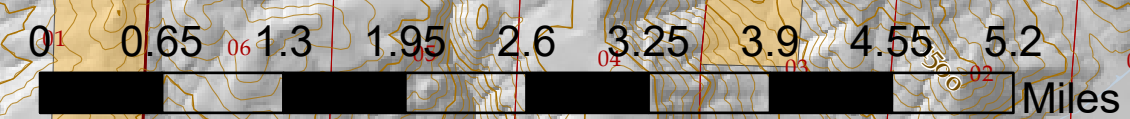
# Operations

Middle Fork Complex

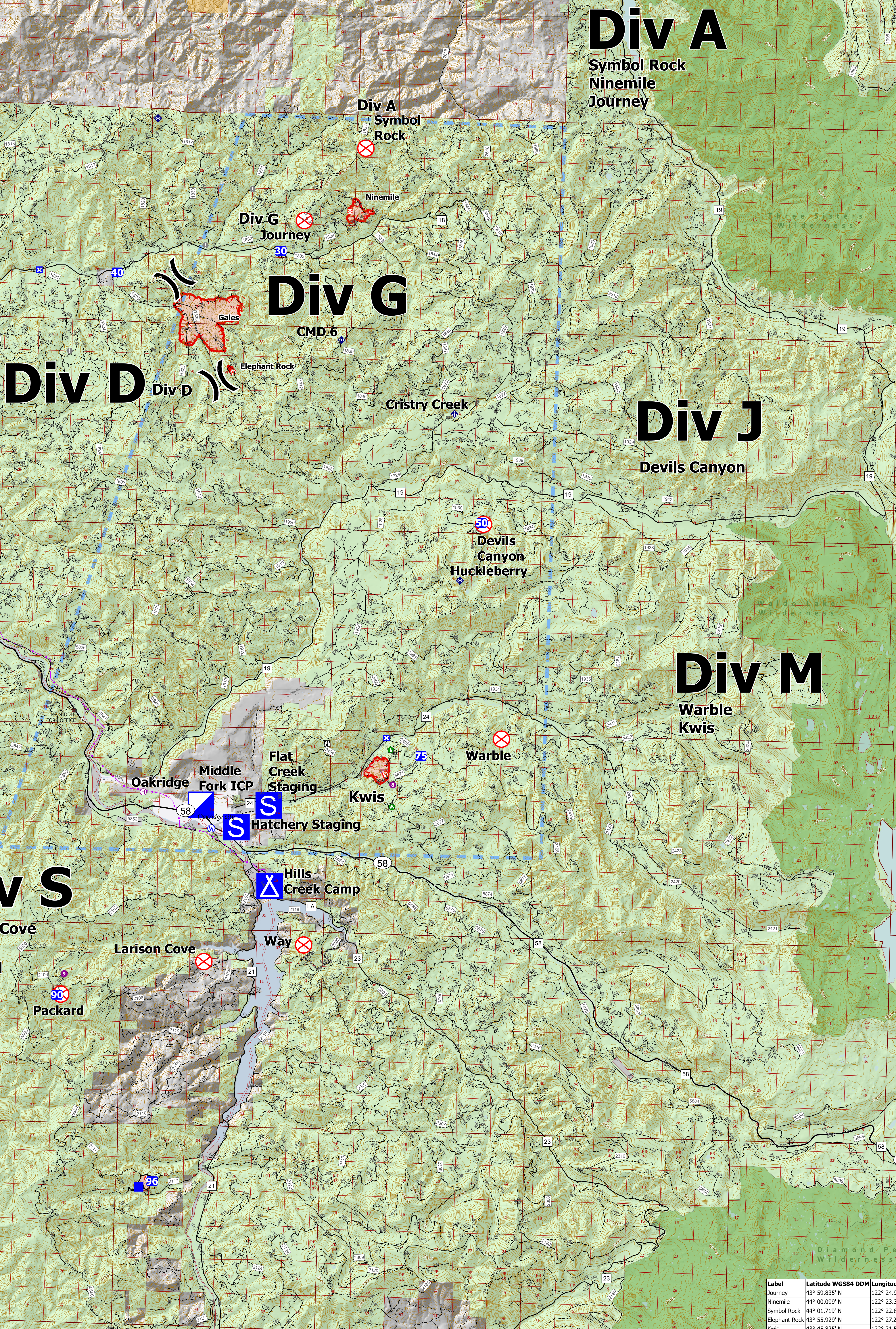
OR-WIF-210307

08/04/2021 - 24hr

1,704 acres at 08/2/2021 2128



- FS Offices
- Helispot
- Helibase
- Division Break
- Incident Command Post
- Drop Point
- Closure
- Camp
- Staging Area
- Lookout
- Fire Origin
- Value at Risk
- Repair Point
- Landing or Log Deck
- Dozer Push
- Mobile Weather Unit
- Repeater
- Water Source
- BPA Transmission Lines
- Open Water - Perennial
- Open Water - Intermittent
- Wildfire Daily Fire Perimeter
- Wilderness



**Div A**  
Symbol Rock  
Ninemile  
Journey

**Div G**  
Journey  
Gales  
Elephant Rock  
CMD 6

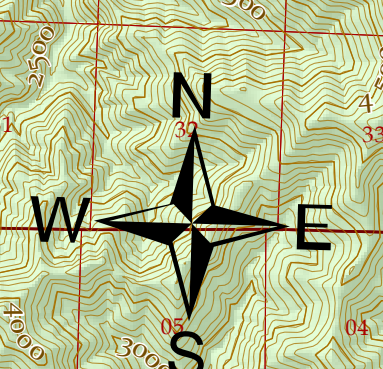
**Div D**

**Div J**  
Devils Canyon

**Div M**  
Warble  
Kwis

**Div S**  
Larison Cove  
Packard  
Windfall  
Way

Label	Latitude WGS84 DDM	Longitude WGS84 DDM
Journey	43° 59.835' N	122° 24.942' W
Ninemile	44° 00.099' N	122° 23.341' W
Symbol Rock	44° 01.719' N	122° 22.849' W
Elephant Rock	43° 55.929' N	122° 27.291' W
Kwis	43° 45.825' N	122° 21.517' W
Windfall	43° 35.364' N	122° 29.433' W
Gales	43° 57.102' N	122° 28.886' W
Packard	43° 39.986' N	122° 32.667' W
Larison Cove	43° 40.926' N	122° 27.685' W
Way	43° 41.425' N	122° 24.204' W
Warble	43° 46.802' N	122° 17.473' W
Devils Canyon	43° 52.249' N	122° 18.319' W



NW Team 9  
8/3/2021 22:19  
Acres from IR  
North American 1983 Datum, Lat/Long