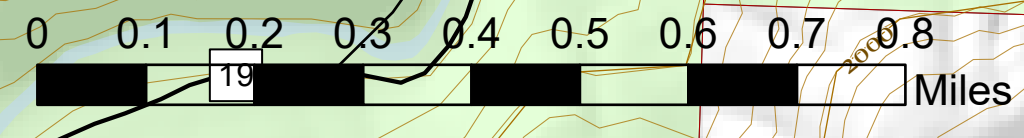


South Operations

Middle Fork Complex
OR-WIF-210307
08/04/2021 - 24hr

1,704 acres at 08/2/2021 2128

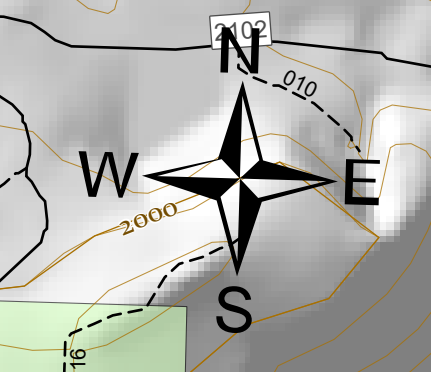


- | | |
|--------------------------|-----------------------------------|
| ● Helispot | ● Landing or Log Deck |
| ■ Drop Point | ● Dozer Push |
| ■ Closure | ● Completed Dozer Line |
| ■ Camp | ● Completed Hand Line |
| ■ Staging Area | ● Planned Dozer Line |
| ■ Lookout | ● Planned Mixed Construction Line |
| ● Repair Point | ● Planned Road as Line |
| ● Landing or Log Deck | ● Retardant Drop |
| ● Dozer Push | ● Temporary Flight Restriction |
| ● Highway | ● Fire Edge |
| ● A - ARTERIAL | ● Wildfire Daily Fire Perimeter |
| ● C - COLLECTOR | ● Fire Origin |
| ● L - LOCAL | ● Completed Dozer Line |
| ● Other Roads | ● Completed Hand Line |
| ● BPA Transmission Lines | ● Planned Dozer Line |
| ● Contour_500ft_BLM | ● Planned Mixed Construction Line |
| ● Contour_100ft_BLM | ● Planned Road as Line |
| ● PLSS Townships | ● Retardant Drop |
| ● PLSS Sections | ● Temporary Flight Restriction |
| ● Open Water - Perennial | ● Fire Edge |
| ● Helispot | ● Wildfire Daily Fire Perimeter |
| ■ Drop Point | ■ CENSUSPlaces |
| ■ Closure | ■ PVT |
| ■ Camp | ■ USFS |
| ■ Staging Area | ■ 254 |
| ■ Lookout | ■ 0 |
| ● Repair Point | |

Kwis

Flat Creek Staging

Hills Creek Camp



NW Team 9
8/3/2021 2223