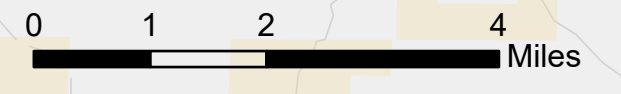
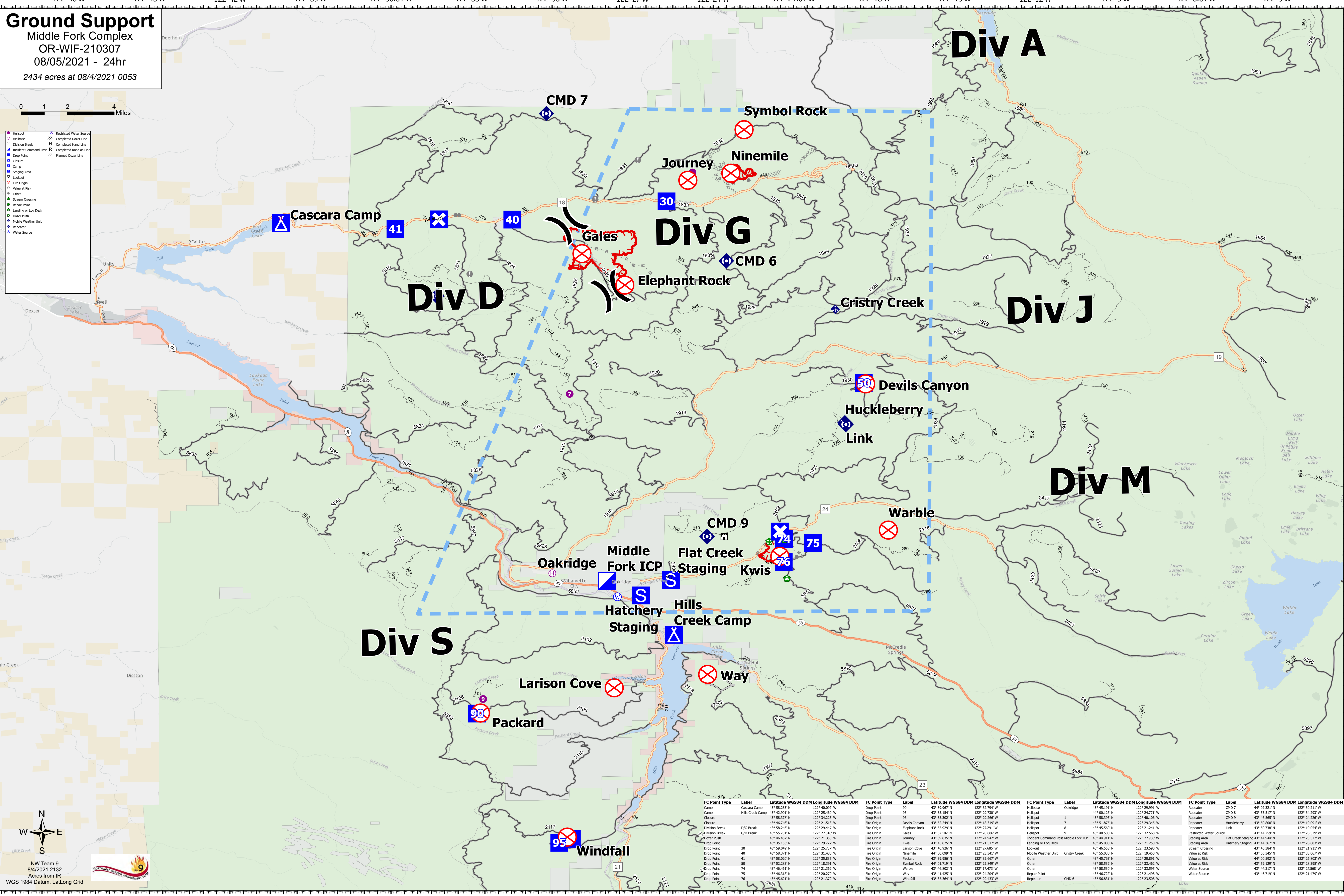


Ground Support
 Middle Fork Complex
 OR-WIF-210307
 08/05/2021 - 24hr
 2434 acres at 08/4/2021 0053



●	Helispot	⊗	Restricted Water Source
⊗	Helibase	⊗	Completed Dozer Line
⊗	Division Break	H	Completed Hand Line
⊗	Incident Command Post	R	Completed Road as Line
⊗	Drop Point	⊗	Planned Dozer Line
⊗	Closure		
⊗	Camp		
⊗	Staging Area		
⊗	Lookout		
⊗	Fire Origin		
⊗	Value at Risk		
⊗	Other		
⊗	Stream Crossing		
⊗	Repair Point		
⊗	Landing or Log Deck		
⊗	Dozer Push		
⊗	Mobile Weather Unit		
⊗	Repeater		
⊗	Water Source		

NW Team 9
 8/4/2021 2132
 Acres from IR
 WGS 1984 Datum, LatLong Grid



FC Point Type	Label	Latitude WGS84 DDM	Longitude WGS84 DDM	FC Point Type	Label	Latitude WGS84 DDM	Longitude WGS84 DDM	FC Point Type	Label	Latitude WGS84 DDM	Longitude WGS84 DDM
Drop Point	90	43° 58.237' N	122° 40.097' W	Drop Point	95	43° 39.967' N	122° 32.794' W	Helispot	Oakridge	43° 45.191' N	122° 29.991' W
Camp	Cascara Camp	43° 42.901' N	122° 25.460' W	Drop Point	96	43° 35.154' N	122° 29.730' W	Helispot	1	43° 58.395' N	122° 24.771' W
Camp	Hills Creek Camp	43° 58.378' N	122° 34.225' W	Drop Point	97	43° 35.302' N	122° 29.266' W	Helispot	7	43° 58.800' N	122° 34.231' W
Closure	D/G Break	43° 46.740' N	122° 21.512' W	Fire Origin	Devis Canyon	43° 52.249' N	122° 18.319' W	Helispot	8	43° 51.875' N	122° 30.980' N
Division Break	D/G Break	43° 58.240' N	122° 29.447' W	Fire Origin	Elephant Rock	43° 55.929' N	122° 27.291' W	Helispot	9	43° 45.560' N	122° 21.241' W
Drop Point	40	43° 55.701' N	122° 27.816' W	Fire Origin	Gales	43° 57.102' N	122° 28.886' W	Helispot	8	43° 40.508' N	122° 32.568' W
Drop Point	41	43° 46.857' N	122° 21.353' W	Fire Origin	Journey	43° 59.835' N	122° 24.942' W	Incident Command Post	Middle Fork ICP	43° 44.911' N	122° 29.958' W
Drop Point	41	43° 35.153' N	122° 29.727' W	Fire Origin	Kwis	43° 45.825' N	122° 21.517' W	Landing or Log Deck	Middle Fork ICP	43° 45.008' N	122° 21.250' W
Drop Point	30	43° 59.049' N	122° 25.737' W	Fire Origin	Larison Cove	43° 40.926' N	122° 27.685' W	Lookout	Middle Fork ICP	43° 46.558' N	122° 23.590' W
Drop Point	40	43° 58.371' N	122° 31.480' W	Fire Origin	Ninemile	44° 00.099' N	122° 23.341' W	Lookout	Middle Fork ICP	43° 55.039' N	122° 19.450' W
Drop Point	41	43° 58.007' N	122° 38.835' W	Fire Origin	Packard	43° 39.986' N	122° 33.667' W	Other	Middle Fork ICP	43° 45.793' N	122° 26.891' W
Drop Point	50	43° 52.283' N	122° 18.391' W	Fire Origin	Symbol Rock	44° 01.719' N	122° 22.849' W	Other	Middle Fork ICP	43° 58.532' N	122° 33.462' W
Drop Point	74	43° 46.461' N	122° 21.362' W	Fire Origin	Warble	43° 46.802' N	122° 17.473' W	Other	Middle Fork ICP	43° 58.539' N	122° 33.595' W
Drop Point	75	43° 46.318' N	122° 20.299' W	Fire Origin	Way	43° 41.425' N	122° 24.204' W	Repair Point	Middle Fork ICP	43° 46.722' N	122° 21.498' W
Drop Point	76	43° 45.621' N	122° 21.372' W	Fire Origin	Windfall	43° 35.364' N	122° 29.433' W	Repeater	Middle Fork ICP	43° 56.831' N	122° 23.508' W