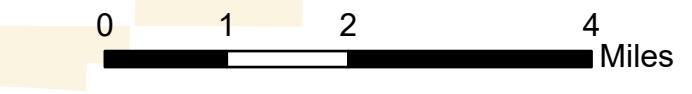
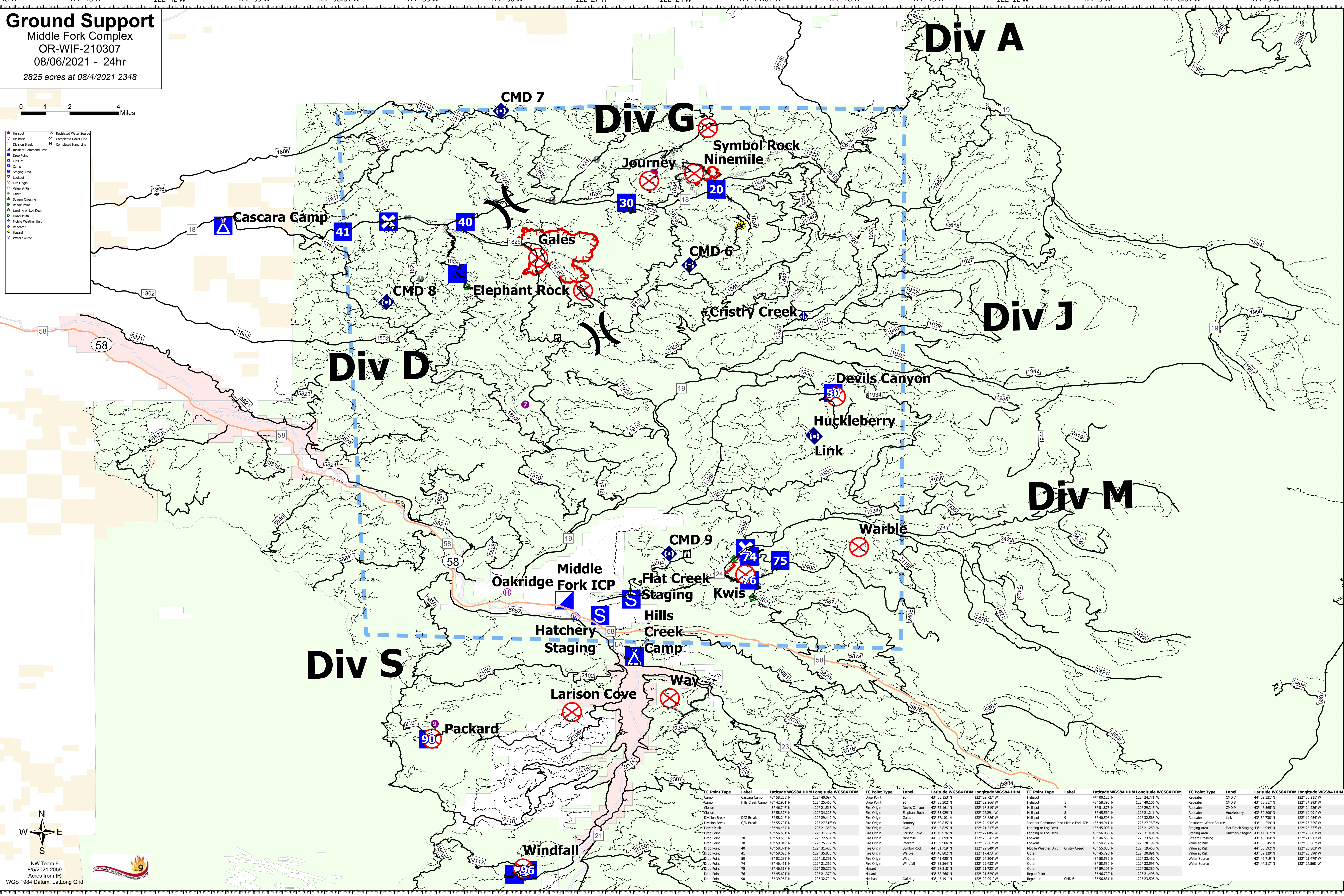


Ground Support
 Middle Fork Complex
 OR-WIF-210307
 08/06/2021 - 24hr
 2825 acres at 08/4/2021 2348



| | | | |
|---|-----------------------|---|-------------------------|
| ● | Helibase | ⓧ | Restricted Water Source |
| ○ | Helibase | ⓧ | Completed Dozer Line |
| — | Division Break | — | Completed Hand Line |
| ⓧ | Incident Command Post | | |
| ● | Drop Point | | |
| ● | Closure | | |
| ● | Camp | | |
| ■ | Staging Area | | |
| ⓧ | Lookout | | |
| ● | Fire Origin | | |
| ● | Value at Risk | | |
| ● | Other | | |
| ● | Stream Crossing | | |
| ● | Repair Point | | |
| ● | Landing or Log Deck | | |
| ● | Dozer Push | | |
| ● | Mobile Weather Unit | | |
| ● | Repeater | | |
| ● | Hazard | | |
| ● | Water Source | | |



NW Team 9
 8/5/2021 2059
 Acres from IR
 WGS 1984 Datum, LatLong Grid

| FC Point Type | Label | Latitude WGS84 DDM | Longitude WGS84 DDM | FC Point Type | Label | Latitude WGS84 DDM | Longitude WGS84 DDM | FC Point Type | Label | Latitude WGS84 DDM | Longitude WGS84 DDM |
|----------------|------------------|--------------------|---------------------|---------------|---------------|--------------------|---------------------|-----------------------|-----------------|--------------------|---------------------|
| Drop Point | 95 | 43° 58.233' N | 122° 40.097' W | Helibase | 1 | 44° 00.126' N | 122° 24.771' W | Repeater | CMD 7 | 44° 02.321' N | 122° 30.211' W |
| Camp | Cascara Camp | 43° 58.233' N | 122° 40.097' W | Helibase | 7 | 43° 58.395' N | 122° 40.106' W | Repeater | CMD 8 | 43° 58.395' N | 122° 34.291' W |
| Camp | Hills Creek Camp | 43° 46.246' N | 122° 21.537' W | Fire Origin | 96 | 43° 35.302' N | 122° 29.366' W | Repeater | CMD 9 | 43° 56.560' N | 122° 34.291' W |
| Closure | 43° 58.378' N | 122° 34.225' W | Fire Origin | 97 | 43° 52.161' N | 122° 18.319' W | Helibase | 7 | 43° 53.875' N | 122° 29.345' W | |
| Division Break | D/G Break | 43° 58.246' N | 122° 29.447' W | Fire Origin | 98 | 43° 57.107' N | 122° 28.886' W | Helibase | 8 | 43° 45.560' N | 122° 21.241' W |
| Dozer Push | 43° 46.457' N | 122° 21.353' W | Fire Origin | 99 | 43° 59.835' N | 122° 24.942' W | Helibase | 9 | 43° 40.508' N | 122° 32.568' W | |
| Drop Point | 20 | 43° 56.531' N | 122° 31.762' W | Fire Origin | 100 | 43° 45.825' N | 122° 21.517' W | Incident Command Post | Middle Fork ICP | 43° 44.911' N | 122° 27.958' W |
| Drop Point | 30 | 43° 59.849' N | 122° 25.737' W | Fire Origin | 101 | 43° 40.926' N | 122° 27.685' W | Landing or Log Deck | 43° 56.086' N | 122° 31.434' W | |
| Drop Point | 40 | 43° 58.371' N | 122° 31.487' W | Fire Origin | 102 | 44° 00.099' N | 122° 23.341' W | Lookout | 43° 46.558' N | 122° 23.590' W | |
| Drop Point | 41 | 43° 58.007' N | 122° 35.835' W | Fire Origin | 103 | 43° 39.986' N | 122° 33.667' W | Lookout | 43° 54.237' N | 122° 28.199' W | |
| Drop Point | 50 | 43° 52.287' N | 122° 18.391' W | Fire Origin | 104 | 44° 01.719' N | 122° 22.849' W | Mobile Weather Unit | Cristy Creek | 43° 55.030' N | 122° 19.450' W |
| Drop Point | 74 | 43° 46.461' N | 122° 21.362' W | Fire Origin | 105 | 43° 46.802' N | 122° 17.473' W | Other | 43° 45.793' N | 122° 20.891' W | |
| Drop Point | 75 | 43° 46.318' N | 122° 20.279' W | Fire Origin | 106 | 43° 41.425' N | 122° 24.204' W | Other | 43° 56.530' N | 122° 31.462' W | |
| Drop Point | 76 | 43° 45.821' N | 122° 21.372' W | Fire Origin | 107 | 43° 35.364' N | 122° 29.433' W | Other | 43° 58.530' N | 122° 33.593' W | |
| Drop Point | 90 | 43° 39.967' N | 122° 32.794' W | Hazard | 43° 58.218' N | 122° 21.723' W | Other | 43° 59.105' N | 122° 30.389' W | | |
| | | | | Helibase | 43° 58.266' N | 122° 21.629' W | Repeater | 43° 46.722' N | 122° 21.498' W | | |
| | | | | | 43° 45.191' N | 122° 29.991' W | Repeater | CMD 6 | 43° 56.831' N | 122° 23.508' W | |