

# Air Ops

Middle Fork Complex  
OR-WIF-210307  
08/06/2021 - 24hr  
2825 acres at 08/4/2021 2348

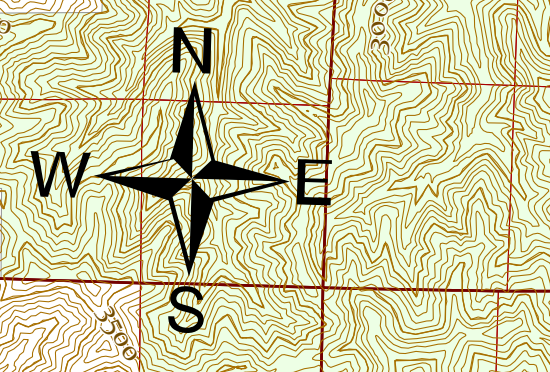


- FS Offices
- Highway
- FS Road
- Arterial
- Collector
- Local
- BPA Transmission Lines
- PLSS Townships
- PLSS Sections
- Open Water - Perennial
- Open Water - Intermittent
- Helispot
- Helibase
- Unimproved Landing Area
- Division Break
- Incident Command Post
- Drop Point
- Closure
- Camp
- Staging Area
- Lookout
- Fire Origin
- Value at Risk

<https://tinyurl.com/2wnyn8t>

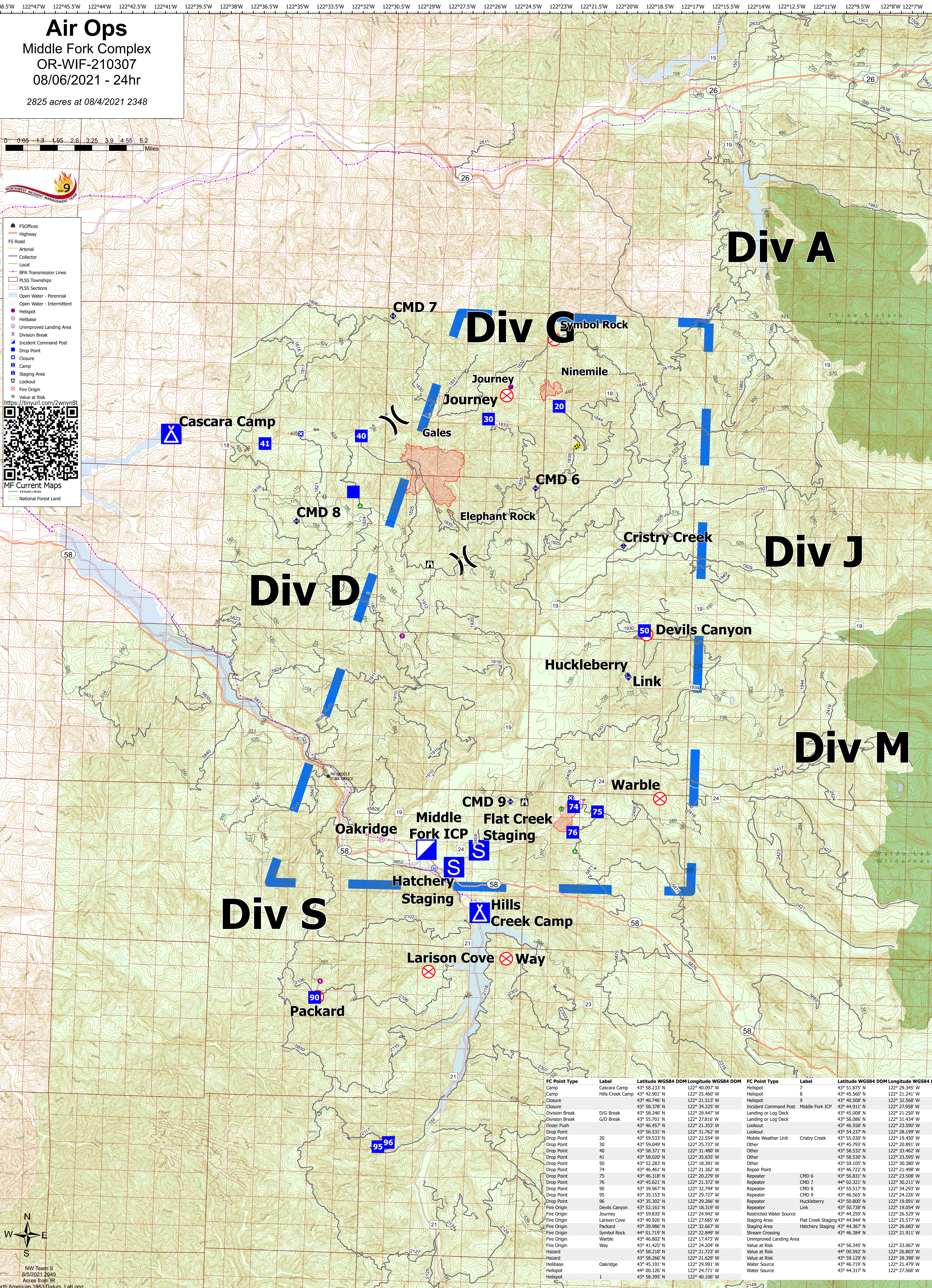
MF Current Maps  
© 2021 WFS

National Forest Land



NW Team 9  
8/5/2021 2049  
Acres from IR  
North American 1983 Datum: Lat/Long

122°48.5'W 122°47'W 122°45.5'W 122°44'W 122°42.5'W 122°41'W 122°39.5'W 122°38'W 122°36.5'W 122°35'W 122°33.5'W 122°32'W 122°30.5'W 122°29'W 122°27.5'W 122°26'W 122°24.5'W 122°23'W 122°21.5'W 122°20'W 122°18.5'W 122°17'W 122°15.5'W 122°14'W 122°12.5'W 122°11'W 122°9.5'W 122°8'W 122°6.5'W 122°5'W



FC Point Type	Label	Latitude WGS84 DDM	Longitude WGS84 DDM	FC Point Type	Label	Latitude WGS84 DDM	Longitude WGS84 DDM
Camp	Cascara Camp	43° 58.233' N	122° 40.097' W	Helispot	7	43° 51.875' N	122° 29.345' W
Camp	Hills Creek Camp	43° 42.901' N	122° 25.460' W	Helispot	8	43° 45.560' N	122° 21.241' W
Closure		43° 46.746' N	122° 21.513' W	Helispot	9	43° 40.508' N	122° 32.568' W
Closure		43° 58.378' N	122° 34.225' W	Incident Command Post	Middle Fork ICP	43° 44.911' N	122° 27.958' W
Closure		43° 58.246' N	122° 29.447' W	Landing or Log Deck		43° 45.008' N	122° 21.250' W
Division Break	D/G Break	43° 55.703' N	122° 21.816' W	Landing or Log Deck		43° 55.066' N	122° 31.434' W
Dozer Push		43° 46.457' N	122° 21.353' W	Lookout		43° 46.558' N	122° 23.590' W
Drop Point		43° 56.531' N	122° 31.762' W	Lookout		43° 54.237' N	122° 28.199' W
Drop Point	20	43° 59.533' N	122° 22.554' W	Mobile Weather Unit	Cristy Creek	43° 55.030' N	122° 19.450' W
Drop Point	30	43° 59.049' N	122° 25.737' W	Other		43° 45.793' N	122° 20.891' W
Drop Point	40	43° 58.371' N	122° 31.480' W	Other		43° 58.532' N	122° 33.462' W
Drop Point	41	43° 58.020' N	122° 35.835' W	Other		43° 58.530' N	122° 33.595' W
Drop Point	50	43° 52.283' N	122° 18.391' W	Other		43° 59.105' N	122° 30.380' W
Drop Point	74	43° 46.461' N	122° 21.362' W	Repair Point		43° 46.722' N	122° 21.498' W
Drop Point	75	43° 46.318' N	122° 20.279' W	Repeater	CMD 6	43° 56.831' N	122° 23.508' W
Drop Point	76	43° 45.621' N	122° 21.372' W	Repeater	CMD 7	44° 02.321' N	122° 30.211' W
Drop Point	90	43° 39.967' N	122° 32.794' W	Repeater	CMD 8	43° 55.517' N	122° 34.293' W
Drop Point	95	43° 35.153' N	122° 29.727' W	Repeater	CMD 9	43° 46.565' N	122° 24.226' W
Drop Point	96	43° 35.302' N	122° 29.266' W	Repeater	Huckleberry Link	43° 50.800' N	122° 19.091' W
Fire Origin	Devils Canyon	43° 52.161' N	122° 18.319' W	Repeater	Link	43° 50.738' N	122° 19.054' W
Fire Origin	Journey	43° 55.835' N	122° 24.942' W	Restricted Water Source		43° 44.259' N	122° 26.529' W
Fire Origin	Larison Cove	43° 40.926' N	122° 27.685' W	Staging Area	Flat Creek Staging	43° 44.944' N	122° 25.577' W
Fire Origin	Packard	43° 39.986' N	122° 32.667' W	Staging Area	Hatchery Staging	43° 44.367' N	122° 26.683' W
Fire Origin	Symbol Rock	44° 01.719' N	122° 22.849' W	Stream Crossing		43° 46.384' N	122° 21.911' W
Fire Origin	Warble	43° 46.802' N	122° 17.473' W	Unimproved Landing Area			
Fire Origin	Way	43° 41.425' N	122° 24.204' W	Value at Risk		43° 56.345' N	122° 33.067' W
Hazard		43° 58.218' N	122° 21.723' W	Value at Risk		44° 00.592' N	122° 26.803' W
Hazard		43° 58.266' N	122° 21.629' W	Value at Risk		43° 59.129' N	122° 28.398' W
Helibase	Oakridge	43° 45.191' N	122° 29.981' W	Water Source		43° 46.719' N	122° 21.479' W
Helispot		44° 00.126' N	122° 24.771' W	Water Source		43° 44.317' N	122° 27.568' W
Helispot	1	43° 58.395' N	122° 40.106' W				