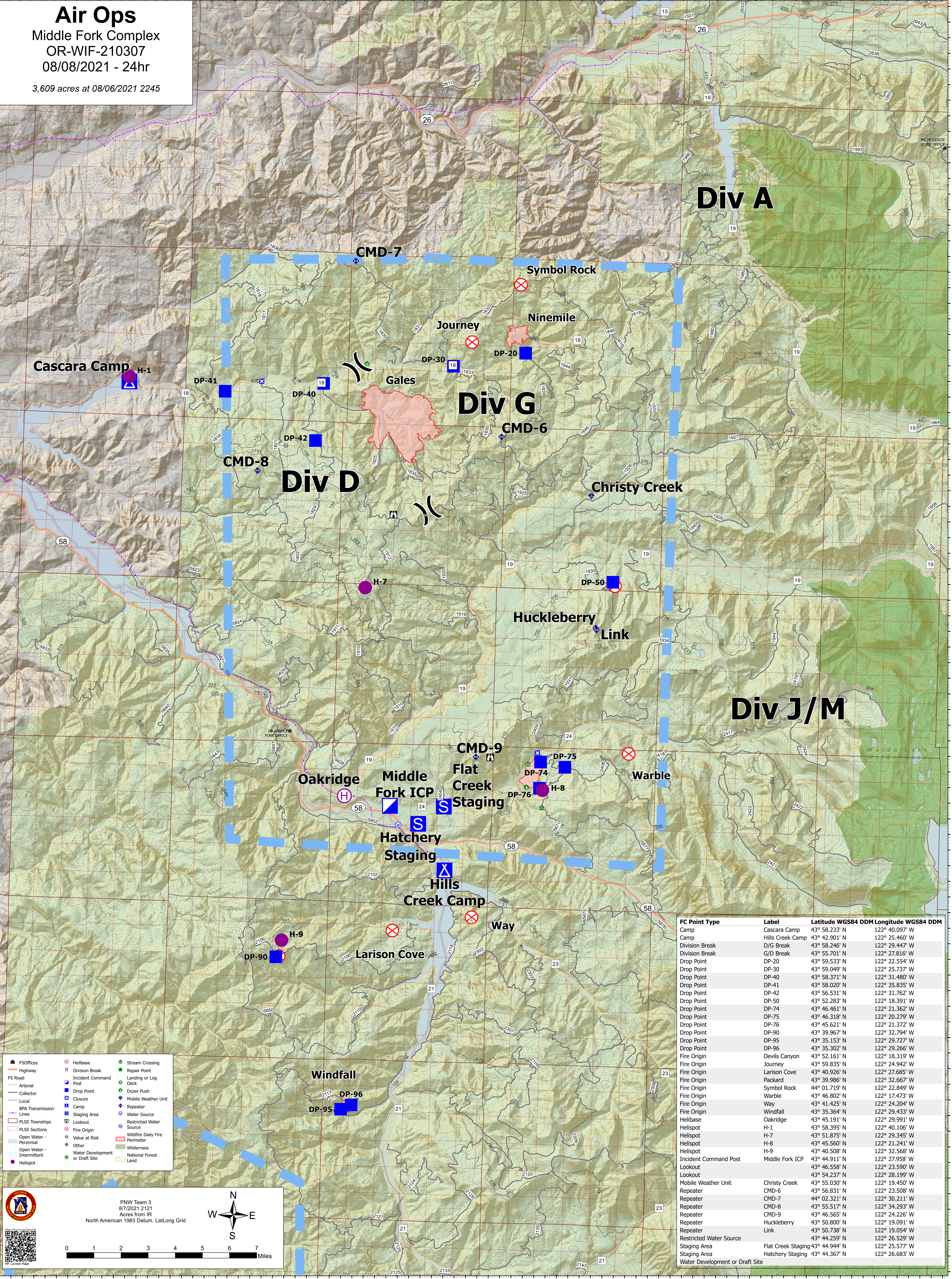
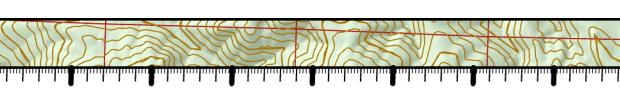


**Air Ops**  
 Middle Fork Complex  
 OR-WIF-210307  
 08/08/2021 - 24hr  
 3,609 acres at 08/06/2021 2245



FS Offices	Heli-base	Stream Crossing
Highway	Division Break	Repair Point
FS Road	Incident Command Post	Landing or Log Deck
Arterial	Drop Point	Dozer Push
Collector	Closure	Mobile Weather Unit
Local	Camp	Repeater
BPA Transmission Lines	Staging Area	Water Source
PLSS Townships	Lookout	Restricted Water Source
PLSS Sections	Fire Origin	Wildfire Daily Fire Perimeter
Open Water - Perennial	Value at Risk	Other
Open Water - Intermittent	Water Development or Draft Site	National Forest Land
Heli-spot		

PNW Team 3  
 8/7/2021 2121  
 Acres from IR  
 North American 1983 Datum, Lat/Long Grid



FC Point Type	Label	Latitude WGS84 DDM	Longitude WGS84 DDM
Camp	Cascara Camp	43° 58.233' N	122° 40.097' W
Camp	Hills Creek Camp	43° 42.901' N	122° 25.460' W
Division Break	D/G Break	43° 58.246' N	122° 29.447' W
Division Break	G/D Break	43° 55.701' N	122° 27.816' W
Drop Point	DP-20	43° 59.533' N	122° 25.554' W
Drop Point	DP-30	43° 59.049' N	122° 25.737' W
Drop Point	DP-40	43° 58.371' N	122° 31.480' W
Drop Point	DP-41	43° 58.020' N	122° 35.835' W
Drop Point	DP-42	43° 56.531' N	122° 31.762' W
Drop Point	DP-50	43° 52.283' N	122° 18.391' W
Drop Point	DP-74	43° 46.461' N	122° 21.362' W
Drop Point	DP-75	43° 46.318' N	122° 20.279' W
Drop Point	DP-76	43° 45.621' N	122° 21.372' W
Drop Point	DP-90	43° 39.967' N	122° 32.794' W
Drop Point	DP-95	43° 35.153' N	122° 29.727' W
Drop Point	DP-96	43° 35.302' N	122° 29.266' W
Fire Origin	Devils Canyon	43° 52.161' N	122° 18.319' W
Fire Origin	Journey	43° 59.835' N	122° 24.942' W
Fire Origin	Larison Cove	43° 40.926' N	122° 27.685' W
Fire Origin	Packard	43° 39.986' N	122° 32.667' W
Fire Origin	Symbol Rock	44° 01.719' N	122° 22.849' W
Fire Origin	Warble	43° 46.802' N	122° 17.473' W
Fire Origin	Way	43° 41.425' N	122° 24.204' W
Fire Origin	Windfall	43° 35.364' N	122° 29.433' W
Heli-base	Oakridge	43° 45.191' N	122° 29.991' W
Heli-spot	H-1	43° 58.395' N	122° 40.106' W
Heli-spot	H-7	43° 51.875' N	122° 29.345' W
Heli-spot	H-8	43° 45.560' N	122° 21.241' W
Heli-spot	H-9	43° 40.508' N	122° 32.568' W
Incident Command Post	Middle Fork ICP	43° 44.911' N	122° 27.958' W
Lookout		43° 46.558' N	122° 23.590' W
Lookout		43° 54.237' N	122° 28.199' W
Mobile Weather Unit	Christy Creek	43° 55.030' N	122° 19.450' W
Repeater	CMD-6	43° 56.831' N	122° 23.508' W
Repeater	CMD-7	44° 02.321' N	122° 30.211' W
Repeater	CMD-8	43° 55.517' N	122° 34.293' W
Repeater	CMD-9	43° 46.565' N	122° 24.226' W
Repeater	Huckleberry	43° 50.800' N	122° 19.091' W
Repeater	Link	43° 50.738' N	122° 19.054' W
Restricted Water Source		43° 44.259' N	122° 26.529' W
Staging Area	Flat Creek Staging	43° 44.944' N	122° 25.577' W
Staging Area	Hatchery Staging	43° 44.367' N	122° 26.683' W
Water Development or Draft Site			