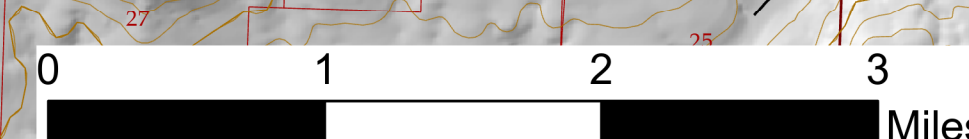




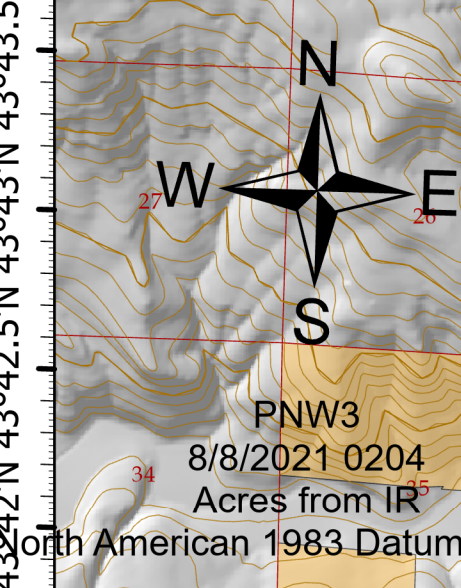
# Operations

Middle Fork Complex  
OR-WIF-210307  
08/08/2021 - 24hr

3,609 acres at 08/06/2021 2245  
Gales - 2,969, Ninemile - 282, Kwis - 358



- SPN Transmission Lines
- PLSS Townships
- PLSS Sections
- Open Water - Perennial
- Open Water - Intermittent
- Helispot
- Division Break
- Incident Command Post
- Drop Point
- Closure
- Camp
- Staging Area
- Lookout
- Fire Origin
- Value at Risk
- Other
- Water Development or Draft Site
- Stream Crossing
- Repair Point
- Landing or Log Deck
- Dozer Push
- Mobile Weather Unit
- Repeater
- Water Source
- Restricted Water Source
- Wilderness
- Highway
- A - ARTERIAL
- C - COLLECTOR
- L - LOCAL
- Other Roads
- Contour\_500ft\_BLM
- Contour\_100ft\_BLM
- CENSUSPlaces
- BLM
- PVT
- USFS
- Helispot
- Helibase
- Division Break
- Incident Command Post
- Drop Point
- Closure
- Camp
- Staging Area
- Lookout
- Fire Origin
- Value at Risk
- Other
- Water Development or Draft Site
- Stream Crossing
- Repair Point
- Landing or Log Deck
- Dozer Push
- Mobile Weather Unit
- Repeater
- Water Source
- Restricted Water Source
- Completed Dozer Line
- Completed Hand Line
- Completed Mixed Construction Line
- Completed Road as Line
- Planned Dozer Line
- Planned Hand Line
- Planned Mixed Construction Line
- Planned Road as Line
- Access or Improved Road
- Retardant Drop
- Temporary Flight Restriction
- Fire Edge
- Contained Line
- Holiday\_Farm\_2020\_Event\_Line
- Completed Dozer Line
- Completed Hand Line
- Access or Improved Road
- Contained Line



FNW3  
8/8/2021 0204  
Acres from IR  
North American 1983 Datum. LatLong

