

# AirOps

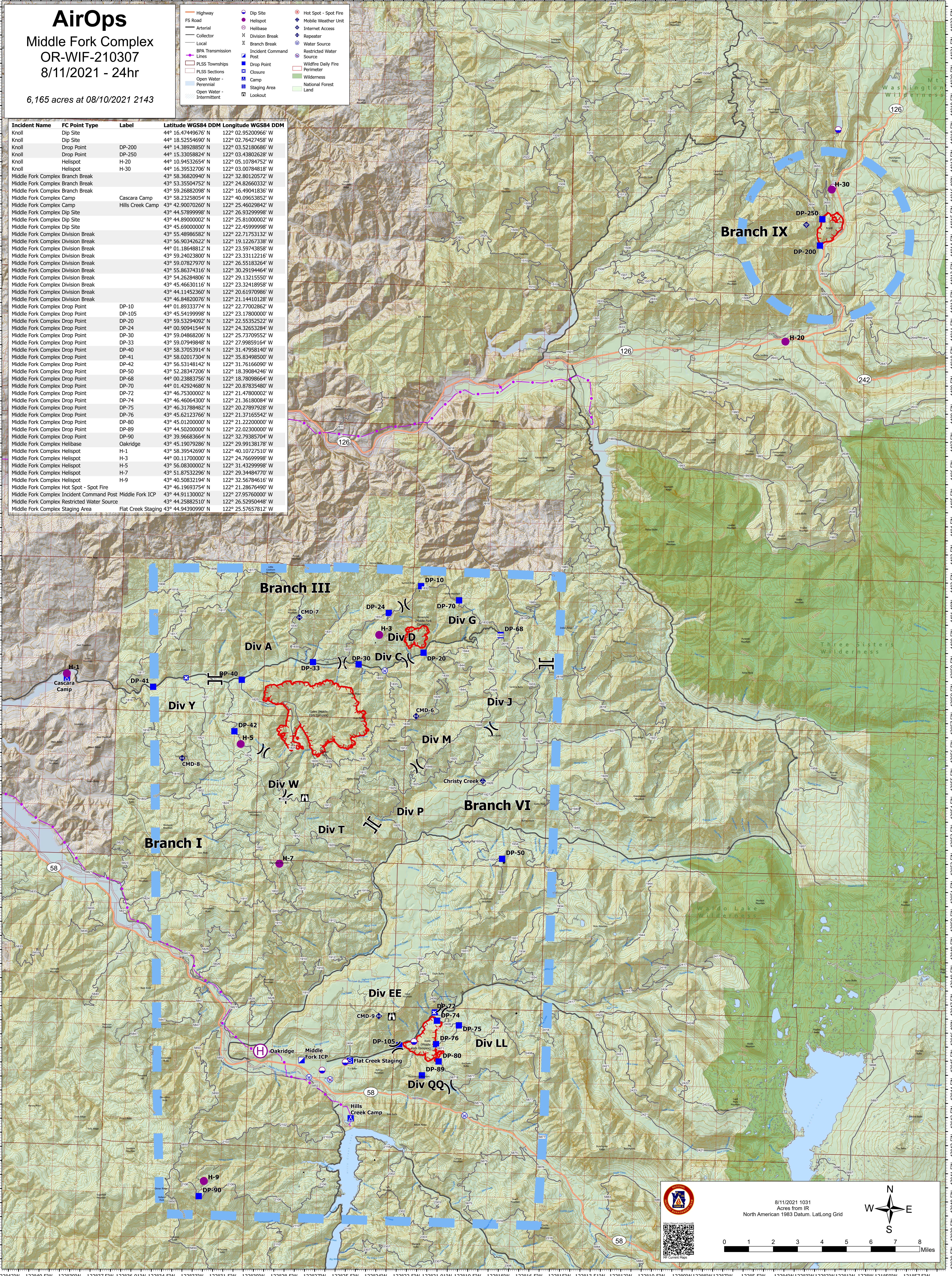
## Middle Fork Complex

### OR-WIF-210307

#### 8/11/2021 - 24hr

6,165 acres at 08/10/2021 2143

Incident Name	FC Point Type	Label	Latitude WGS84 DDM	Longitude WGS84 DDM
Knoll	Dip Site		44° 16.4749676' N	122° 02.95200966' W
Knoll	Dip Site		44° 18.52554690' N	122° 02.76427458' W
Knoll	Drop Point	DP-200	44° 14.38928850' N	122° 03.52180686' W
Knoll	Drop Point	DP-250	44° 15.33058824' N	122° 03.43802628' W
Knoll	Helispot	H-20	44° 10.94532654' N	122° 05.10784752' W
Knoll	Helispot	H-30	44° 16.39532706' N	122° 03.00784818' W
Middle Fork Complex Branch Break			43° 58.36820940' N	122° 32.80120572' W
Middle Fork Complex Branch Break			43° 53.35504752' N	122° 24.82660332' W
Middle Fork Complex Branch Break			43° 59.26882098' N	122° 16.49041836' W
Middle Fork Complex Camp		Cascara Camp	43° 58.23258054' N	122° 40.09653852' W
Middle Fork Complex Camp		Hills Creek Camp	43° 42.90070260' N	122° 25.46029842' W
Middle Fork Complex Dip Site			43° 44.57899998' N	122° 26.93299998' W
Middle Fork Complex Dip Site			43° 44.89000002' N	122° 25.81000002' W
Middle Fork Complex Dip Site			43° 45.69000000' N	122° 22.45999998' W
Middle Fork Complex Division Break			43° 55.48986582' N	122° 22.71753132' W
Middle Fork Complex Division Break			43° 56.90342622' N	122° 19.12267338' W
Middle Fork Complex Division Break			44° 01.18648812' N	122° 23.59743858' W
Middle Fork Complex Division Break			43° 59.24023800' N	122° 23.33112216' W
Middle Fork Complex Division Break			43° 59.07827970' N	122° 26.55183264' W
Middle Fork Complex Division Break			43° 55.86374316' N	122° 30.29194464' W
Middle Fork Complex Division Break			43° 54.26284806' N	122° 29.13215550' W
Middle Fork Complex Division Break			43° 45.46630116' N	122° 23.32418958' W
Middle Fork Complex Division Break			43° 44.11452360' N	122° 20.61970986' W
Middle Fork Complex Division Break			43° 46.84820076' N	122° 21.14410128' W
Middle Fork Complex Drop Point	DP-10		44° 01.89333774' N	122° 22.77002862' W
Middle Fork Complex Drop Point	DP-105		43° 45.54199998' N	122° 23.17800000' W
Middle Fork Complex Drop Point	DP-20		43° 59.53294092' N	122° 22.55352522' W
Middle Fork Complex Drop Point	DP-24		44° 00.90941544' N	122° 24.32653284' W
Middle Fork Complex Drop Point	DP-30		43° 59.04868206' N	122° 25.73709552' W
Middle Fork Complex Drop Point	DP-33		43° 59.07949848' N	122° 27.99859164' W
Middle Fork Complex Drop Point	DP-40		43° 58.37053914' N	122° 31.47958140' W
Middle Fork Complex Drop Point	DP-41		43° 58.02017304' N	122° 35.83498500' W
Middle Fork Complex Drop Point	DP-42		43° 56.53148142' N	122° 31.76166090' W
Middle Fork Complex Drop Point	DP-50		43° 52.28347206' N	122° 18.39084246' W
Middle Fork Complex Drop Point	DP-68		44° 00.23883756' N	122° 18.78098664' W
Middle Fork Complex Drop Point	DP-70		44° 01.42924680' N	122° 20.87835480' W
Middle Fork Complex Drop Point	DP-72		43° 46.75300002' N	122° 21.47800002' W
Middle Fork Complex Drop Point	DP-74		43° 46.46064300' N	122° 21.36180084' W
Middle Fork Complex Drop Point	DP-75		43° 46.31788482' N	122° 20.27897928' W
Middle Fork Complex Drop Point	DP-76		43° 45.62123766' N	122° 21.37165542' W
Middle Fork Complex Drop Point	DP-80		43° 45.01200000' N	122° 21.22200000' W
Middle Fork Complex Drop Point	DP-89		43° 44.50200000' N	122° 22.02300000' W
Middle Fork Complex Drop Point	DP-90		43° 39.96683664' N	122° 32.79385704' W
Middle Fork Complex Helibase		Oakridge	43° 45.19079286' N	122° 29.99138178' W
Middle Fork Complex Helispot	H-1		43° 58.39542690' N	122° 40.10727510' W
Middle Fork Complex Helispot	H-3		44° 00.11700000' N	122° 24.76699998' W
Middle Fork Complex Helispot	H-5		43° 56.08300002' N	122° 31.43299998' W
Middle Fork Complex Helispot	H-7		43° 51.87532296' N	122° 29.34484770' W
Middle Fork Complex Helispot	H-9		43° 40.50832194' N	122° 32.56784616' W
Middle Fork Complex Hot Spot - Spot Fire			43° 46.19693754' N	122° 21.28676490' W
Middle Fork Complex Incident Command Post		Middle Fork ICP	43° 44.91130002' N	122° 27.95760000' W
Middle Fork Complex Restricted Water Source			43° 44.25882510' N	122° 26.52950448' W
Middle Fork Complex Staging Area		Flat Creek Staging	43° 44.94390990' N	122° 25.57657812' W



8/11/2021 1031  
Acres from IR  
North American 1983 Datum, LatLong Grid

