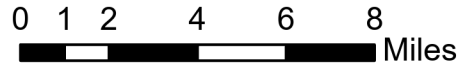


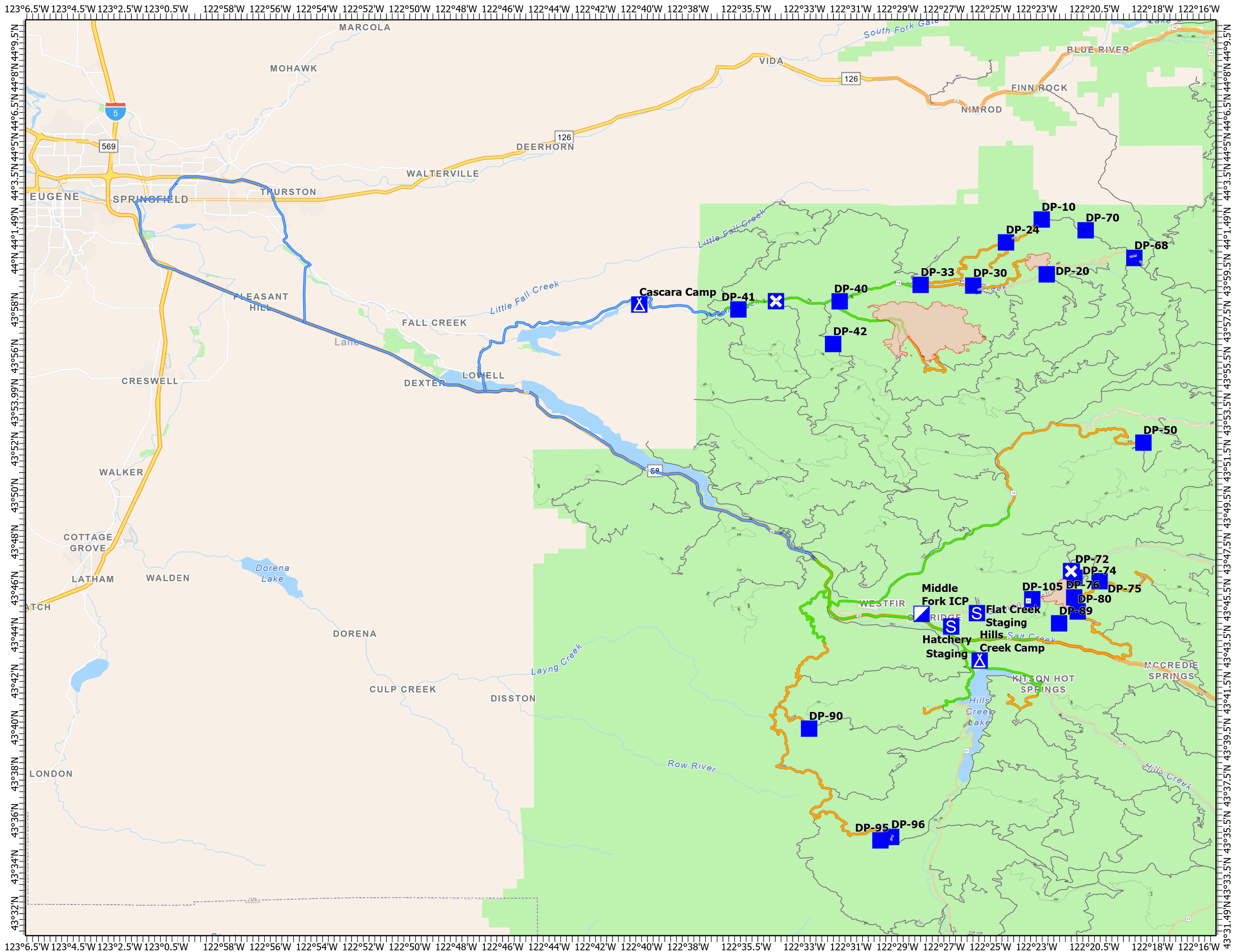
Medical Evac

Middle Fork Complex
OR-WIF-210307
8/11/2021 - 24hr

5,519 acres at 08/09/2021 2110



- Incident Command Post
- Drop Point
- Closure
- Camp
- Staging Area
- Fire Perimeter
- <40 min
- <60 min
- >60 min
- County Boundary
- State
- Arterial
- Collector
- Local
- External



PNW 3
8/10/2021 2234
Acres from IR
WGS 1984 Datum. LatLong Grid