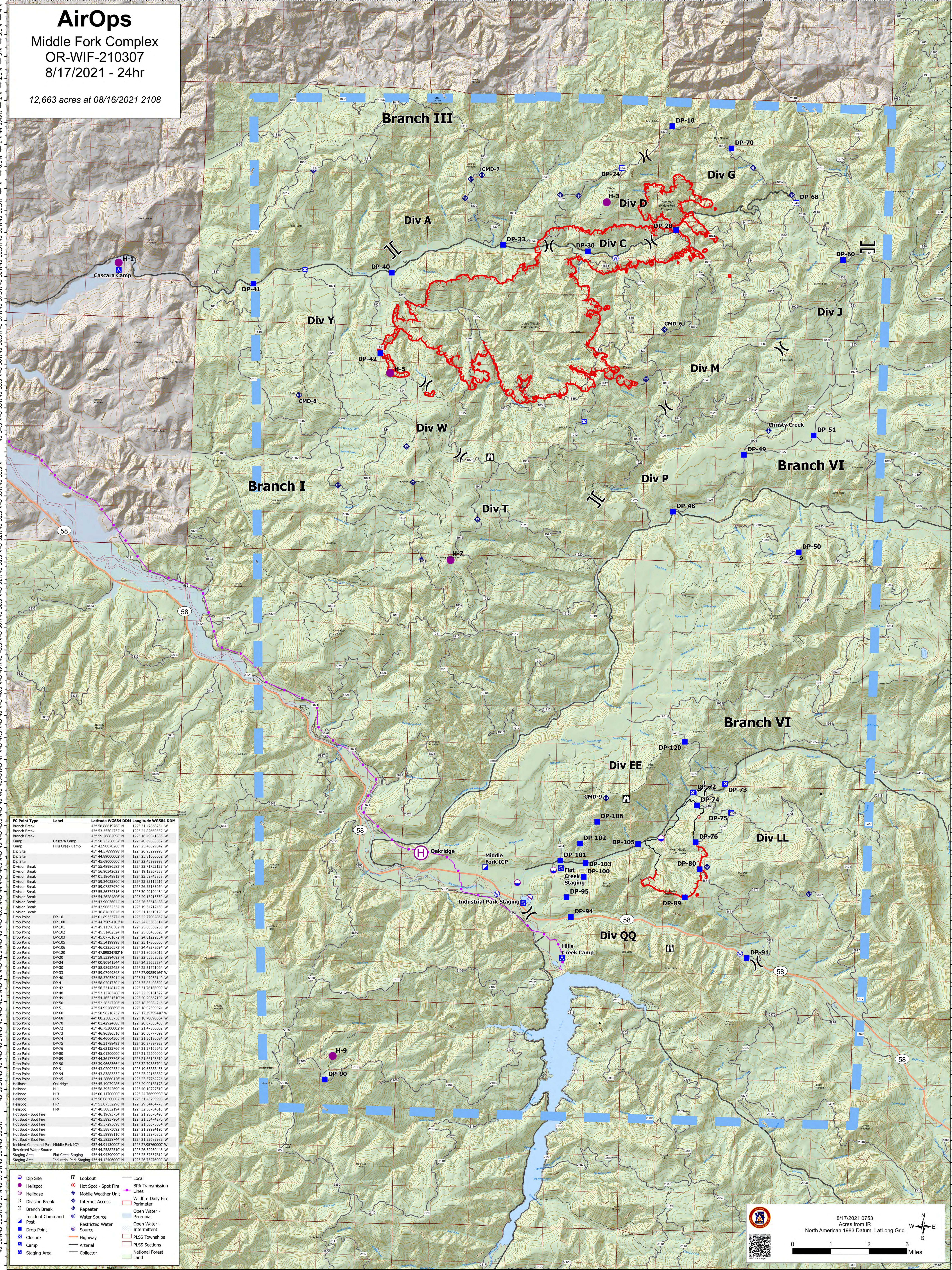


# AirOps

Middle Fork Complex  
OR-WIF-210307  
8/17/2021 - 24hr

12,663 acres at 08/16/2021 2108



FC Point Type	Label	Latitude WGS84 DDM	Longitude WGS84 DDM
Branch Break		43° 58.88619768' N	122° 31.47868254' W
Branch Break		43° 53.3504752' N	122° 24.82600332' W
Branch Break		43° 59.26802908' N	122° 16.46804336' W
Camp	Cascara Camp	43° 58.23258054' N	122° 40.0953852' W
Camp	Hills Creek Camp	43° 42.90070260' N	122° 25.46029842' W
Dip Site		43° 44.89000002' N	122° 25.81000002' W
Dip Site		43° 45.69000000' N	122° 22.45999998' W
Division Break		43° 55.48986582' N	122° 22.71753132' W
Division Break		43° 56.96340222' N	122° 21.12027338' W
Division Break		44° 01.18648812' N	122° 23.59743858' W
Division Break		43° 59.24023800' N	122° 23.33112216' W
Division Break		43° 58.07820796' N	122° 26.55183264' W
Division Break		43° 55.86374316' N	122° 30.29194464' W
Division Break		43° 54.26284806' N	122° 29.13215550' W
Division Break		43° 53.38052048' N	122° 26.32618088' W
Division Break		43° 42.90632334' N	122° 19.34712450' W
Division Break		43° 46.84820076' N	122° 21.14410128' W
Drop Point	DP-10	44° 01.89333774' N	122° 22.77002862' W
Drop Point	DP-100	43° 44.79041102' N	122° 25.60586256' W
Drop Point	DP-101	43° 45.11596302' N	122° 25.60586256' W
Drop Point	DP-102	43° 45.51402324' N	122° 25.60436228' W
Drop Point	DP-103	43° 46.02761072' N	122° 24.81223224' W
Drop Point	DP-105	43° 45.54199998' N	122° 23.17800000' W
Drop Point	DP-106	43° 46.02256572' N	122° 24.48272694' W
Drop Point	DP-120	43° 46.89042902' N	122° 21.80598012' W
Drop Point	DP-20	43° 59.2949092' N	122° 23.52923224' W
Drop Point	DP-24	44° 00.90941544' N	122° 24.32653284' W
Drop Point	DP-30	43° 58.98952458' N	122° 25.31721024' W
Drop Point	DP-33	43° 58.07820796' N	122° 26.55183264' W
Drop Point	DP-40	43° 58.37053914' N	122° 31.47958140' W
Drop Point	DP-41	43° 58.02017304' N	122° 25.83498800' W
Drop Point	DP-42	43° 58.11848142' N	122° 21.76168012' W
Drop Point	DP-48	43° 53.12785488' N	122° 22.39161522' W
Drop Point	DP-49	43° 54.46521510' N	122° 20.20667100' W
Drop Point	DP-50	43° 52.28347206' N	122° 18.39084548' W
Drop Point	DP-51	43° 54.95268694' N	122° 21.59269794' W
Drop Point	DP-60	43° 58.96218732' N	122° 17.25754448' W
Drop Point	DP-68	44° 00.23883756' N	122° 18.78988664' W
Drop Point	DP-70	44° 01.62923194' N	122° 21.86784800' W
Drop Point	DP-72	43° 46.75300002' N	122° 21.47800002' W
Drop Point	DP-73	43° 46.96386516' N	122° 20.50777092' W
Drop Point	DP-74	43° 45.37956000' N	122° 21.38080896' W
Drop Point	DP-75	43° 46.31788482' N	122° 20.27897928' W
Drop Point	DP-76	43° 45.62123766' N	122° 21.37165542' W
Drop Point	DP-80	43° 45.01200000' N	122° 21.22200000' W
Drop Point	DP-89	43° 56.37774768' N	122° 21.66232500' W
Drop Point	DP-90	43° 39.9683664' N	122° 32.79385704' W
Drop Point	DP-91	43° 43.02923234' N	122° 19.65888456' W
Drop Point	DP-94	43° 43.83883332' N	122° 25.32168100' W
Drop Point	DP-95	43° 44.28660126' N	122° 25.37762226' W
Helibase	Oakridge	43° 45.19072886' N	122° 29.99138178' W
Helibase	H-1	43° 58.39542090' N	122° 20.10723210' W
Helibase	H-3	44° 00.11700000' N	122° 24.76699998' W
Helibase	H-5	43° 56.08300002' N	122° 31.43299998' W
Helibase	H-7	43° 51.87532296' N	122° 29.34484770' W
Helibase	H-9	43° 46.50832194' N	122° 21.56784800' W
Hot Spot - Spot Fire		43° 46.19693754' N	122° 21.28676400' W
Hot Spot - Spot Fire		43° 45.59979116' N	122° 21.32970652' W
Hot Spot - Spot Fire		43° 45.58338744' N	122° 21.32683802' W
Hot Spot - Spot Fire		43° 45.58873092' N	122° 21.29924196' W
Hot Spot - Spot Fire		43° 45.59979116' N	122° 21.32970652' W
Hot Spot - Spot Fire		43° 45.58338744' N	122° 21.32683802' W
Incident Command Post Middle Fork ICP		43° 44.91130002' N	122° 27.95760000' W
Restricted Water Source		43° 44.25882510' N	122° 25.52950448' W
Staging Area	Flat Creek Staging	43° 44.94390990' N	122° 25.57678172' W
Staging Area	Industrial Park Staging	43° 44.12460200' N	122° 26.79276000' W

- Dip Site
- Helibase
- Helibase
- Division Break
- Branch Break
- Incident Command
- Post
- Drop Point
- Closure
- Camp
- Staging Area
- Lookout
- Hot Spot - Spot Fire
- Mobile Weather Unit
- Internet Access
- Repeater
- Water Source
- Restricted Water Source
- Highway
- Arterial
- Collector
- Local
- BPA Transmission Lines
- Wildfire Daily Fire Perimeter
- Open Water - Perennial
- Open Water - Intermittent
- PLSS Townships
- PLSS Sections
- National Forest Land

8/17/2021 0753  
Acres from IR  
North American 1983 Datum, LatLong Grid