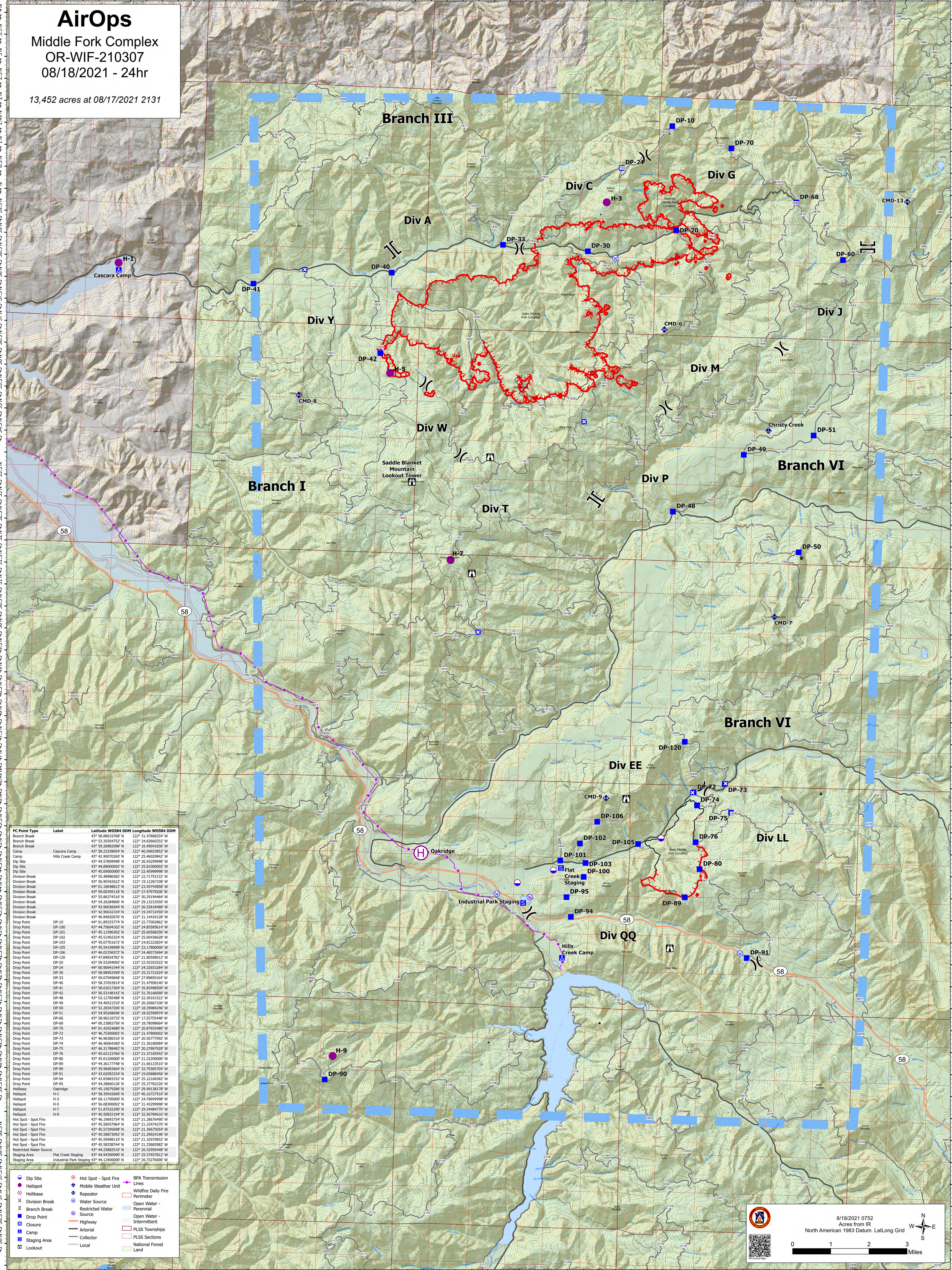


AirOps

Middle Fork Complex
OR-WIF-210307
08/18/2021 - 24hr

13,452 acres at 08/17/2021 2131



FC Point Type	Label	Latitude WGS84 DDM	Longitude WGS84 DDM
Branch Break		43° 53.35504752' N	122° 24.82660332' W
Branch Break		43° 59.26882098' N	122° 16.49041836' W
Camp	Cascara Camp	43° 42.90070260' N	122° 25.46029842' W
Dip Site		43° 44.57899988' N	122° 26.93299988' W
Dip Site		43° 44.99000002' N	122° 25.81000002' W
Dip Site		43° 45.66000000' N	122° 22.45099998' W
Division Break		43° 55.48986582' N	122° 22.71753132' W
Division Break		43° 55.90342622' N	122° 19.12267338' W
Division Break		44° 01.18048812' N	122° 25.59183868' W
Division Break		43° 59.00395116' N	122° 27.47979228' W
Division Break		43° 55.86374316' N	122° 30.29194464' W
Division Break		43° 54.26289696' N	122° 29.13215250' W
Division Break		43° 43.90036044' N	122° 26.53618488' W
Division Break		43° 42.90632334' N	122° 19.34712450' W
Drop Point	DP-10	44° 01.89333774' N	122° 22.77020862' W
Drop Point	DP-100	43° 44.75694102' N	122° 24.85585614' W
Drop Point	DP-101	43° 45.11596302' N	122° 25.60568256' W
Drop Point	DP-102	43° 45.44022124' N	122° 25.00568256' W
Drop Point	DP-103	43° 45.07161672' N	122° 24.81222834' W
Drop Point	DP-105	43° 45.54199988' N	122° 23.17800000' W
Drop Point	DP-106	43° 46.02505776' N	122° 24.80277598' W
Drop Point	DP-120	43° 47.89634782' N	122° 21.80580812' W
Drop Point	DP-20	43° 59.53294092' N	122° 22.55352522' W
Drop Point	DP-24	44° 00.90941544' N	122° 26.32632884' W
Drop Point	DP-30	43° 58.98924588' N	122° 25.31731024' W
Drop Point	DP-33	43° 59.07949848' N	122° 27.9989164' W
Drop Point	DP-40	43° 58.37053914' N	122° 31.47958140' W
Drop Point	DP-41	43° 58.02017394' N	122° 28.62048856' W
Drop Point	DP-42	43° 56.53148142' N	122° 31.76166900' W
Drop Point	DP-48	43° 53.12785488' N	122° 22.39161522' W
Drop Point	DP-49	43° 46.46521510' N	122° 20.20667100' W
Drop Point	DP-50	43° 52.38937000' N	122° 26.80849460' W
Drop Point	DP-51	43° 54.95268696' N	122° 18.02599974' W
Drop Point	DP-60	43° 58.96218732' N	122° 17.25755448' W
Drop Point	DP-68	44° 00.23883756' N	122° 16.70968456' W
Drop Point	DP-70	44° 01.42924680' N	122° 20.87835480' W
Drop Point	DP-72	43° 46.75300002' N	122° 21.47800002' W
Drop Point	DP-73	43° 46.32651616' N	122° 20.30277398' W
Drop Point	DP-74	43° 46.46064300' N	122° 21.36180894' W
Drop Point	DP-75	43° 46.31788482' N	122° 20.27897928' W
Drop Point	DP-76	43° 45.62123766' N	122° 21.37185942' W
Drop Point	DP-80	43° 45.20000000' N	122° 21.22000000' W
Drop Point	DP-89	43° 44.36177748' N	122° 21.6612310' W
Drop Point	DP-90	43° 39.9683664' N	122° 22.79385704' W
Drop Point	DP-91	43° 51.82732296' N	122° 26.34948770' W
Drop Point	DP-94	43° 43.8888332' N	122° 25.22168382' W
Drop Point	DP-95	43° 44.28661126' N	122° 25.37762226' W
Hot Spot - Spot Fire	Oakridge	43° 45.19279266' N	122° 29.99138178' W
Hot Spot - Spot Fire	H-1	43° 58.39542690' N	122° 40.10727510' W
Hot Spot - Spot Fire	H-3	44° 00.11700000' N	122° 24.76699998' W
Hot Spot - Spot Fire	H-5	43° 56.08300002' N	122° 31.43299998' W
Hot Spot - Spot Fire	H-7	43° 51.82732296' N	122° 26.34948770' W
Hot Spot - Spot Fire	H-9	43° 40.50832194' N	122° 32.56784616' W
Hot Spot - Spot Fire		43° 46.19693754' N	122° 21.28676490' W
Hot Spot - Spot Fire		43° 45.57295698' N	122° 21.30675054' W
Hot Spot - Spot Fire		43° 45.58873092' N	122° 21.29924196' W
Hot Spot - Spot Fire		43° 45.59998110' N	122° 21.32978532' W
Hot Spot - Spot Fire		43° 45.5838744' N	122° 21.33683982' W
Restricted Water Source		43° 44.25882510' N	122° 26.52950448' W
Staging Area	Flat Creek Staging	43° 44.94309999' N	122° 25.57678112' W
Staging Area	Industrial Park Staging	43° 44.12460000' N	122° 26.75276000' W

- Dip Site
- Hot Spot - Spot Fire
- BPA Transmission Lines
- Mobile Weather Unit
- Wildfire Daily Fire
- Repeater
- Water Source
- Open Water - Perennial
- Restricted Water
- Open Water - Intermittent
- Source
- Highway
- Arterial
- PLSS Townships
- PLSS Sections
- National Forest Land
- Division Break
- Branch Break
- Drop Point
- Closure
- Camp
- Staging Area
- Lookout

8/18/2021 0752
Acres from IR

North American 1983 Datum, LatLong Grid