

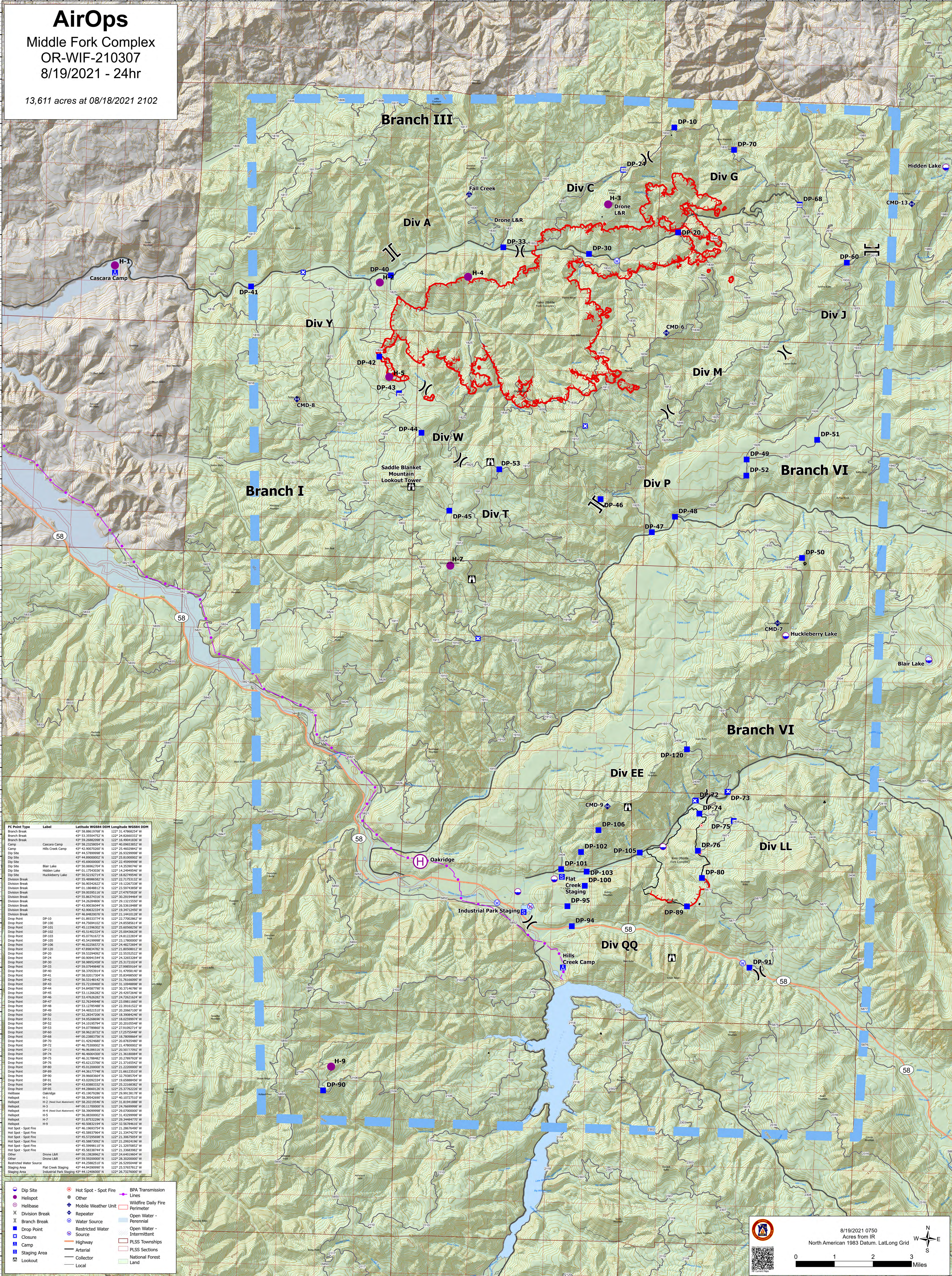
AirOps

Middle Fork Complex

OR-WIF-210307

8/19/2021 - 24hr

13,611 acres at 08/18/2021 2102



FC Point Type	Label	Latitude WGS84 DDM	Longitude WGS84 DDM
Branch Break		43° 58.8803510' N	122° 31.4788252' W
Branch Break		43° 58.2550242' N	122° 24.2660212' W
Branch Break		43° 59.2682209' N	122° 16.4904183' W
Camp	Cascara Camp	43° 58.2228294' N	122° 40.6662852' W
Camp	Hills Creek Camp	43° 42.9007050' N	122° 25.4602842' W
Dip Site		43° 44.8900002' N	122° 25.8500000' W
Dip Site		43° 45.6000000' N	122° 22.4999998' W
Dip Site	Blair Lake	43° 50.0602200' N	122° 14.3230274' W
Dip Site	Hidden Lake	44° 01.1754333' N	122° 14.2494546' W
Dip Site	Huckleberry Lake	43° 50.5218222' N	122° 18.0228548' W
Division Break		43° 53.5896882' N	122° 22.7175132' W
Division Break		43° 56.9032622' N	122° 19.1226733' W
Division Break		44° 01.1646818' N	122° 23.0347488' W
Division Break		43° 59.0839511' N	122° 27.4797592' W
Division Break		43° 55.8637431' N	122° 30.2019488' W
Division Break		43° 54.2638802' N	122° 29.2115500' W
Division Break		43° 43.9003044' N	122° 26.5361888' W
Division Break		43° 42.8263234' N	122° 19.8471248' W
Division Break		43° 46.8482078' N	122° 21.1441012' W
Drop Point	DP-10	44° 01.8333274' N	122° 22.7700082' W
Drop Point	DP-100	44° 01.2569412' N	122° 24.6585514' W
Drop Point	DP-101	43° 45.1159632' N	122° 25.6058256' W
Drop Point	DP-102	43° 45.1402238' N	122° 25.6058256' W
Drop Point	DP-103	43° 45.0776162' N	122° 24.8122284' W
Drop Point	DP-106	43° 45.2419988' N	122° 23.7800000' W
Drop Point	DP-109	43° 46.2226272' N	122° 24.8122284' W
Drop Point	DP-120	43° 58.8265282' N	122° 21.8058802' W
Drop Point	DP-20	43° 58.3294802' N	122° 22.8215232' W
Drop Point	DP-24	44° 00.3094154' N	122° 24.1265328' W
Drop Point	DP-26	43° 58.3698588' N	122° 25.2121242' W
Drop Point	DP-33	43° 59.0799848' N	122° 27.9969544' W
Drop Point	DP-40	43° 58.2705314' N	122° 31.4788252' W
Drop Point	DP-41	43° 58.1823204' N	122° 31.4788252' W
Drop Point	DP-42	43° 56.5314842' N	122° 31.7616098' W
Drop Point	DP-43	43° 55.2210960' N	122° 31.1084888' W
Drop Point	DP-44	43° 54.6682874' N	122° 30.2115500' W
Drop Point	DP-45	43° 53.1126628' N	122° 29.4297246' W
Drop Point	DP-46	43° 53.4808848' N	122° 24.2660212' W
Drop Point	DP-47	43° 52.7634948' N	122° 23.0981166' W
Drop Point	DP-48	43° 53.1278988' N	122° 22.2018558' W
Drop Point	DP-49	43° 54.8602878' N	122° 20.1955548' W
Drop Point	DP-50	43° 52.8472306' N	122° 18.2698426' W
Drop Point	DP-51	43° 54.8268898' N	122° 18.0228548' W
Drop Point	DP-52	43° 54.1919574' N	122° 20.2018558' W
Drop Point	DP-53	43° 54.0778988' N	122° 27.0192214' W
Drop Point	DP-60	44° 01.0218822' N	122° 20.7832488' W
Drop Point	DP-68	44° 02.2388376' N	122° 18.2698426' W
Drop Point	DP-70	44° 01.0218822' N	122° 20.7832488' W
Drop Point	DP-72	43° 46.7530002' N	122° 21.4788002' W
Drop Point	DP-74	43° 46.3638618' N	122° 20.3077702' W
Drop Point	DP-76	43° 46.4604802' N	122° 21.3618094' W
Drop Point	DP-78	43° 46.3178842' N	122° 20.2178928' W
Drop Point	DP-79	43° 45.1237662' N	122° 21.3618094' W
Drop Point	DP-80	43° 45.0120000' N	122° 21.2220000' W
Drop Point	DP-88	43° 44.3617748' N	122° 21.8612510' W
Drop Point	DP-89	43° 43.9468284' N	122° 21.3618094' W
Drop Point	DP-91	43° 43.0292234' N	122° 19.6588846' W
Drop Point	DP-95	43° 43.8883324' N	122° 21.1661658' W
Drop Point	DP-99	43° 44.2866126' N	122° 25.3772226' W
Helibase	Oakridge	43° 45.1007988' N	122° 29.9913818' W
Helibase	H-1	43° 58.2550242' N	122° 40.6662852' W
Helibase	H-2 (Lead Dual Assessment)	43° 58.2021954' N	122° 31.9141888' W
Helibase	H-3	44° 01.1754333' N	122° 14.2494546' W
Helibase	H-4 (Lead Dual Assessment)	43° 58.3909988' N	122° 29.0700000' W
Helibase	H-5	43° 56.3000212' N	122° 31.4229988' W
Helibase	H-7	43° 51.8732296' N	122° 28.9448898' W
Helibase	H-9	43° 40.5083234' N	122° 32.5678460' W
Hot Spot - Spot Fire		43° 46.1693284' N	122° 21.2867000' W
Hot Spot - Spot Fire		43° 45.5893764' N	122° 21.3344270' W
Hot Spot - Spot Fire		43° 45.2729588' N	122° 21.3097504' W
Hot Spot - Spot Fire		43° 45.7882802' N	122° 21.2969418' W
Hot Spot - Spot Fire		43° 45.5999818' N	122° 21.3297832' W
Hot Spot - Spot Fire		43° 45.5833744' N	122° 21.3068802' W
Other	Drone L&R	44° 00.1382862' N	122° 24.4401904' W
Other	Drone L&R	43° 59.2000000' N	122° 28.2020000' W
Restricted Water Source		43° 44.2268218' N	122° 26.2509448' W
Staging Area	Flat Creek Staging	43° 44.9430998' N	122° 25.5757812' W
Staging Area	Industrial Park Staging	43° 44.1246000' N	122° 26.7327000' W

- Dip Site
- Helibase
- Helibase
- Division Break
- Branch Break
- Drop Point
- Closure
- Camp
- Staging Area
- Lookout
- Hot Spot - Spot Fire
- Other
- Mobile Weather Unit
- Repeater
- Water Source
- Restricted Water Source
- BPA Transmission Lines
- Wildfire Daily Fire
- Open Water - Perennial
- Open Water - Intermittent
- PLSS Townships
- PLSS Sections
- National Forest Land
- Local

8/19/2021 0750
Acres from IR
North American 1983 Datum, LatLong Grid