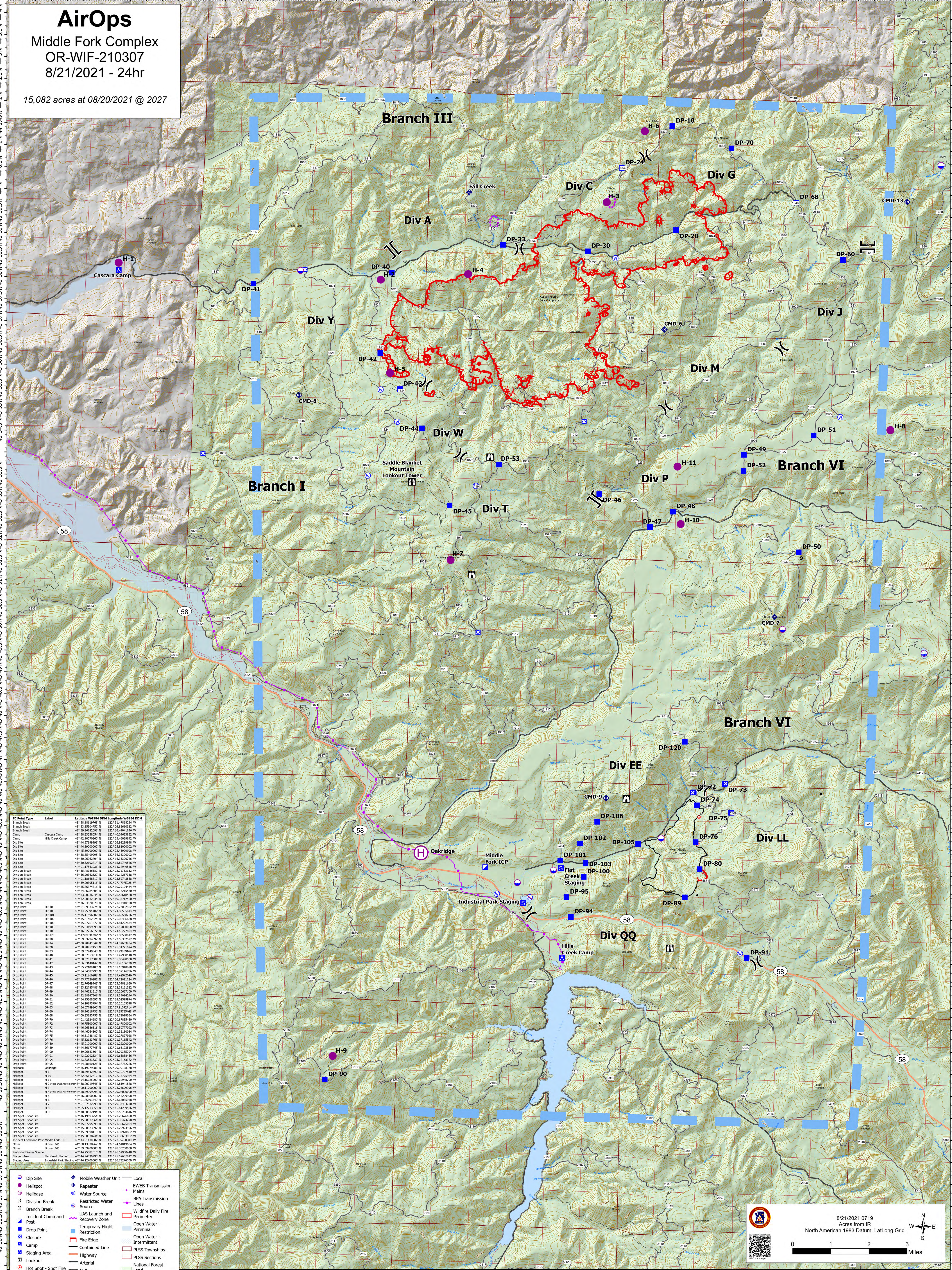


AirOps

Middle Fork Complex
OR-WIF-210307
8/21/2021 - 24hr

15,082 acres at 08/20/2021 @ 2027



FC Point Type	Label	Latitude WGS84 DDM	Longitude WGS84 DDM
Branch Break		43° 53.3550472° N	122° 24.8566332° W
Branch Break		43° 53.2885258° N	122° 18.4094183° W
Camp	Cascara Camp	43° 42.9007267° N	122° 25.4602942° W
Dip Site		43° 44.7199998° N	122° 25.8029998° W
Dip Site		43° 44.8990002° N	122° 25.8000002° W
Dip Site		43° 55.8999998° N	122° 22.4999998° W
Dip Site		43° 58.3599998° N	122° 34.3800002° W
Dip Site		43° 50.5999998° N	122° 18.2000002° W
Dip Site		43° 50.5219271° N	122° 18.8274958° W
Dip Site		44° 01.1754338° N	122° 18.2494958° W
Division Break		43° 53.8999998° N	122° 22.7200002° W
Division Break		43° 56.9034262° N	122° 19.1224738° W
Division Break		43° 01.8848812° N	122° 25.8029998° W
Division Break		43° 59.8039118° N	122° 27.4797998° W
Division Break		43° 55.8039118° N	122° 30.2999998° W
Division Break		43° 54.8268488° N	122° 29.1811558° W
Division Break		43° 43.8008488° N	122° 25.3808488° W
Division Break		43° 42.9007267° N	122° 19.2471267° W
Drop Point	DP-10	43° 46.8482078° N	122° 21.2441023° W
Drop Point	DP-100	43° 02.8933778° N	122° 22.7200002° W
Drop Point	DP-102	43° 44.7596402° N	122° 24.8048514° W
Drop Point	DP-103	43° 45.5140234° N	122° 25.0043628° W
Drop Point	DP-105	43° 45.0774817° N	122° 24.8322347° W
Drop Point	DP-106	43° 45.5419998° N	122° 23.1780000° W
Drop Point	DP-108	43° 46.8226572° N	122° 24.8627888° W
Drop Point	DP-120	43° 42.9007267° N	122° 21.8000002° W
Drop Point	DP-20	43° 59.3294982° N	122° 22.5528252° W
Drop Point	DP-24	43° 02.8999548° N	122° 24.2653284° W
Drop Point	DP-30	43° 58.9892488° N	122° 25.3172102° W
Drop Point	DP-33	43° 50.2794982° N	122° 21.8999998° W
Drop Point	DP-40	43° 58.3703914° N	122° 31.4799814° W
Drop Point	DP-41	43° 58.3203258° N	122° 25.8488998° W
Drop Point	DP-42	43° 56.5314814° N	122° 31.7616698° W
Drop Point	DP-43	43° 55.2208488° N	122° 31.1094888° W
Drop Point	DP-44	43° 54.8268488° N	122° 30.2999998° W
Drop Point	DP-45	43° 53.1126828° N	122° 29.4297998° W
Drop Point	DP-46	43° 53.4762828° N	122° 28.7099888° W
Drop Point	DP-47	43° 52.7639948° N	122° 23.0881668° W
Drop Point	DP-48	43° 53.1786888° N	122° 22.2681668° W
Drop Point	DP-49	43° 54.4652118° N	122° 28.2896718° W
Drop Point	DP-50	43° 53.2999998° N	122° 18.2000002° W
Drop Point	DP-51	43° 54.9268698° N	122° 18.0259998° W
Drop Point	DP-52	43° 54.0195794° N	122° 20.2010558° W
Drop Point	DP-53	43° 54.0778888° N	122° 22.6099274° W
Drop Point	DP-60	43° 58.9628732° N	122° 17.2575848° W
Drop Point	DP-68	43° 00.2885732° N	122° 18.7099888° W
Drop Point	DP-70	44° 01.4292488° N	122° 20.8783588° W
Drop Point	DP-72	43° 46.8638618° N	122° 21.8638618° W
Drop Point	DP-73	43° 46.8638618° N	122° 20.5877292° W
Drop Point	DP-74	43° 46.8638618° N	122° 21.8638618° W
Drop Point	DP-75	43° 46.3178482° N	122° 20.2789702° W
Drop Point	DP-76	43° 45.6212268° N	122° 21.2716542° W
Drop Point	DP-80	43° 45.0230002° N	122° 21.2200002° W
Drop Point	DP-89	43° 44.3617748° N	122° 21.6612312° W
Drop Point	DP-90	43° 30.6668668° N	122° 21.6612312° W
Drop Point	DP-91	43° 43.0292334° N	122° 19.6588888° W
Drop Point	DP-94	43° 43.2885258° N	122° 25.2148782° W
Drop Point	DP-95	43° 44.3866128° N	122° 25.3776238° W
Helispot	Oakridge	43° 45.1977888° N	122° 29.7813918° W
Helispot	H-10	43° 52.8112612° N	122° 22.1799574° W
Helispot	H-11	43° 54.1320202° N	122° 22.4649598° W
Helispot	H-1	43° 58.2019548° N	122° 31.8141888° W
Helispot	H-2 (Newt Dust Mountain)	43° 58.3999998° N	122° 29.0700000° W
Helispot	H-3	43° 50.8000002° N	122° 21.4299998° W
Helispot	H-4	44° 01.7589342° N	122° 23.6289848° W
Helispot	H-5	43° 53.8752288° N	122° 26.3488778° W
Helispot	H-6	43° 55.1221288° N	122° 25.4629888° W
Helispot	H-7	43° 40.5882194° N	122° 32.5679462° W
Helispot	H-8	43° 46.1893794° N	122° 21.2681668° W
Hot Spot - Spot Fire		43° 45.5893794° N	122° 21.3447278° W
Hot Spot - Spot Fire		43° 46.1893794° N	122° 21.2681668° W
Hot Spot - Spot Fire		43° 45.5893794° N	122° 21.3447278° W
Hot Spot - Spot Fire		43° 45.5893794° N	122° 21.3447278° W
Hot Spot - Spot Fire		43° 45.5893794° N	122° 21.3447278° W
Hot Spot - Spot Fire		43° 45.5893794° N	122° 21.3447278° W
Incident Command Post	Middle Fork ICP	43° 44.1130002° N	122° 27.9270000° W
Other	Drone LAIR	43° 00.1885258° N	122° 24.8000000° W
Other		43° 59.9200000° N	122° 28.3000000° W
Restricted Water Source		43° 44.2300000° N	122° 25.5768712° W
Staging Area	Flat Creek Staging	43° 44.9499998° N	122° 25.5768712° W
Staging Area	Industrial Park Staging	43° 44.1340000° N	122° 26.7190000° W

Legend

- Dip Site
- Helispot
- Helibase
- Division Break
- Branch Break
- Incident Command Post
- Drop Point
- Closure
- Camp
- Staging Area
- Lookout
- Hot Spot - Spot Fire
- Mobile Weather Unit
- Repeater
- Water Source
- Restricted Water Source
- UAS Launch and Recovery Zone
- Temporary Flight Restriction
- Fire Edge
- Contained Line
- Highway
- Arterial
- Collector
- Local
- EWEB Transmission Mains
- BPA Transmission Lines
- Wildfire Daily Fire Perimeter
- Open Water - Perennial
- Open Water - Intermittent
- PLSS Townships
- PLSS Sections
- National Forest
- Land

8/21/2021 0719
Acres from IR
North American 1983 Datum, LatLong Grid

0 1 2 3 Miles