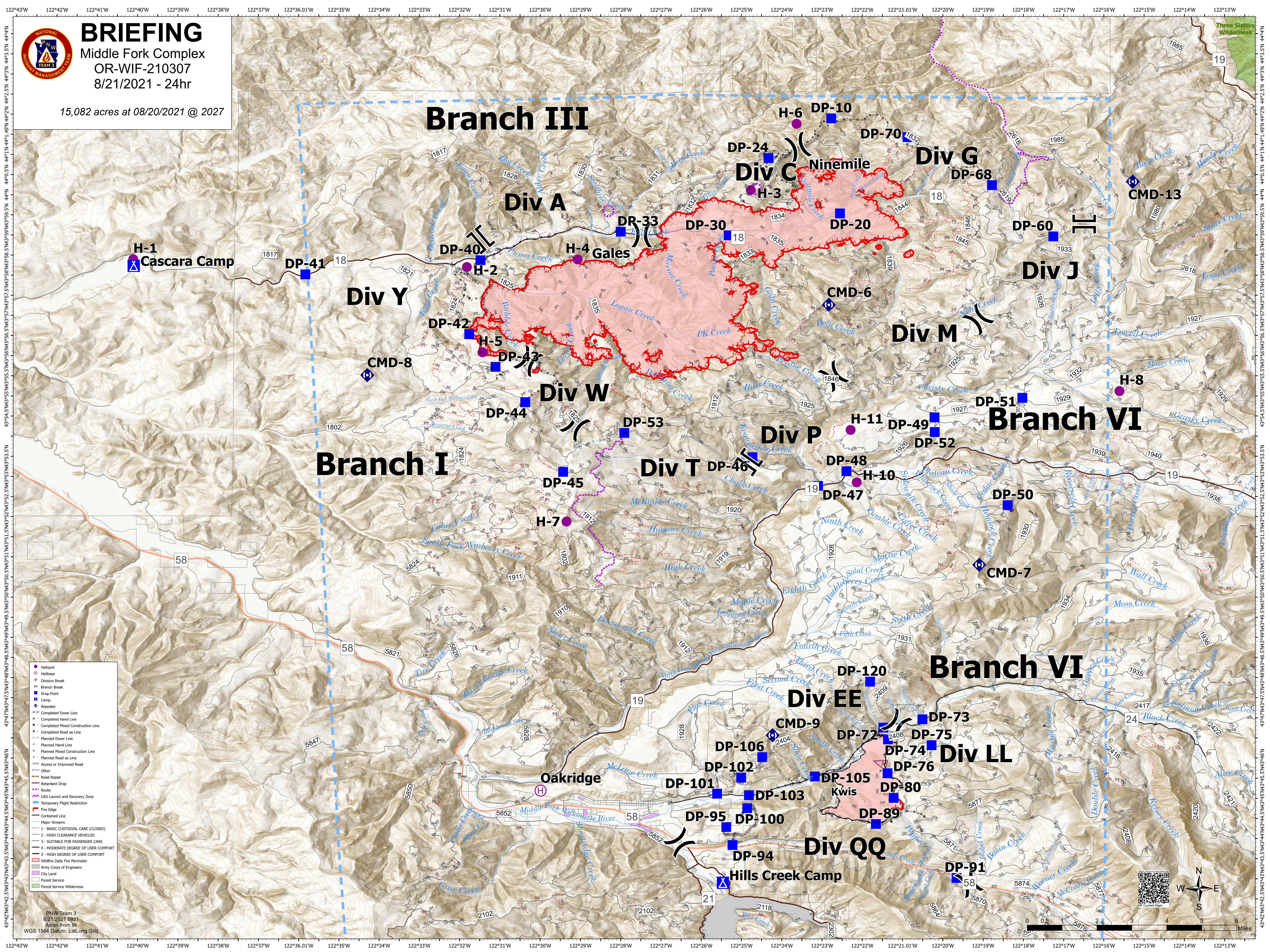




BRIEFING

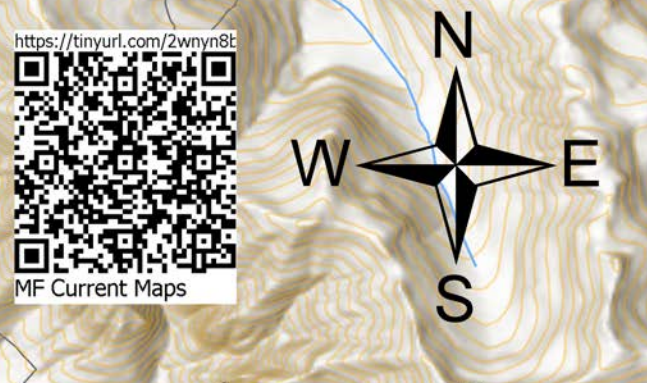
Middle Fork Complex
OR-WIF-210307
8/21/2021 - 24hr

15,082 acres at 08/20/2021 @ 2027



- Helispot
- Helibase
- ⚡ Division Break
- ⚡ Branch Break
- Drop Point
- ⬠ Camp
- ⬠ Repeater
- ⚡ Completed Dozer Line
- ⚡ Completed Hand Line
- ⚡ Completed Mixed Construction Line
- ⚡ Planned Dozer as Line
- ⚡ Planned Dozer Line
- ⚡ Planned Hand Line
- ⚡ Planned Mixed Construction Line
- ⚡ Planned Road as Line
- ⚡ Access or Improved Road
- ⚡ Other
- ⚡ Road Repair
- ⚡ Retardant Drop
- ⚡ Route
- ⚡ IAS Launch and Recovery Zone
- ⚡ Temporary Flight Restriction
- ⚡ Fire Edge
- ⚡ Contained Line
- ⚡ Major Streams
- ⚡ 1 - BASIC CUSTODIAL CARE (CLOSED)
- ⚡ 2 - HIGH CLEARANCE VEHICLES
- ⚡ 3 - SUITABLE FOR PASSENGER CARS
- ⚡ 4 - MODERATE DEGREE OF USER COMFORT
- ⚡ 5 - HIGH DEGREE OF USER COMFORT
- ⚡ Wildfire Daily Fire Perimeter
- ⚡ Army Corps of Engineers
- ⚡ City Land
- ⚡ Forest Service
- ⚡ Forest Service Wilderness

PNW Team 3
8/21/2021 0921
Acres from IR
WGS 1984 Datum, Lat,Long Grid



43°54'N 122°43'W 122°42'W 122°41'W 122°40'W 122°39'W 122°38'W 122°37'W 122°36.01'W 122°35'W 122°34'W 122°33'W 122°32'W 122°31'W 122°30'W 122°29'W 122°28'W 122°27'W 122°26'W 122°25'W 122°24'W 122°23'W 122°22'W 122°21.01'W 122°20'W 122°19'W 122°18'W 122°17'W 122°16'W 122°15'W 122°14'W 122°13'W
44°42'N 44°41'N 44°40'N 44°39'N 44°38'N 44°37'N 44°36'N 44°35'N 44°34'N 44°33'N 44°32'N 44°31'N 44°30'N 44°29'N 44°28'N 44°27'N 44°26'N 44°25'N 44°24'N 44°23'N 44°22'N 44°21'N 44°20'N 44°19'N 44°18'N 44°17'N 44°16'N 44°15'N 44°14'N 44°13'N