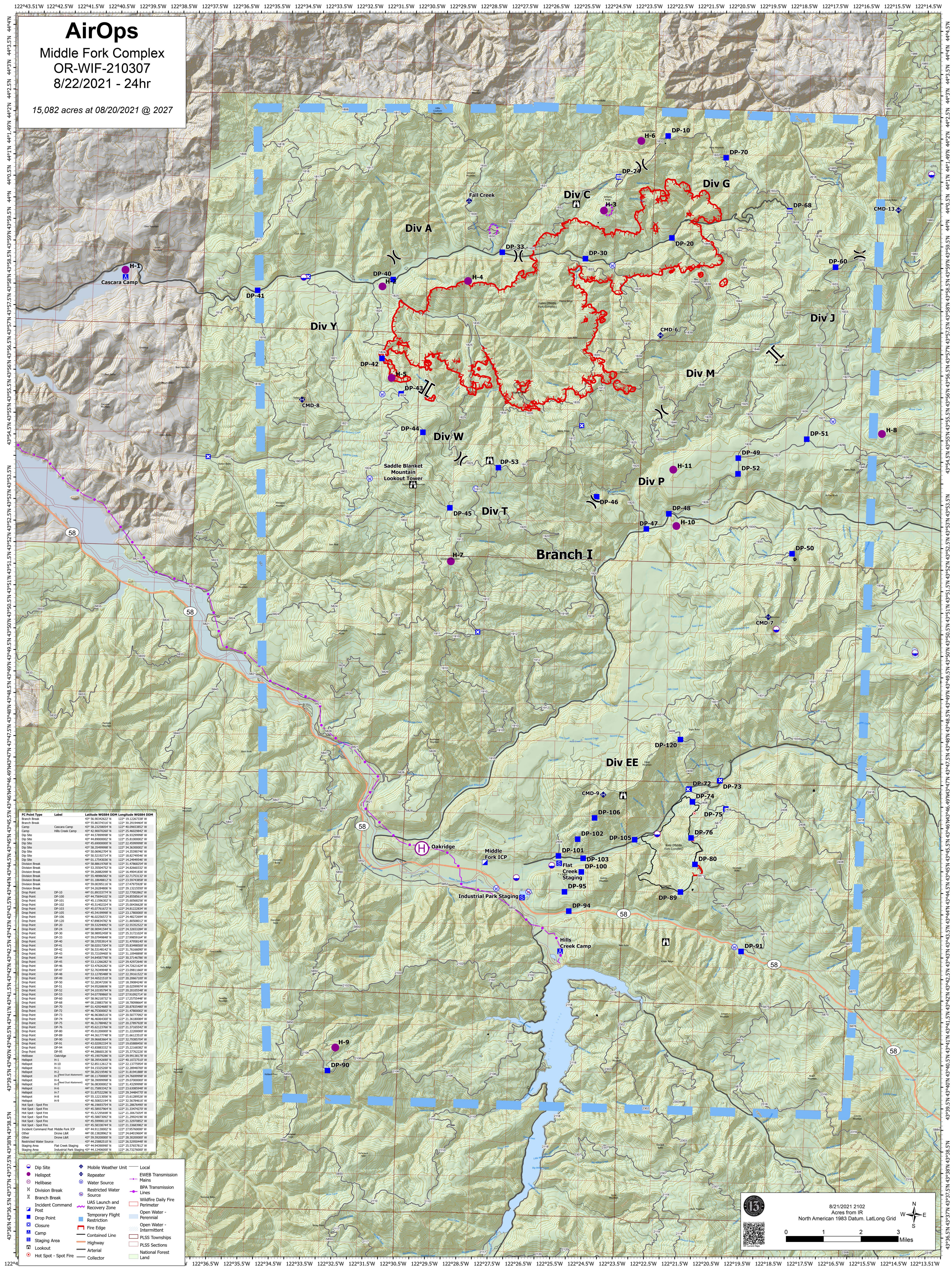


AirOps

Middle Fork Complex
OR-WIF-210307
8/22/2021 - 24hr

15,082 acres at 08/20/2021 @ 2027



IC Point Type	Label	Latitude WGS84 DDM	Longitude WGS84 DDM
Branch Break		43° 59.0162621' N	122° 38.2267378' W
Branch Break		43° 59.0637416' N	122° 38.2918444' W
Camp	Cascara Camp	43° 59.2230854' N	122° 40.0963827' W
Camp	Hill Creek Camp	43° 48.9007020' N	122° 28.4602982' W
Dip Site		43° 48.5789998' N	122° 28.5029999' W
Dip Site		43° 48.8960000' N	122° 28.5020000' W
Dip Site		43° 48.6000000' N	122° 28.4999999' W
Dip Site		43° 48.3049999' N	122° 28.3000000' W
Dip Site		43° 50.0096250' N	122° 18.3350000' W
Dip Site		43° 50.5219274' N	122° 18.8274954' W
Dip Site		44° 01.1254038' N	122° 18.2698888' W
Division Break		43° 58.8861968' N	122° 31.4788254' W
Division Break		43° 51.3550152' N	122° 18.8060222' W
Division Break		43° 59.3688208' N	122° 18.4904188' W
Division Break		43° 58.4898882' N	122° 22.7173132' W
Division Break		43° 41.1886812' N	122° 28.5093888' W
Division Break		43° 59.0039110' N	122° 27.4797588' W
Division Break		43° 51.3550152' N	122° 18.8060222' W
Drop Point	DP-10	44° 01.8933774' N	122° 23.7703882' W
Drop Point	DP-100	43° 48.7584888' N	122° 28.8558888' W
Drop Point	DP-101	43° 45.1199302' N	122° 25.6056825' W
Drop Point	DP-102	43° 45.5140324' N	122° 25.0048828' W
Drop Point	DP-103	43° 46.0778278' N	122° 24.8128288' W
Drop Point	DP-105	43° 45.5419998' N	122° 23.1780000' W
Drop Point	DP-106	43° 46.0256572' N	122° 24.4822999' W
Drop Point	DP-120	43° 47.8864782' N	122° 21.8058812' W
Drop Point	DP-20	43° 48.5334982' N	122° 24.3555222' W
Drop Point	DP-24	44° 00.9094154' N	122° 24.3303284' W
Drop Point	DP-30	43° 58.9892482' N	122° 25.3171024' W
Drop Point	DP-33	43° 58.0798888' N	122° 21.9888888' W
Drop Point	DP-40	43° 58.3705914' N	122° 21.4788148' W
Drop Point	DP-41	43° 58.0031738' N	122° 21.3788888' W
Drop Point	DP-42	43° 56.5148142' N	122° 31.7616600' W
Drop Point	DP-43	43° 55.7219490' N	122° 31.1094888' W
Drop Point	DP-44	43° 56.0787782' N	122° 31.1377664' W
Drop Point	DP-45	43° 53.1126682' N	122° 28.4297848' W
Drop Point	DP-46	43° 51.4703282' N	122° 28.3468778' W
Drop Point	DP-47	43° 52.7634948' N	122° 23.0981166' W
Drop Point	DP-48	43° 51.1258888' N	122° 23.3915222' W
Drop Point	DP-49	43° 54.4652150' N	122° 20.3068700' W
Drop Point	DP-50	43° 52.2834720' N	122° 18.3984248' W
Drop Point	DP-51	43° 54.9526888' N	122° 18.6128888' W
Drop Point	DP-52	43° 54.1018794' N	122° 20.2018548' W
Drop Point	DP-53	43° 54.0778278' N	122° 21.0298888' W
Drop Point	DP-54	43° 58.9621872' N	122° 17.5257448' W
Drop Point	DP-55	43° 58.2882782' N	122° 18.7898888' W
Drop Point	DP-56	44° 01.4258488' N	122° 18.8185488' W
Drop Point	DP-72	43° 46.7530000' N	122° 21.4788000' W
Drop Point	DP-73	43° 46.8186152' N	122° 20.5017778' W
Drop Point	DP-74	43° 46.4604300' N	122° 21.3618000' W
Drop Point	DP-75	43° 46.3178888' N	122° 21.3788888' W
Drop Point	DP-76	43° 45.6212376' N	122° 21.3716544' W
Drop Point	DP-80	43° 45.0230000' N	122° 21.2220000' W
Drop Point	DP-89	43° 46.3617744' N	122° 21.6128888' W
Drop Point	DP-90	43° 39.9663664' N	122° 32.7985704' W
Drop Point	DP-91	43° 41.0209318' N	122° 18.6588888' W
Drop Point	DP-94	43° 41.8388332' N	122° 23.2218832' W
Drop Point	DP-95	43° 48.2886152' N	122° 23.3782222' W
Helispot	Oakridge	43° 45.1907680' N	122° 28.9138178' W
Helispot	H-1	43° 58.3954892' N	122° 40.1072358' W
Helispot	H-2	43° 48.8511262' N	122° 21.1177664' W
Helispot	H-3	43° 54.1332200' N	122° 22.2894000' W
Helispot	H-4	43° 58.3021054' N	122° 21.3788888' W
Helispot	H-5	44° 01.1170000' N	122° 24.7669999' W
Helispot	H-6	43° 48.3084998' N	122° 21.0298888' W
Helispot	H-7	44° 01.7589342' N	122° 23.6308948' W
Helispot	H-8	43° 51.1211050' N	122° 15.6128954' W
Helispot	H-9	43° 45.5088152' N	122° 21.3788888' W
Hot Spot - Spot Fire		43° 46.1969374' N	122° 21.2867460' W
Hot Spot - Spot Fire		43° 45.5893796' N	122° 21.1347420' W
Hot Spot - Spot Fire		43° 45.5227966' N	122° 21.3067064' W
Hot Spot - Spot Fire		43° 45.5887302' N	122° 21.2994190' W
Hot Spot - Spot Fire		43° 45.5968118' N	122° 21.3088888' W
Hot Spot - Spot Fire		43° 45.5833874' N	122° 21.3388982' W
Hot Spot - Spot Fire		43° 45.6131000' N	122° 21.6108888' W
Other	Drone L&R	44° 00.1382862' N	122° 24.6401904' W
Other	Drone L&R	43° 59.5920000' N	122° 28.3020000' W
Restricted Water Source		43° 48.2886152' N	122° 23.3788888' W
Staging Area	Flat Creek Staging	43° 44.9430992' N	122° 25.5762782' W
Staging Area	Industrial Park Staging	43° 44.1340000' N	122° 28.7329000' W

- Dip Site
- Helispot
- Helibase
- Division Break
- Branch Break
- Incident Command Post
- Drop Point
- Closure
- Staging Area
- Lookout
- Hot Spot - Spot Fire
- Mobile Weather Unit
- Repeater
- Water Source
- Restricted Water Source
- UAS Launch and Recovery Zone
- Temporary Flight Restriction
- Fire Edge
- Contained Line
- Highway
- Arterial
- Collector
- Local EWEB Transmission Mains
- BPA Transmission Lines
- Wildfire Daily Fire Perimeter
- Open Water - Perennial
- Open Water - Intermittent
- PLSS Townships
- PLSS Sections
- National Forest
- Land

8/21/2021 2102
Acres from IR
North American 1983 Datum, LatLong Grid