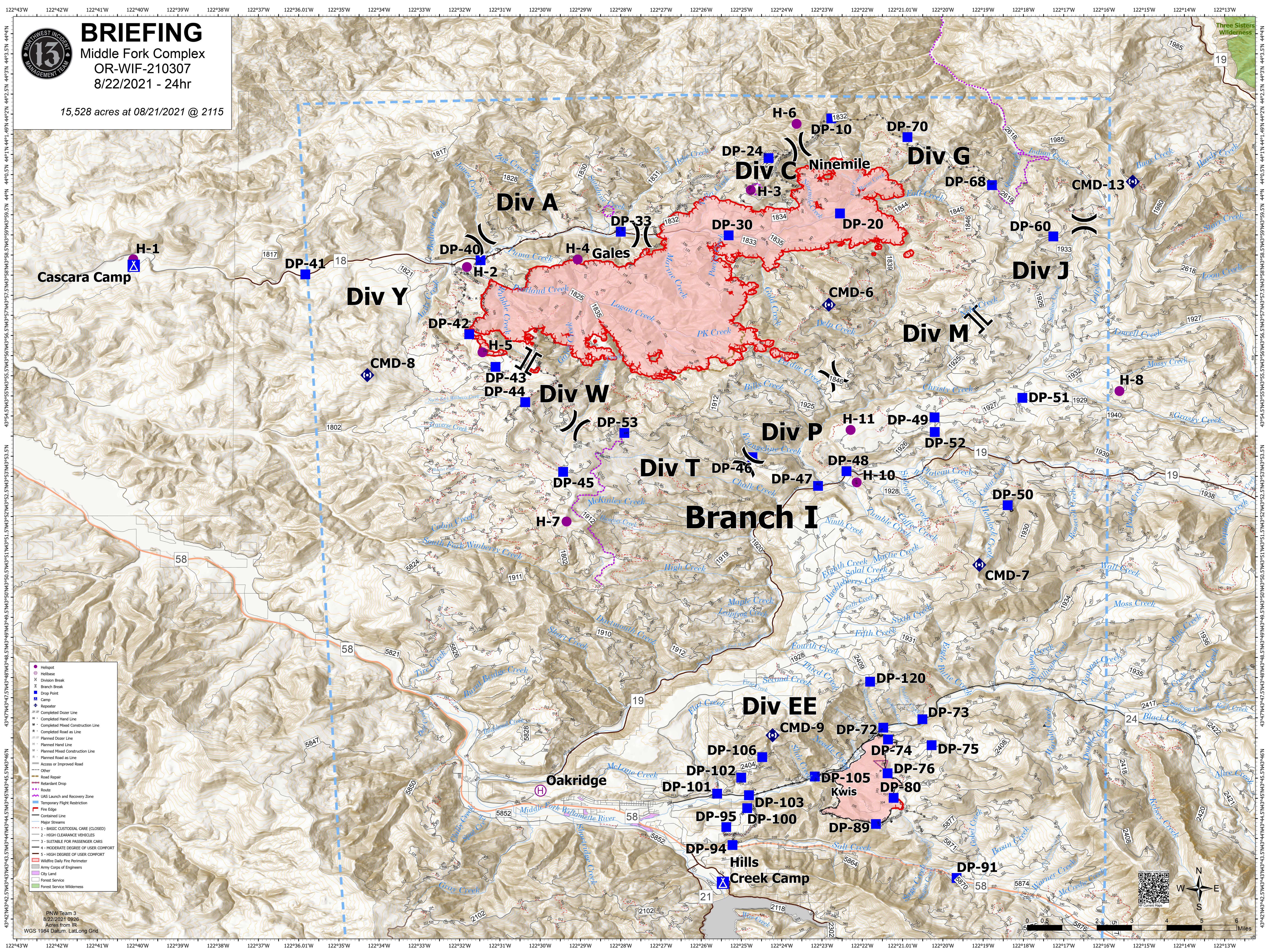




BRIEFING

Middle Fork Complex
OR-WIF-210307
8/22/2021 - 24hr

15,528 acres at 08/21/2021 @ 2115



- Heliport
- Helibase
- X Division Break
- ⌘ Branch Break
- Drop Point
- ▲ Camp
- ◆ Repeater
- ⊞ Completed Dozer Line
- ⊞ Completed Hand Line
- ⊞ Completed Mixed Construction Line
- ⊞ Completed Road as Line
- ⊞ Planned Dozer Line
- ⊞ Planned Hand Line
- ⊞ Planned Mixed Construction Line
- ⊞ Planned Road as Line
- ⊞ Access or Improved Road
- ⊞ Other
- ⊞ Road Repair
- ⊞ Retardant Drop
- ⊞ Route
- ⊞ IAS Launch and Recovery Zone
- ⊞ Temporary Flight Restriction
- ⊞ Fire Edge
- ⊞ Contained Line
- ⊞ Major Streams
- ⊞ 1 - BASIC CUSTODIAL CARE (CLOSED)
- ⊞ 2 - HIGH CLEARANCE VEHICLES
- ⊞ 3 - SUITABLE FOR PASSENGER CARS
- ⊞ 4 - MODERATE DEGREE OF USER COMFORT
- ⊞ 5 - HIGH DEGREE OF USER COMFORT
- ⊞ Wildfire Daily Fire Perimeter
- ⊞ Army Corps of Engineers
- ⊞ City Land
- ⊞ Forest Service
- ⊞ Forest Service Wilderness

PNW Team 3
8/22/2021 0926
Acres from IR
WGS 1984 Datum, Lat,Long Grid

