

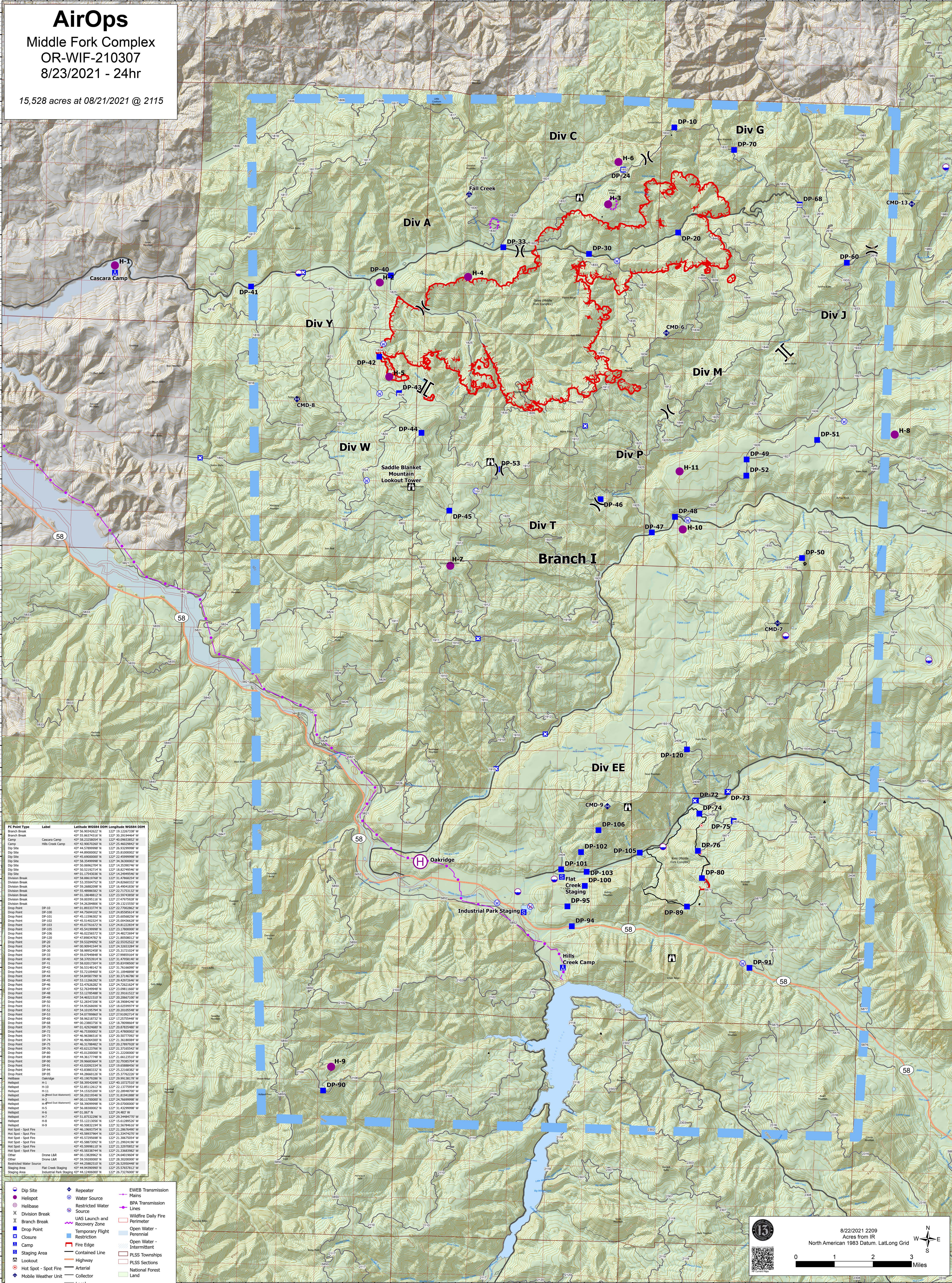
AirOps

Middle Fork Complex

OR-WIF-210307

8/23/2021 - 24hr

15,528 acres at 08/21/2021 @ 2115



IC Point Type	Label	Latitude WGS84 DDM	Longitude WGS84 DDM
Branch Break		43° 55.8637416' N	122° 30.2919444' W
Camp	Cascara Camp	43° 58.2328054' N	122° 40.0903852' W
Drop Point	Hills Creek Camp	43° 58.9007020' N	122° 26.9602968' W
Dip Site		43° 45.5789999' N	122° 26.9329999' W
Dip Site		43° 44.9999999' N	122° 26.9999999' W
Dip Site		43° 45.6999999' N	122° 23.4599999' W
Dip Site		43° 58.3599999' N	122° 34.3630000' W
Dip Site		43° 58.2916279' N	122° 24.3329000' W
Dip Site		43° 50.5219271' N	122° 18.8274654' W
Dip Site		44° 01.3764030' N	122° 14.2484999' W
Division Break		43° 58.8881978' N	122° 31.4786824' W
Division Break		43° 58.3265407' N	122° 24.8260231' W
Division Break		43° 59.2682000' N	122° 16.4004133' W
Division Break		43° 55.4898552' N	122° 22.7173132' W
Division Break		44° 01.1264912' N	122° 23.5293833' W
Division Break		43° 59.0095116' N	122° 27.4797592' W
Drop Point	DP-10	44° 01.8933374' N	122° 22.7700382' W
Drop Point	DP-100	43° 44.7594102' N	122° 24.8530514' W
Drop Point	DP-101	43° 45.1139307' N	122° 25.6056232' W
Drop Point	DP-102	43° 45.5140232' N	122° 25.0043623' W
Drop Point	DP-103	43° 45.9032023' N	122° 24.8122238' W
Drop Point	DP-105	43° 45.5419998' N	122° 23.1780000' W
Drop Point	DP-106	43° 46.0222627' N	122° 24.4827289' W
Drop Point	DP-120	43° 47.8281020' N	122° 24.8260231' W
Drop Point	DP-20	43° 59.5324902' N	122° 22.5532522' W
Drop Point	DP-24	44° 00.9004154' N	122° 24.2484999' W
Drop Point	DP-30	43° 58.9852438' N	122° 25.3172124' W
Drop Point	DP-33	43° 58.0798980' N	122° 27.9192714' W
Drop Point	DP-40	43° 58.3765394' N	122° 31.4796140' W
Drop Point	DP-41	43° 58.0201730' N	122° 25.8319850' W
Drop Point	DP-42	43° 55.1139307' N	122° 25.7616600' W
Drop Point	DP-43	43° 55.7210940' N	122° 31.1094898' W
Drop Point	DP-44	43° 58.8468327' N	122° 25.3714078' W
Drop Point	DP-45	43° 53.1126282' N	122° 25.4297546' W
Drop Point	DP-46	43° 52.4762682' N	122° 24.7262124' W
Drop Point	DP-47	43° 52.7649587' N	122° 25.0981560' W
Drop Point	DP-48	43° 53.1278488' N	122° 22.3916152' W
Drop Point	DP-49	43° 56.4603157' N	122° 20.2662710' W
Drop Point	DP-50	43° 52.2834726' N	122° 18.3998446' W
Drop Point	DP-51	43° 54.9586688' N	122° 23.2375444' W
Drop Point	DP-52	43° 54.1019579' N	122° 20.2010558' W
Drop Point	DP-53	43° 54.0778880' N	122° 27.9192714' W
Drop Point	DP-54	43° 56.9618717' N	122° 22.2325444' W
Drop Point	DP-55	44° 00.2388736' N	122° 18.7808664' W
Drop Point	DP-60	43° 56.9294888' N	122° 23.2375444' W
Drop Point	DP-68	44° 00.2388736' N	122° 18.7808664' W
Drop Point	DP-70	44° 01.1264912' N	122° 23.5293833' W
Drop Point	DP-72	43° 46.7530002' N	122° 21.4780000' W
Drop Point	DP-73	43° 46.9638516' N	122° 20.5077000' W
Drop Point	DP-74	43° 46.3178482' N	122° 21.3618000' W
Drop Point	DP-75	43° 46.3178482' N	122° 20.2789792' W
Drop Point	DP-76	43° 46.3178482' N	122° 20.2789792' W
Drop Point	DP-77	43° 45.0120000' N	122° 21.2200000' W
Drop Point	DP-79	43° 44.3617748' N	122° 21.6612332' W
Drop Point	DP-80	43° 44.3617748' N	122° 21.6612332' W
Drop Point	DP-81	43° 43.0202323' N	122° 19.6584800' W
Drop Point	DP-84	43° 41.8383173' N	122° 25.6163800' W
Drop Point	DP-85	43° 44.2866126' N	122° 25.3712226' W
Drop Point	DP-89	43° 45.1807828' N	122° 20.5913110' W
Helispot	H-1	43° 58.3954260' N	122° 40.1027210' W
Helispot	H-10	43° 52.8511262' N	122° 22.1377995' W
Helispot	H-11	43° 51.1523200' N	122° 22.3894888' W
Helispot	H-3	43° 58.2021954' N	122° 31.8194188' W
Helispot	H-4	44° 01.1264912' N	122° 23.5293833' W
Helispot	H-5	43° 58.3999999' N	122° 29.0700000' W
Helispot	H-6	43° 58.0830002' N	122° 31.4229999' W
Helispot	H-7	44° 01.1264912' N	122° 23.5293833' W
Helispot	H-8	43° 51.8753296' N	122° 29.3448470' W
Helispot	H-9	43° 40.5832194' N	122° 32.5674616' W
Hot Spot - Spot Fire		43° 46.9638516' N	122° 20.5077000' W
Hot Spot - Spot Fire		43° 45.5795668' N	122° 21.3607500' W
Hot Spot - Spot Fire		43° 45.5795668' N	122° 21.3607500' W
Hot Spot - Spot Fire		43° 45.5795668' N	122° 21.3607500' W
Hot Spot - Spot Fire		43° 45.5795668' N	122° 21.3607500' W
Hot Spot - Spot Fire		43° 45.5795668' N	122° 21.3607500' W
Hot Spot - Spot Fire		43° 45.5795668' N	122° 21.3607500' W
Hot Spot - Spot Fire		43° 45.5795668' N	122° 21.3607500' W
Other	Donor LAR	44° 01.1328962' N	122° 24.6401904' W
Other	Donor LAR	43° 58.5900000' N	122° 28.3020000' W
Restricted Water Source		43° 44.9439000' N	122° 25.5767812' W
Staging Area	Flat Creek Staging	43° 44.9439000' N	122° 25.5767812' W
Staging Area	Industrial Park Staging	43° 44.1240000' N	122° 26.7327000' W

- Dip Site
- Helispot
- Helibase
- Division Break
- Branch Break
- Drop Point
- Closure
- Camp
- Staging Area
- Lookout
- Hot Spot - Spot Fire
- Mobile Weather Unit
- Repeater
- Water Source
- Restricted Water Source
- UAS Launch and Recovery Zone
- Temporary Flight Restriction
- Fire Edge
- Contained Line
- Highway
- Arterial
- Local
- EWEB Transmission Mains
- BPA Transmission Lines
- Wildfire Daily Fire Perimeter
- Open Water - Perennial
- Open Water - Intermittent
- PLSS Townships
- PLSS Sections
- National Forest Land

8/23/2021
Acres from IR
North American 1983 Datum, LatLong Grid