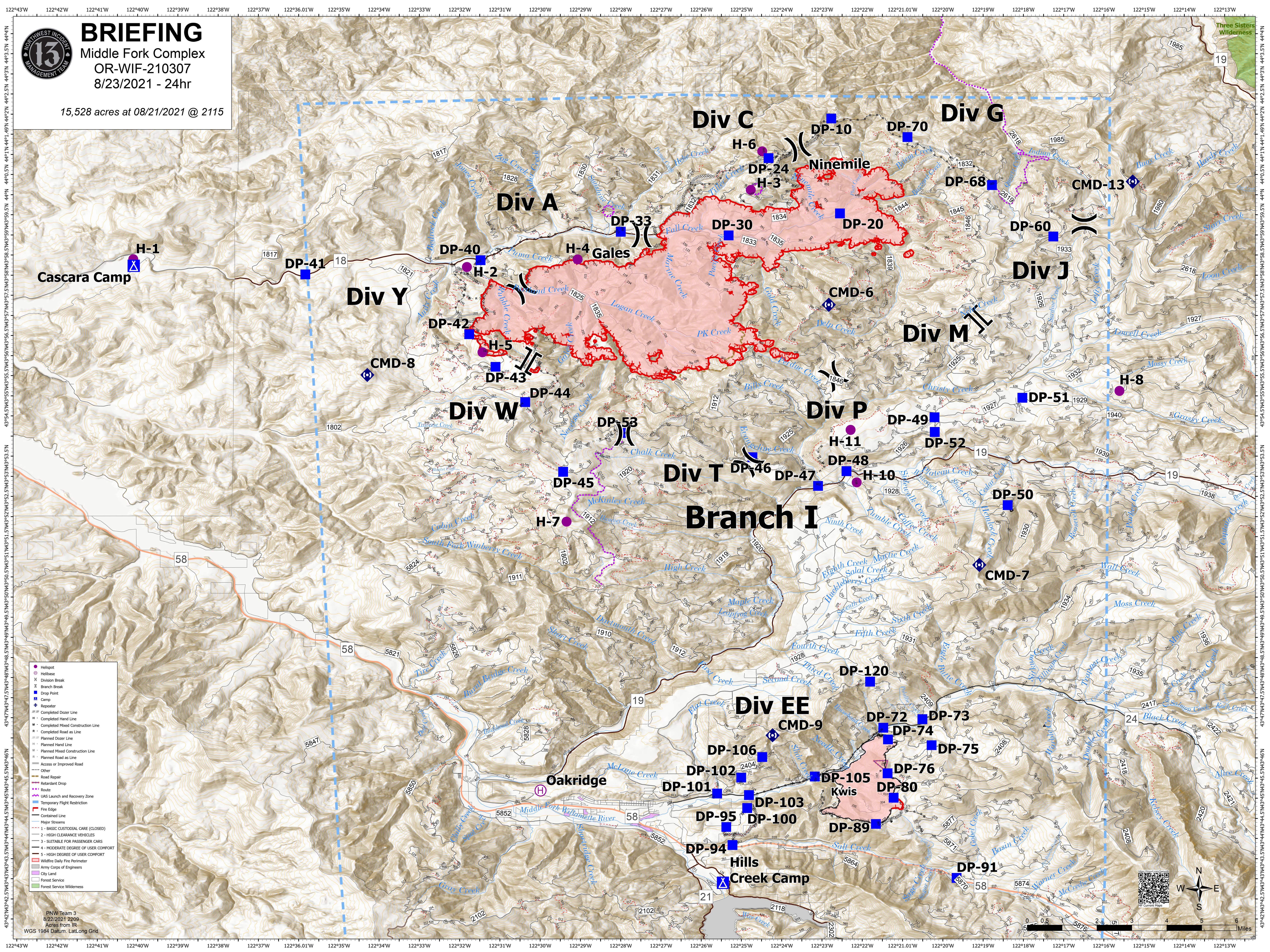




BRIEFING

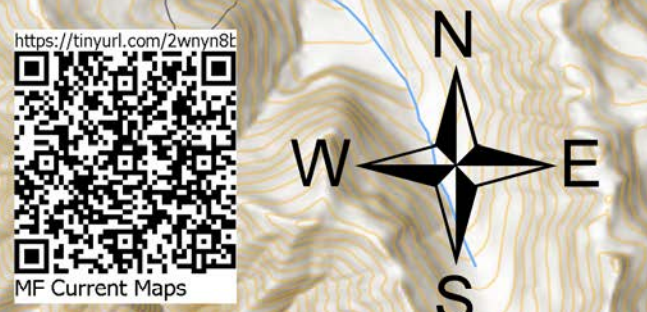
Middle Fork Complex
OR-WIF-210307
8/23/2021 - 24hr

15,528 acres at 08/21/2021 @ 2115



- Heliport
- Heli-base
- X Division Break
- ⌘ Branch Break
- Drop Point
- ▲ Camp
- ◆ Repeater
- ⊞ Completed Dozer Line
- ⊞ Completed Hand Line
- ⊞ Completed Mixed Construction Line
- ⊞ Completed Road as Line
- ⊞ Planned Dozer Line
- ⊞ Planned Hand Line
- ⊞ Planned Mixed Construction Line
- ⊞ Planned Road as Line
- ⊞ Access or Improved Road
- ⊞ Other
- ⊞ Road Repair
- ⊞ Retardant Drop
- ⊞ Route
- ⊞ IAS Launch and Recovery Zone
- ⊞ Temporary Flight Restriction
- ⊞ Fire Edge
- ⊞ Contained Line
- ⊞ Major Streams
- ⊞ 1 - BASIC CUSTODIAL CARE (CLOSED)
- ⊞ 2 - HIGH CLEARANCE VEHICLES
- ⊞ 3 - SUITABLE FOR PASSENGER CARS
- ⊞ 4 - MODERATE DEGREE OF USER COMFORT
- ⊞ 5 - HIGH DEGREE OF USER COMFORT
- ⊞ Wildfire Daily Fire Perimeter
- ⊞ Army Corps of Engineers
- ⊞ Forest Service
- ⊞ Forest Service Wilderness

PNW Team 3
8/22/2021 2209
Acres from IR
WGS 1984 Datum, Lat,Long Grid



43°54'N 122°43'W 122°42'W 122°41'W 122°40'W 122°39'W 122°38'W 122°37'W 122°36.01'W 122°35'W 122°34'W 122°33'W 122°32'W 122°31'W 122°30'W 122°29'W 122°28'W 122°27'W 122°26'W 122°25'W 122°24'W 122°23'W 122°22'W 122°21.01'W 122°20'W 122°19'W 122°18'W 122°17'W 122°16'W 122°15'W 122°14'W 122°13'W