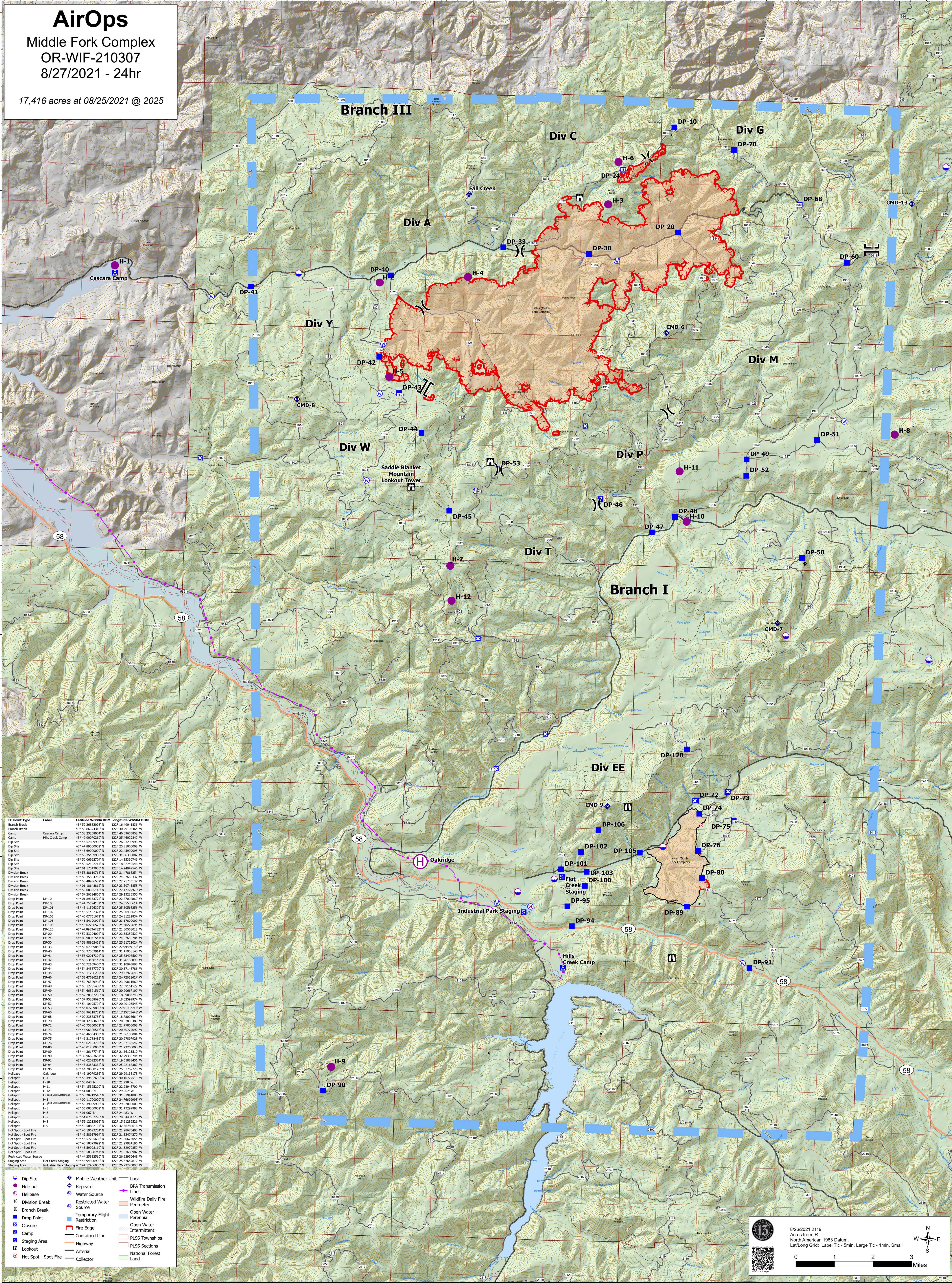


# AirOps

Middle Fork Complex  
OR-WIF-210307  
8/27/2021 - 24hr

17,416 acres at 08/25/2021 @ 2025



FC Point Type	Label	Latitude WGS84 DDM	Longitude WGS84 DDM
Branch Break		43° 59.2682079' N	122° 16.4904330' W
Branch Break		43° 59.2682079' N	122° 16.4904330' W
Camp	Cascara Camp	43° 58.2328054' N	122° 40.0963852' W
Camp	Hills Creek Camp	43° 42.0026982' N	122° 25.4602984' W
Dip Site		43° 44.5789998' N	122° 26.9329998' W
Dip Site		43° 44.8900002' N	122° 25.1000002' W
Dip Site		43° 45.0000000' N	122° 22.4500000' W
Dip Site		43° 58.3549998' N	122° 34.3630002' W
Dip Site		43° 50.0662704' N	122° 14.2630946' W
Dip Site		43° 50.5219274' N	122° 18.8274954' W
Dip Site		44° 01.3743030' N	122° 14.2494946' W
Division Break		43° 58.8619768' N	122° 21.7806544' W
Division Break		43° 53.2504752' N	122° 24.8266032' W
Division Break		43° 55.4896582' N	122° 22.3179312' W
Division Break		44° 01.1864881' N	122° 23.5974388' W
Division Break		43° 59.0039518' N	122° 27.4797528' W
Division Break		43° 54.2019586' N	122° 29.3115586' W
Division Break		44° 01.8933774' N	122° 22.7700862' W
Drop Point	DP-10	43° 45.1159630' N	122° 25.6568256' W
Drop Point	DP-101	43° 45.1159630' N	122° 25.6568256' W
Drop Point	DP-102	43° 45.5140224' N	122° 25.0043028' W
Drop Point	DP-103	43° 45.0761872' N	122° 24.8122284' W
Drop Point	DP-104	43° 45.5419998' N	122° 23.1780000' W
Drop Point	DP-105	43° 46.0226272' N	122° 24.8222696' W
Drop Point	DP-120	43° 47.8864782' N	122° 21.8058012' W
Drop Point	DP-20	43° 59.5349042' N	122° 23.5325232' W
Drop Point	DP-24	44° 00.0094544' N	122° 24.2350284' W
Drop Point	DP-30	43° 58.9892458' N	122° 25.3172024' W
Drop Point	DP-31	43° 59.0794882' N	122° 27.9699514' W
Drop Point	DP-40	43° 58.3705394' N	122° 31.4795814' W
Drop Point	DP-41	43° 58.0201704' N	122° 35.8149000' W
Drop Point	DP-42	43° 56.5118142' N	122° 21.7666096' W
Drop Point	DP-43	43° 55.2109002' N	122° 31.1094888' W
Drop Point	DP-44	43° 54.4857700' N	122° 30.7146280' W
Drop Point	DP-45	43° 53.1126282' N	122° 29.4297264' W
Drop Point	DP-46	43° 53.4762832' N	122° 24.2621624' W
Drop Point	DP-47	43° 52.39998' N	122° 23.6811660' W
Drop Point	DP-48	43° 53.1278488' N	122° 22.3915122' W
Drop Point	DP-49	43° 54.6523100' N	122° 20.2650100' W
Drop Point	DP-50	43° 52.2834206' N	122° 18.3908424' W
Drop Point	DP-51	43° 54.5026896' N	122° 18.0299974' W
Drop Point	DP-52	43° 54.1919704' N	122° 20.1220000' W
Drop Point	DP-53	43° 54.0778960' N	122° 27.9109274' W
Drop Point	DP-54	43° 58.0218272' N	122° 12.2755446' W
Drop Point	DP-55	44° 00.2388376' N	122° 18.7808664' W
Drop Point	DP-70	44° 01.4292460' N	122° 20.8783440' W
Drop Point	DP-72	43° 46.7330002' N	122° 21.4780000' W
Drop Point	DP-73	43° 46.9638616' N	122° 20.5077002' W
Drop Point	DP-74	43° 46.2943000' N	122° 21.8110000' W
Drop Point	DP-75	43° 46.3178482' N	122° 20.2789708' W
Drop Point	DP-76	43° 45.6212306' N	122° 21.3716054' W
Drop Point	DP-80	43° 45.1200000' N	122° 21.2200000' W
Drop Point	DP-89	43° 44.3617748' N	122° 21.4612310' W
Drop Point	DP-90	43° 29.6684664' N	122° 32.3802704' W
Drop Point	DP-91	43° 43.0209234' N	122° 19.6588846' W
Drop Point	DP-94	43° 43.8883312' N	122° 25.2168882' W
Drop Point	DP-95	43° 44.2866120' N	122° 25.7722200' W
Drop Point	DP-96	43° 45.1907828' N	122° 29.5913812' W
Drop Point	DP-97	43° 45.5623400' N	122° 40.0721000' W
Drop Point	DP-98	43° 53.048' N	122° 21.998' W
Drop Point	DP-99	43° 54.3325200' N	122° 22.8949700' W
Drop Point	DP-100	43° 51.007' N	122° 29.827' W
Drop Point	DP-101	43° 58.2021944' N	122° 31.8194888' W
Drop Point	DP-102	43° 50.1700000' N	122° 24.6699996' W
Drop Point	DP-103	43° 58.3009998' N	122° 29.0700000' W
Drop Point	DP-104	43° 56.0000002' N	122° 31.4299998' W
Drop Point	DP-105	44° 01.007' N	122° 25.7722200' W
Drop Point	DP-106	43° 51.8753296' N	122° 29.3448470' W
Drop Point	DP-107	43° 53.1231296' N	122° 15.1399270' W
Drop Point	DP-108	43° 40.5083194' N	122° 32.5674616' W
Hot Spot - Spot Fire		43° 46.1969254' N	122° 21.2867490' W
Hot Spot - Spot Fire		43° 45.8907848' N	122° 21.2867490' W
Hot Spot - Spot Fire		43° 45.5729588' N	122° 21.3687504' W
Hot Spot - Spot Fire		43° 45.5873802' N	122° 21.3687504' W
Hot Spot - Spot Fire		43° 45.5998110' N	122° 21.3297082' W
Hot Spot - Spot Fire		43° 45.5838844' N	122° 21.3683882' W
Restricted Water Source		43° 44.2488210' N	122° 26.2009440' W
Staging Area	Flat Creek Staging	43° 44.9430900' N	122° 25.5767812' W
Staging Area	Industrial Park Staging	43° 44.1246000' N	122° 26.7327000' W

Legend:

- Dip Site
- Helispot
- Helibase
- Division Break
- Branch Break
- Drop Point
- Closure
- Camp
- Staging Area
- Lookout
- Hot Spot - Spot Fire
- Mobile Weather Unit
- Repeater
- Water Source
- Restricted Water Source
- Temporary Flight Restriction
- Fire Edge
- Contained Line
- Highway
- Arterial
- Collector
- Local BPA Transmission Lines
- Wildfire Daily Fire Perimeter
- Open Water - Perennial
- Open Water - Intermittent
- PLSS Townships
- PLSS Sections
- National Forest Land

8/28/2021 2119  
Acres from IR  
North American 1983 Datum.  
LatLong Grid: Label Tic - 5min, Large Tic - 1min, Small