

Pilot Map

Middle Fork Complex
OR-WIF-210307

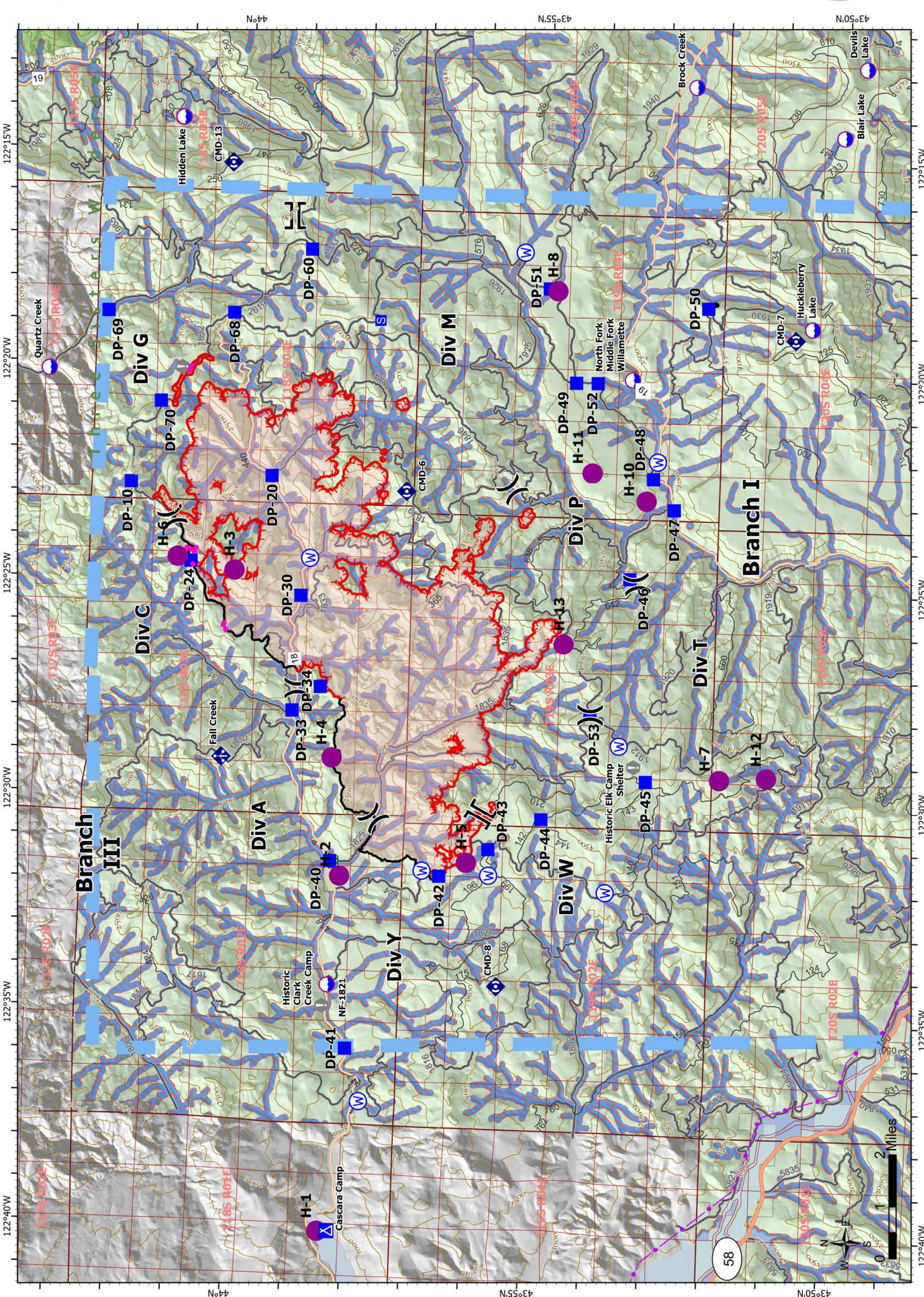
9/01/2021 - 24hr

20,506 acres

at 08/30/2021 @ 2135

- Dip Site
- Helispot
- Division Break
- Branch Break
- Drop Point
- Camp
- Staging Area
- Value at Risk
- Water Development or Draft Site
- Mobile Weather Unit
- Repeater
- Water Source
- BPA Transmission Lines
- Highway
- Arterial
- Collector
- Local
- Contour (500')
- PLSS Townships
- PLSS Sections
- Open Water - Perennial
- Open Water - Intermittent
- Temporary Flight Restriction
- Fire Edge
- Contained Line
- Wildfire Daily Fire Perimeter
- Wilderness
- National Forest Land
- Retardant Avoidant Point
- Retardant Avoidance

8/31/2021 2311
North American 1983
LAI Long Grid
Label Ttc: 5min
Large Ttc: 1min
Small Ttc: 10sec





Middle Fork Complex Pilot Table

FC Point Type	Label	Latitude WGS84 DDM	Longitude WGS84 DDM
Branch Break		43° 59.26882098'	122° 16.49041836'
Branch Break		43° 55.86374316'	122° 30.29194464'
Camp	Cascara Camp	43° 58.23258054'	122° 40.09653852'
Camp	Hills Creek	43° 42.90070260'	122° 25.46029842'
Camp	Winberry	43° 56.350 N	122° 44.967' W
Dip Site	Blair Lake	43° 50.06962704'	122° 14.35390746'
Dip Site	Brock Creek	43° 52.57836852'	122° 13.25594454'
Dip Site	Devils Lake	43° 49.71831930'	122° 12.74629284'
Dip Site	East Salmon	43° 44.89000002'	122° 25.81000002'
Dip Site	Hidden Lake	44° 01.17543036'	122° 14.24949546'
Dip Site	Huckleberry	43° 50.52192714'	122° 18.82749546'
Dip Site	Needle Creek	43° 45.69000000'	122° 22.45999998'
Dip Site	NF-1821	43° 58.35499998'	122° 34.36300002'
Dip Site	North Fork	43° 53.521' N	122° 20.101' W
Dip Site	Quartz Creek	44° 03.317' N	122° 20.178' W
Dip Site	West Salmon	43° 44.57899998'	122° 26.93299998'
Division Break		43° 58.88619768'	122° 31.47868254'
Division Break		43° 53.35504752'	122° 24.82660332'
Division Break		43° 55.48986582'	122° 22.71753132'
Division Break		44° 01.18648812'	122° 23.59743858'
Division Break		43° 59.00395116'	122° 27.47975928'
Division Break		43° 54.26284806'	122° 29.13215550'
Drop Point	DP-10	44° 01.89333774'	122° 22.77002862'
Drop Point	DP-100	43° 44.75694102'	122° 24.85585614'
Drop Point	DP-101	43° 45.11596302'	122° 25.60568256'
Drop Point	DP-102	43° 45.51402324'	122° 25.00436628'
Drop Point	DP-103	43° 45.07761672'	122° 24.81222834'
Drop Point	DP-105	43° 45.54199998'	122° 23.17800000'
Drop Point	DP-106	43° 46.02256572'	122° 24.48272694'
Drop Point	DP-120	43° 47.89834782'	122° 21.80508012'
Drop Point	DP-20	43° 59.53294092'	122° 22.55352522'
Drop Point	DP-24	44° 00.852' N	122° 24.577' W
Drop Point	DP-30	43° 58.98952458'	122° 25.31721024'
Drop Point	DP-33	43° 59.07949848'	122° 27.99859164'
Drop Point	DP-34	43° 58.618' N	122° 27.432' W
Drop Point	DP-40	43° 58.37053914'	122° 31.47958140'
Drop Point	DP-41	43° 58.02017304'	122° 35.83498500'
Drop Point	DP-42	43° 56.53148142'	122° 31.76166090'
Drop Point	DP-43	43° 55.72109400'	122° 31.10948898'
Drop Point	DP-44	43° 54.84587790'	122° 30.37146786'
Drop Point	DP-45	43° 53.11266282'	122° 29.42972646'
Drop Point	DP-46	43° 53.47626282'	122° 24.72621624'
Drop Point	DP-47	43° 52.76349948'	122° 23.09811660'
Drop Point	DP-48	43° 53.12785488'	122° 22.39161522'
Drop Point	DP-49	43° 54.46521510'	122° 20.20667100'
Drop Point	DP-50	43° 52.28347206'	122° 18.39084246'



Middle Fork Complex Pilot Table

FC Point Type	Label	Latitude WGS84 DDM	Longitude WGS84 DDM
Drop Point	DP-51	43° 54.95268696'	122° 18.02599974'
Drop Point	DP-52	43° 54.10195794'	122° 20.20105548'
Drop Point	DP-53	43° 54.07789860'	122° 27.91092714'
Drop Point	DP-60	43° 58.96218732'	122° 17.25755448'
Drop Point	DP-68	44° 00.23883756'	122° 18.78098664'
Drop Point	DP-69	44° 02.350' N	122° 18.796' W
Drop Point	DP-70	44° 01.42924680'	122° 20.87835480'
Drop Point	DP-72	43° 46.75300002'	122° 21.47800002'
Drop Point	DP-73	43° 46.96386516'	122° 20.50777092'
Drop Point	DP-74	43° 46.46064300'	122° 21.36180084'
Drop Point	DP-75	43° 46.31788482'	122° 20.27897928'
Drop Point	DP-76	43° 45.62123766'	122° 21.37165542'
Drop Point	DP-80	43° 45.01200000'	122° 21.22200000'
Drop Point	DP-89	43° 44.36177748'	122° 21.66123510'
Drop Point	DP-90	43° 39.96683664'	122° 32.79385704'
Drop Point	DP-91	43° 43.02092334'	122° 19.65888456'
Drop Point	DP-94	43° 43.83883332'	122° 25.22168382'
Drop Point	DP-95	43° 35.15340000'	122° 29.72760000'
Drop Point	DP-95	43° 44.28660126'	122° 25.37762226'
Drop Point	DP-96	43° 35.30196480'	122° 29.26609212'
Helibase	Oakridge	43° 45.19079286'	122° 29.99138178'
Helispot	H-1	43° 58.39542690'	122° 40.10727510'
Helispot	H-10	43° 53.230' N	122° 22.888' W
Helispot	H-11	43° 54.15325200'	122° 22.28948700'
Helispot	H-12	43° 51.083' N	122° 29.267' W
Helispot	H-13	43° 54.550' N	122° 26.267' W
Helispot	H-2	43° 58.20219546'	122° 31.81941888'
Helispot	H-3	44° 00.11700000'	122° 24.76699998'
Helispot	H-4	43° 58.39099998'	122° 29.07000000'
Helispot	H-5	43° 56.08300002'	122° 31.43299998'
Helispot	H-6	44° 01.067' N	122° 24.483' W
Helispot	H-7	43° 51.87532296'	122° 29.34484770'
Helispot	H-8	43° 54.808' N	122° 18.050' W
Helispot	H-9	43° 40.50832194'	122° 32.56784616'
Incident Command	ICP - Lane		
Restricted Water		43° 44.25882510'	122° 26.52950448'
Staging Area			
Staging Area	Flat Creek	43° 44.94390990'	122° 25.57657812'
Staging Area	Industrial Park	43° 44.12406000'	122° 26.73276000'