

AIR OPS

9/7/2021 - 24hr

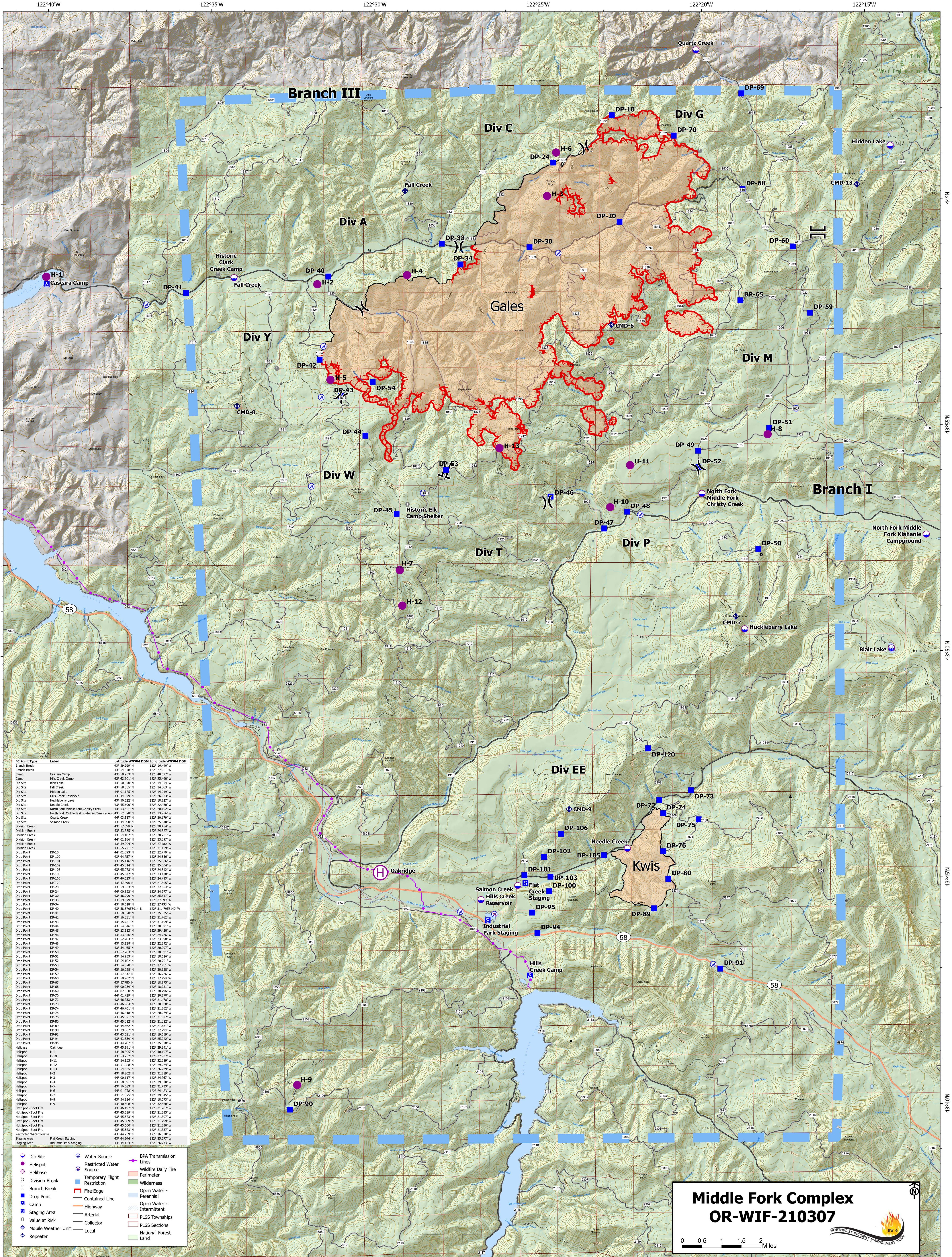
25,944 acres 09/05/2021 @ 2104

Gales: 24,459 acres; Kwis: 1,485 acres

Middle Fork Complex

Map Created 9/6/2021 @ 1859

Date: North American 1983 Acres from IR Lat/Long Grid



FC Point Type	Label	Latitude WGS84	Longitude WGS84
Branch Break		43° 54.076' N	122° 27.911' W
Camp	Cascara Camp	43° 58.237' N	122° 40.907' W
Camp	Hills Creek Camp	43° 42.801' N	122° 25.867' W
Dip Site	Blair Lake	43° 50.070' N	122° 14.254' W
Dip Site	Fall Creek	43° 58.355' N	122° 34.267' W
Dip Site	Hidden Lake	44° 01.175' N	122° 14.249' W
Dip Site	Hills Creek Reservoir	43° 44.579' N	122° 28.833' W
Dip Site	Huckleberry Lake	43° 50.322' N	122° 18.877' W
Dip Site	Needle Creek	43° 45.697' N	122° 22.460' W
Dip Site	North Fork Middle Fork Christy Creek	43° 53.578' N	122° 40.300' W
Dip Site	North Fork Middle Fork Kiahnie Campground	43° 52.578' N	122° 13.256' W
Dip Site	Quartz Creek	44° 03.317' N	122° 20.179' W
Dip Site	Salmon Creek	44° 48.890' N	122° 25.810' W
Division Break		43° 57.659' N	122° 30.454' W
Division Break		43° 53.350' N	122° 24.827' W
Division Break		43° 54.102' N	122° 20.201' W
Division Break		44° 01.580' N	122° 22.339' W
Division Break		43° 59.004' N	122° 27.480' W
Division Break		43° 55.721' N	122° 31.109' W
Drop Point	DP-10	43° 52.882' N	122° 22.707' W
Drop Point	DP-100	44° 44.757' N	122° 24.856' W
Drop Point	DP-101	43° 45.180' N	122° 24.568' W
Drop Point	DP-102	43° 45.514' N	122° 25.204' W
Drop Point	DP-103	43° 45.078' N	122° 24.812' W
Drop Point	DP-105	43° 45.542' N	122° 23.176' W
Drop Point	DP-106	43° 46.023' N	122° 24.483' W
Drop Point	DP-120	43° 42.898' N	122° 21.807' W
Drop Point	DP-20	43° 59.533' N	122° 23.554' W
Drop Point	DP-24	44° 00.852' N	122° 24.577' W
Drop Point	DP-30	43° 58.990' N	122° 25.311' W
Drop Point	DP-33	43° 59.679' N	122° 27.999' W
Drop Point	DP-34	43° 58.818' N	122° 27.999' W
Drop Point	DP-40	43° 58.200' N	122° 31.479' W
Drop Point	DP-42	43° 56.531' N	122° 31.762' W
Drop Point	DP-43	43° 55.721' N	122° 31.109' W
Drop Point	DP-44	43° 54.640' N	122° 29.271' W
Drop Point	DP-45	43° 53.117' N	122° 29.430' W
Drop Point	DP-46	43° 53.930' N	122° 28.710' W
Drop Point	DP-47	43° 52.763' N	122° 23.998' W
Drop Point	DP-48	43° 53.138' N	122° 22.392' W
Drop Point	DP-49	43° 54.465' N	122° 20.207' W
Drop Point	DP-50	43° 52.289' N	122° 18.291' W
Drop Point	DP-51	43° 54.915' N	122° 18.028' W
Drop Point	DP-52	43° 54.102' N	122° 20.201' W
Drop Point	DP-53	43° 54.078' N	122° 21.807' W
Drop Point	DP-54	43° 56.028' N	122° 30.138' W
Drop Point	DP-55	43° 52.277' N	122° 16.726' W
Drop Point	DP-56	43° 56.962' N	122° 17.807' W
Drop Point	DP-57	43° 57.780' N	122° 18.873' W
Drop Point	DP-58	44° 00.239' N	122° 18.781' W
Drop Point	DP-59	44° 02.350' N	122° 18.796' W
Drop Point	DP-60	44° 01.439' N	122° 20.528' W
Drop Point	DP-65	43° 46.753' N	122° 21.478' W
Drop Point	DP-68	43° 46.964' N	122° 20.508' W
Drop Point	DP-69	43° 46.861' N	122° 21.862' W
Drop Point	DP-70	43° 46.318' N	122° 20.279' W
Drop Point	DP-72	43° 45.837' N	122° 21.373' W
Drop Point	DP-73	43° 45.812' N	122° 21.222' W
Drop Point	DP-74	43° 44.262' N	122° 21.461' W
Drop Point	DP-75	43° 39.967' N	122° 18.794' W
Drop Point	DP-76	43° 43.021' N	122° 19.659' W
Drop Point	DP-77	43° 43.839' N	122° 25.222' W
Drop Point	DP-78	43° 44.287' N	122° 25.278' W
Drop Point	DP-79	44° 01.439' N	122° 20.528' W
Drop Point	DP-80	43° 46.395' N	122° 40.107' W
Drop Point	DP-81	43° 53.232' N	122° 22.907' W
Drop Point	DP-82	43° 54.132' N	122° 22.827' W
Drop Point	DP-83	43° 51.088' N	122° 29.274' W
Drop Point	DP-84	43° 54.055' N	122° 26.230' W
Drop Point	DP-85	43° 58.202' N	122° 31.819' W
Drop Point	DP-86	44° 00.117' N	122° 24.707' W
Drop Point	DP-87	43° 56.791' N	122° 29.270' W
Drop Point	DP-88	43° 56.083' N	122° 31.433' W
Drop Point	DP-89	44° 02.078' N	122° 24.483' W
Drop Point	DP-90	43° 51.873' N	122° 29.245' W
Drop Point	DP-91	43° 54.818' N	122° 18.818' W
Drop Point	DP-92	43° 40.508' N	122° 32.568' W
Hot Spot - Spot Fire		43° 46.197' N	122° 21.287' W
Hot Spot - Spot Fire		43° 45.589' N	122° 21.307' W
Hot Spot - Spot Fire		43° 45.577' N	122° 21.307' W
Hot Spot - Spot Fire		43° 45.589' N	122° 21.309' W
Hot Spot - Spot Fire		43° 45.600' N	122° 21.330' W
Hot Spot - Spot Fire		43° 45.587' N	122° 21.337' W
Hot Spot - Spot Fire		43° 44.239' N	122° 26.330' W
Staging Area	Flat Creek Staging	43° 44.944' N	122° 25.577' W
Staging Area	Industrial Park Staging	43° 44.124' N	122° 26.723' W

- Drop Site
- Helispot
- Helibase
- Division Break
- Branch Break
- Drop Point
- Camp
- Staging Area
- Value at Risk
- Mobile Weather Unit
- Repeater
- Water Source
- Restricted Water Source
- Temporary Flight Restriction
- Fire Edge
- Contained Line
- Highway
- Arterial
- Collector
- Local
- BPA Transmission Lines
- Wildfire Daily Fire Perimeter
- Wilderness
- Open Water - Perennial
- Open Water - Intermittent
- PLSS Townships
- PLSS Sections
- National Forest Land

Middle Fork Complex
OR-WIF-210307

0 0.5 1 1.5 2 Miles