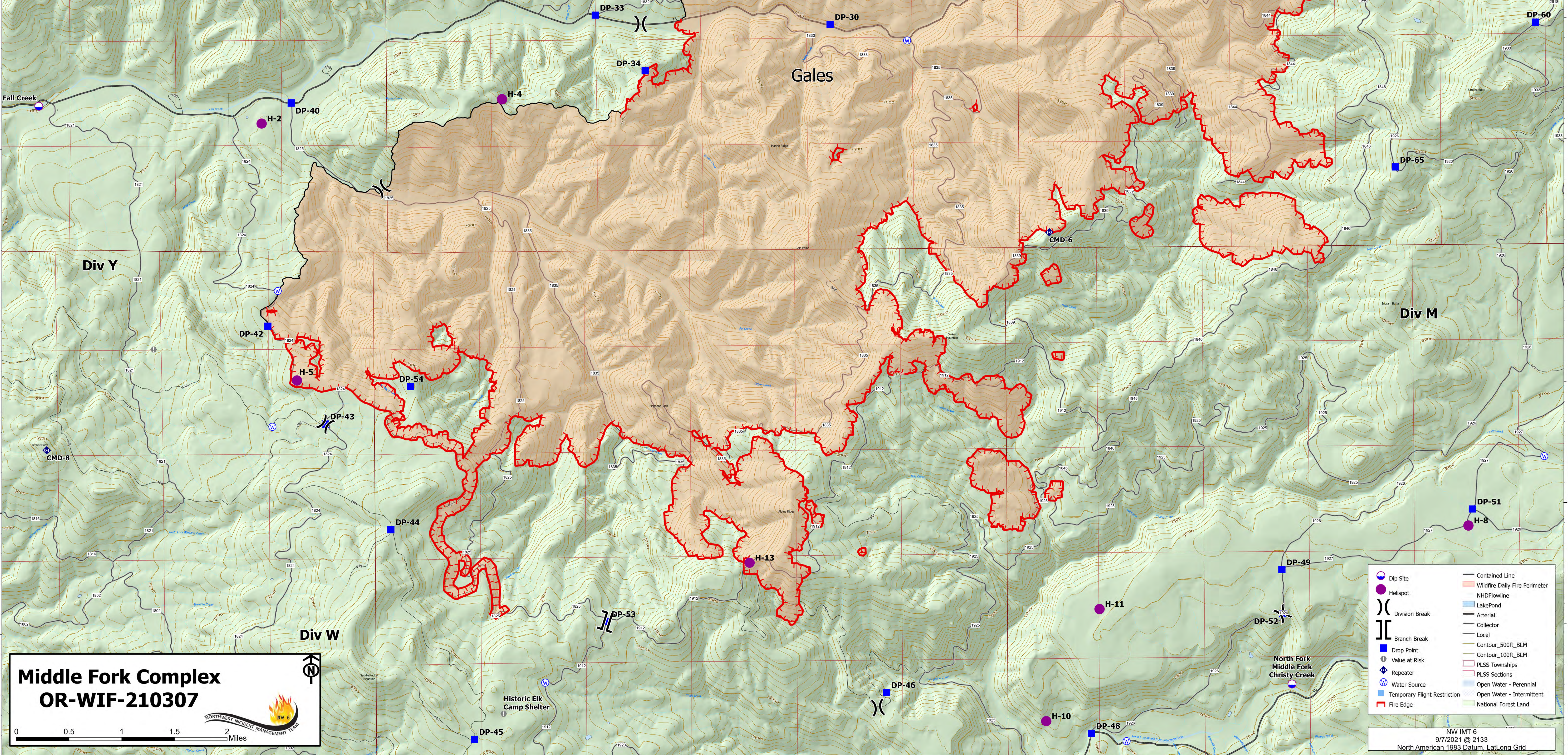


Incident Name	FC Point Type	Label	Latitude WGS84 DDM	Longitude WGS84 DDM
Middle Fork Complex	Drop Point	DP-40	43° 58.3705914' N	122° 31.47958140' W
Middle Fork Complex	Repeater	CMD-6	43° 57.264' N	122° 22.830' W
Middle Fork Complex	Drop Point	DP-30	43° 58.990' N	122° 25.317' W
Middle Fork Complex	Division Break		43° 57.659' N	122° 30.454' W
Middle Fork Complex	Division Break		43° 53.355' N	122° 34.827' W
Middle Fork Complex	Repeater	CMD-8	43° 55.517' N	122° 34.293' W
Middle Fork Complex	Drop Point	DP-20	43° 59.533' N	122° 22.554' W
Middle Fork Complex	Drop Point	DP-42	43° 56.531' N	122° 31.762' W
Middle Fork Complex	Water Source		43° 58.852' N	122° 24.440' W
Middle Fork Complex	Drop Point	DP-24	44° 00.852' N	122° 24.577' W
Middle Fork Complex	Drop Point	DP-33	43° 59.079' N	122° 27.999' W
Middle Fork Complex	Drop Point	DP-68	44° 00.239' N	122° 18.781' W
Middle Fork Complex	Drop Point	DP-10	44° 01.893' N	122° 22.770' W
Middle Fork Complex	Drop Point	DP-70	44° 01.429' N	122° 20.878' W
Middle Fork Complex	Division Break		43° 54.102' N	122° 20.201' W
Middle Fork Complex	Division Break		44° 01.186' N	122° 21.597' W
Middle Fork Complex	Division Break		43° 59.004' N	122° 27.480' W
Middle Fork Complex	Branch Break		43° 54.078' N	122° 27.911' W
Middle Fork Complex	Division Break		43° 55.721' N	122° 31.109' W
Middle Fork Complex	Helispot	H-3	44° 00.117' N	122° 24.767' W
Middle Fork Complex	Helispot	H-5	43° 56.883' N	122° 31.437' W
Middle Fork Complex	Drop Point	DP-51	43° 54.953' N	122° 18.026' W
Middle Fork Complex	Drop Point	DP-49	43° 54.465' N	122° 20.207' W
Middle Fork Complex	Drop Point	DP-48	43° 53.128' N	122° 22.392' W
Middle Fork Complex	Drop Point	DP-60	43° 58.962' N	122° 17.258' W
Middle Fork Complex	Value at Risk	Historic Elk Camp Shelter	43° 53.325' N	122° 29.095' W
Middle Fork Complex	Value at Risk	Historic Clark Creek Camp	43° 58.357' N	122° 34.854' W
Middle Fork Complex	Dip Site	Fall Creek	43° 58.355' N	122° 34.363' W
Middle Fork Complex	Helispot	H-11	43° 54.153' N	122° 22.289' W
Middle Fork Complex	Drop Point	DP-46	43° 53.476' N	122° 24.726' W
Middle Fork Complex	Drop Point	DP-52	43° 54.102' N	122° 20.201' W
Middle Fork Complex	Helispot	H-2	43° 58.202' N	122° 31.819' W
Middle Fork Complex	Helispot	H-4	43° 58.391' N	122° 29.070' W
Middle Fork Complex	Drop Point	DP-43	43° 55.721' N	122° 31.109' W
Middle Fork Complex	Drop Point	DP-45	43° 53.113' N	122° 29.430' W
Middle Fork Complex	Drop Point	DP-44	43° 54.846' N	122° 30.371' W
Middle Fork Complex	Drop Point	DP-53	43° 54.078' N	122° 27.911' W
Middle Fork Complex	Helispot	H-8	43° 54.816' N	122° 18.072' W
Middle Fork Complex	Water Source		43° 53.577' N	122° 28.619' W
Middle Fork Complex	Water Source		43° 55.701' N	122° 31.716' W
Middle Fork Complex	Water Source		43° 53.736' N	122° 32.036' W
Middle Fork Complex	Water Source		43° 55.383' N	122° 17.200' W
Middle Fork Complex	Helispot	H-6	44° 01.078' N	122° 24.483' W
Middle Fork Complex	Value at Risk		44° 01.099' N	122° 20.078' W
Middle Fork Complex	Water Source		43° 53.061' N	122° 21.993' W
Middle Fork Complex	Water Source		43° 56.821' N	122° 31.646' W
Middle Fork Complex	Helispot	H-10	43° 53.232' N	122° 22.907' W
Middle Fork Complex	Drop Point	DP-65	43° 57.780' N	122° 18.875' W
Middle Fork Complex	Helispot	H-13	43° 54.555' N	122° 26.279' W
Middle Fork Complex	Drop Point	DP-34	43° 58.618' N	122° 27.433' W
Middle Fork Complex	Dip Site	North Fork Middle Fork Christy Creek	43° 53.521' N	122° 20.102' W
Middle Fork Complex	Drop Point	DP-69	44° 02.350' N	122° 18.796' W
Middle Fork Complex	Drop Point	DP-54	43° 56.028' N	122° 30.138' W
Middle Fork Complex	Value at Risk			



Middle Fork Complex
OR-WIF-210307

0 0.5 1 1.5 2 Miles

- Dip Site
- Helispot
- Division Break
- Branch Break
- Drop Point
- Value at Risk
- Repeater
- Water Source
- Temporary Flight Restriction
- Fire Edge
- Contained Line
- Wildfire Daily Fire Perimeter
- NHDFlowline
- Lake/Pond
- Arterial
- Collector
- Local
- Contour_500ft_BLM
- Contour_100ft_BLM
- PLSS Townships
- PLSS Sections
- Open Water - Perennial
- Open Water - Intermittent
- National Forest Land

NW IMT 6
9/7/2021 @ 2133
North American 1983 Datum, Lat/Long Grid

