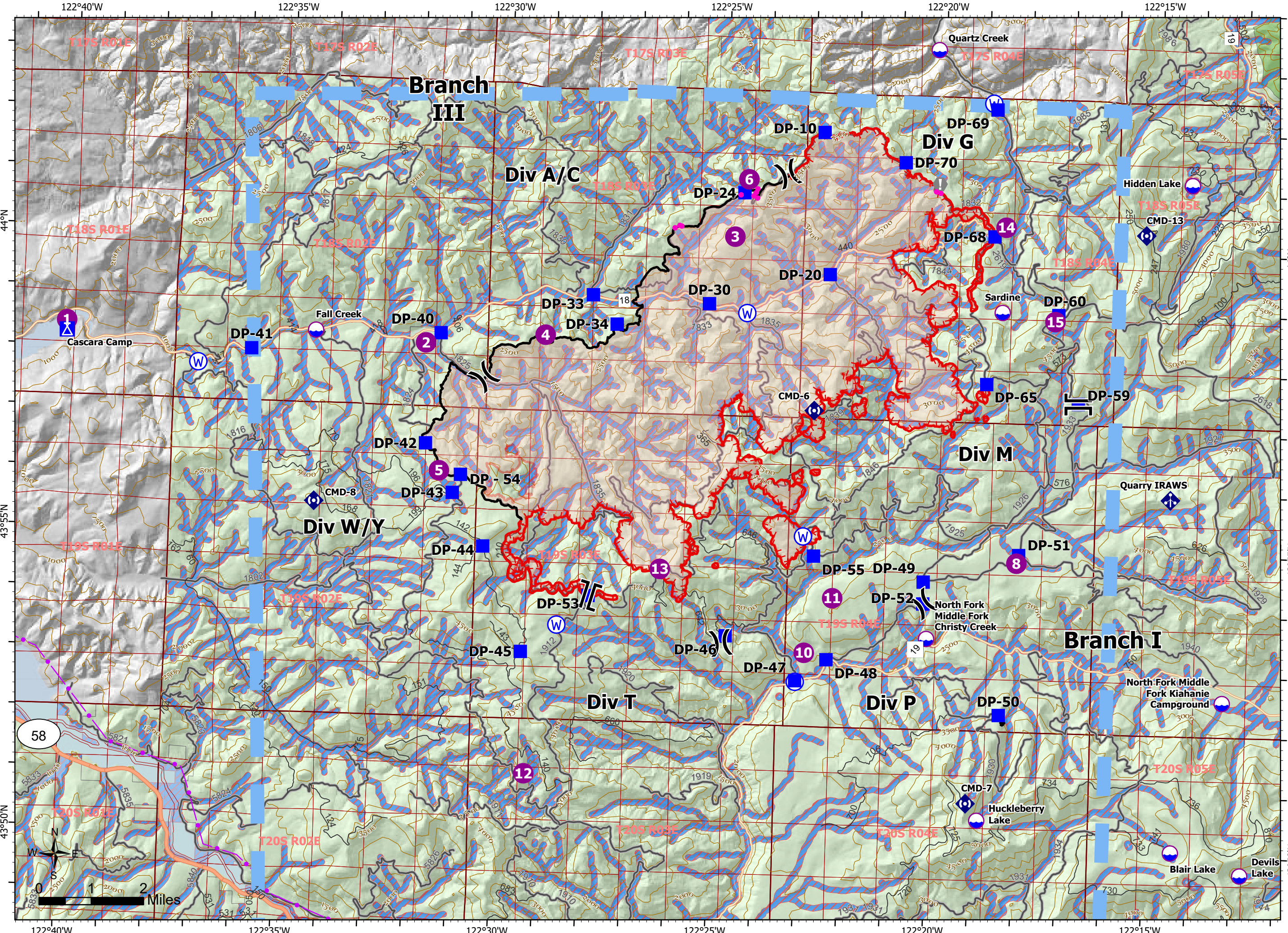


Pilot Map

Middle Fork Complex
OR-WIF-210307

09/13/2021 - 24 hr
Gales Fire: 27,066 acres
at 09/12/2021 @ 1615



- Dip Site
- Helispot
- Division Break
- Branch Break
- Drop Point
- Camp
- Value at Risk
- Mobile Weather Unit
- Repeater
- Water Source
- BPA Transmission Lines
- Highway
- Arterial
- Collector
- Local
- Contour (500')
- Open Water - Perennial
- Open Water - Intermittent
- Temporary Flight Restriction
- Fire Edge
- Contained Line
- Wildfire Daily Fire Perimeter
- National Forest Land
- Retardant Avoidant Point
- Retardant Avoidance
- Highway
- Arterial
- Collector
- Local

Acres from IR
Map Created: 9/12/2021 @ 1934
North American 1983
Lat/Long Grid
Label Tic: 5min
Large Tic: 1min
Small Tic: 10sec



FC Point Type	Label	Latitude WGS84 DDM	Longitude WGS84 DDM
Camp		43° 44.317' N	122° 27.568' W
Restricted Water Source		43° 44.259' N	122° 26.530' W
Water Source		43° 58.852' N	122° 24.440' W
Water Source		43° 43.121' N	122° 19.874' W
Water Source		43° 53.577' N	122° 28.619' W
Water Source		43° 57.767' N	122° 37.054' W
Water Source		44° 02.453' N	122° 18.886' W
Water Source		43° 52.746' N	122° 23.094' W
Water Source		43° 55.166' N	122° 23.004' W
Helispot	1	43° 58.395' N	122° 40.107' W
Helispot	10	43° 53.232' N	122° 22.907' W
Helispot	11	43° 54.153' N	122° 22.289' W
Helispot	12	43° 51.088' N	122° 29.274' W
Helispot	13	43° 54.555' N	122° 26.279' W
Helispot	14	44° 00.397' N	122° 18.520' W
Helispot	15	43° 58.851' N	122° 17.332' W
Helispot	2	43° 58.202' N	122° 31.819' W
Helispot	3	44° 00.117' N	122° 24.767' W
Helispot	4	43° 58.391' N	122° 29.070' W
Helispot	5	43° 56.083' N	122° 31.433' W
Helispot	6	44° 01.078' N	122° 24.483' W
Helispot	8	43° 54.816' N	122° 18.073' W
Helispot	9	43° 40.508' N	122° 32.568' W
Dip Site	Blair Lake	43° 50.070' N	122° 14.354' W
Camp	Cascara Camp	43° 58.233' N	122° 40.097' W
Repeater	CMD-13	44° 00.325' N	122° 15.283' W
Repeater	CMD-6	43° 57.264' N	122° 22.830' W
Repeater	CMD-7	43° 50.801' N	122° 19.095' W
Repeater	CMD-8	43° 55.517' N	122° 34.293' W
Repeater	CMD-9	43° 46.565' N	122° 24.226' W
Dip Site	Devils Lake	43° 49.718' N	122° 12.746' W
Drop Point	DP-10	44° 01.893' N	122° 22.769' W
Drop Point	DP-100	43° 44.757' N	122° 24.855' W
Drop Point	DP-101	43° 45.116' N	122° 25.606' W
Drop Point	DP-102	43° 45.514' N	122° 25.004' W
Drop Point	DP-103	43° 45.077' N	122° 24.811' W
Drop Point	DP-105	43° 45.542' N	122° 23.177' W
Drop Point	DP-106	43° 46.022' N	122° 24.482' W
Drop Point	DP-120	43° 47.898' N	122° 21.805' W
Drop Point	DP-20	43° 59.533' N	122° 22.554' W
Drop Point	DP-24	44° 00.852' N	122° 24.576' W
Drop Point	DP-30	43° 58.990' N	122° 25.317' W
Drop Point	DP-33	43° 59.079' N	122° 27.999' W
Drop Point	DP-34	43° 58.618' N	122° 27.433' W
Drop Point	DP-40	43° 58.370' N	122° 31.479' W
Drop Point	DP-41	43° 58.020' N	122° 35.835' W

FC Point Type	Label	Latitude WGS84 DDM	Longitude WGS84 DDM
Drop Point	DP-42	43° 56.531' N	122° 31.761' W
Drop Point	DP-43	43° 55.721' N	122° 31.109' W
Drop Point	DP-44	43° 54.846' N	122° 30.371' W
Drop Point	DP-45	43° 53.113' N	122° 29.430' W
Drop Point	DP-46	43° 53.476' N	122° 24.726' W
Drop Point	DP-47	43° 52.763' N	122° 23.098' W
Drop Point	DP-48	43° 53.128' N	122° 22.392' W
Drop Point	DP-49	43° 54.465' N	122° 20.207' W
Drop Point	DP-50	43° 52.283' N	122° 18.391' W
Drop Point	DP-51	43° 54.953' N	122° 18.026' W
Drop Point	DP-52	43° 54.102' N	122° 20.200' W
Drop Point	DP-53	43° 54.078' N	122° 27.911' W
Drop Point	DP-55	43° 54.844' N	122° 22.749' W
Drop Point	DP-59	43° 57.237' N	122° 16.726' W
Drop Point	DP-60	43° 58.962' N	122° 17.257' W
Drop Point	DP-65	43° 57.780' N	122° 18.874' W
Drop Point	DP-68	44° 00.239' N	122° 18.780' W
Drop Point	DP-69	44° 02.350' N	122° 18.796' W
Drop Point	DP-70	44° 01.429' N	122° 20.878' W
Drop Point	DP-72	43° 46.753' N	122° 21.478' W
Drop Point	DP-73	43° 46.964' N	122° 20.508' W
Drop Point	DP-74	43° 46.461' N	122° 21.362' W
Drop Point	DP-75	43° 46.318' N	122° 20.278' W
Drop Point	DP-76	43° 45.621' N	122° 21.371' W
Drop Point	DP-80	43° 45.012' N	122° 21.222' W
Drop Point	DP-89	43° 44.361' N	122° 21.660' W
Drop Point	DP-90	43° 39.967' N	122° 32.794' W
Drop Point	DP-91	43° 43.021' N	122° 19.659' W
Drop Point	DP-94	43° 43.839' N	122° 25.221' W
Drop Point	DP-95	43° 44.286' N	122° 25.377' W
Drop Point	DP - 54	43° 56.026' N	122° 30.933' W
Dip Site	Fall Creek	43° 58.355' N	122° 34.363' W
Staging Area	Flat Creek Staging	43° 44.944' N	122° 25.577' W
Dip Site	Hidden Lake	44° 01.175' N	122° 14.249' W
Camp	Hills Creek Camp	43° 42.901' N	122° 25.460' W
Dip Site	Hills Creek Reservoir	43° 44.579' N	122° 26.933' W
Dip Site	Huckleberry Lake	43° 50.522' N	122° 18.827' W
Dip Site	Needle Creek	43° 45.690' N	122° 22.460' W
Dip Site	North Fork Middle Fork Christy Creek	43° 53.521' N	122° 20.102' W
Dip Site	North Fork Middle Fork Kiahanie Campground	43° 52.578' N	122° 13.256' W
Helibase	Oakridge	43° 45.191' N	122° 29.991' W
Mobile Weather Unit	Quarry IRAWs	43° 55.934' N	122° 14.568' W
Dip Site	Quartz Creek	44° 03.317' N	122° 20.179' W
Dip Site	Salmon Creek	43° 44.890' N	122° 25.810' W
Dip Site	Sardine	43° 58.978' N	122° 18.553' W
Camp	Winberry Support Camp	43° 56.368' N	122° 44.963' W