

122°33'W 122°32'W 122°31'W 122°30'W 122°29'W 122°28'W 122°27'W 122°26'W 122°25'W 122°24'W 122°23'W 122°22'W 122°21'W 122°20'W

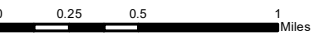


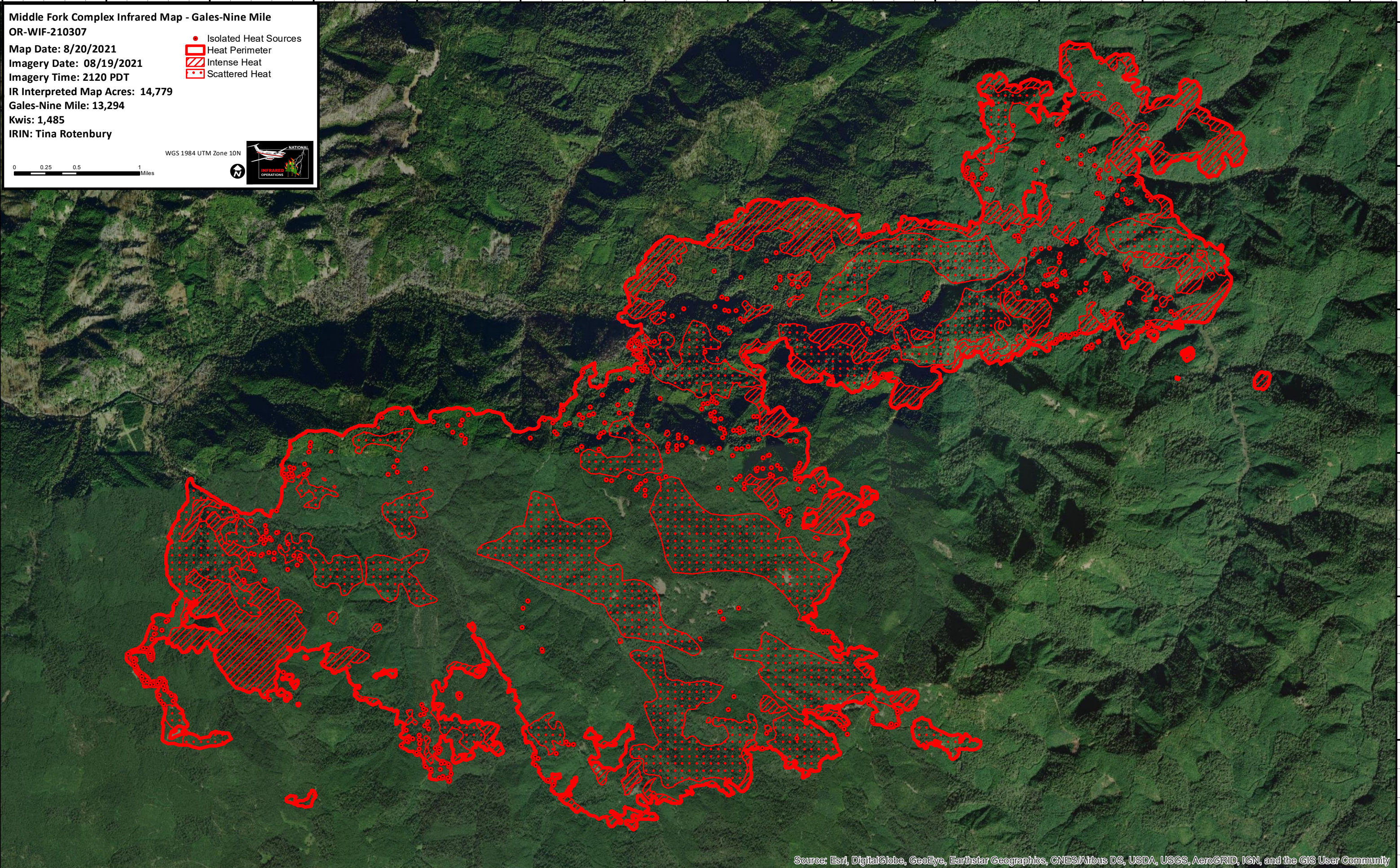
44°1'N
44°0'N
43°59'N
43°58'N
43°57'N
43°56'N

44°1'N
44°0'N
43°59'N
43°58'N
43°57'N
43°56'N

Middle Fork Complex Infrared Map - Gales-Nine Mile
OR-WIF-210307
Map Date: 8/20/2021
Imagery Date: 08/19/2021
Imagery Time: 2120 PDT
IR Interpreted Map Acres: 14,779
Gales-Nine Mile: 13,294
Kwis: 1,485
IRIN: Tina Rotenbury

● Isolated Heat Sources
 □ Heat Perimeter
 ▨ Intense Heat
 ▩ Scattered Heat

WGS 1984 UTM Zone 10N

Source: Esri, DigitalGlobe, GeoEye, Earthstar Geographics, CNES/Airbus DS, USDA, USGS, AeroGRID, IGN, and the GIS User Community

122°33'W 122°32'W 122°31'W 122°30'W 122°29'W 122°28'W 122°27'W 122°26'W 122°25'W 122°24'W 122°23'W 122°22'W 122°21'W 122°20'W