


122°25'W 122°24'W 122°23'W 122°22'W 122°21'W 122°20'W 122°19'W





Middle Fork Complex Infrared Map - Kwis
OR-WIF-210307
Map Date: 8/21/2021
Imagery Date: 08/20/2021
Imagery Time: 2045 PDT
IR Interpreted Map Acres: 15,081
Gales-NineMile: 13,597
Kwis: 1,485

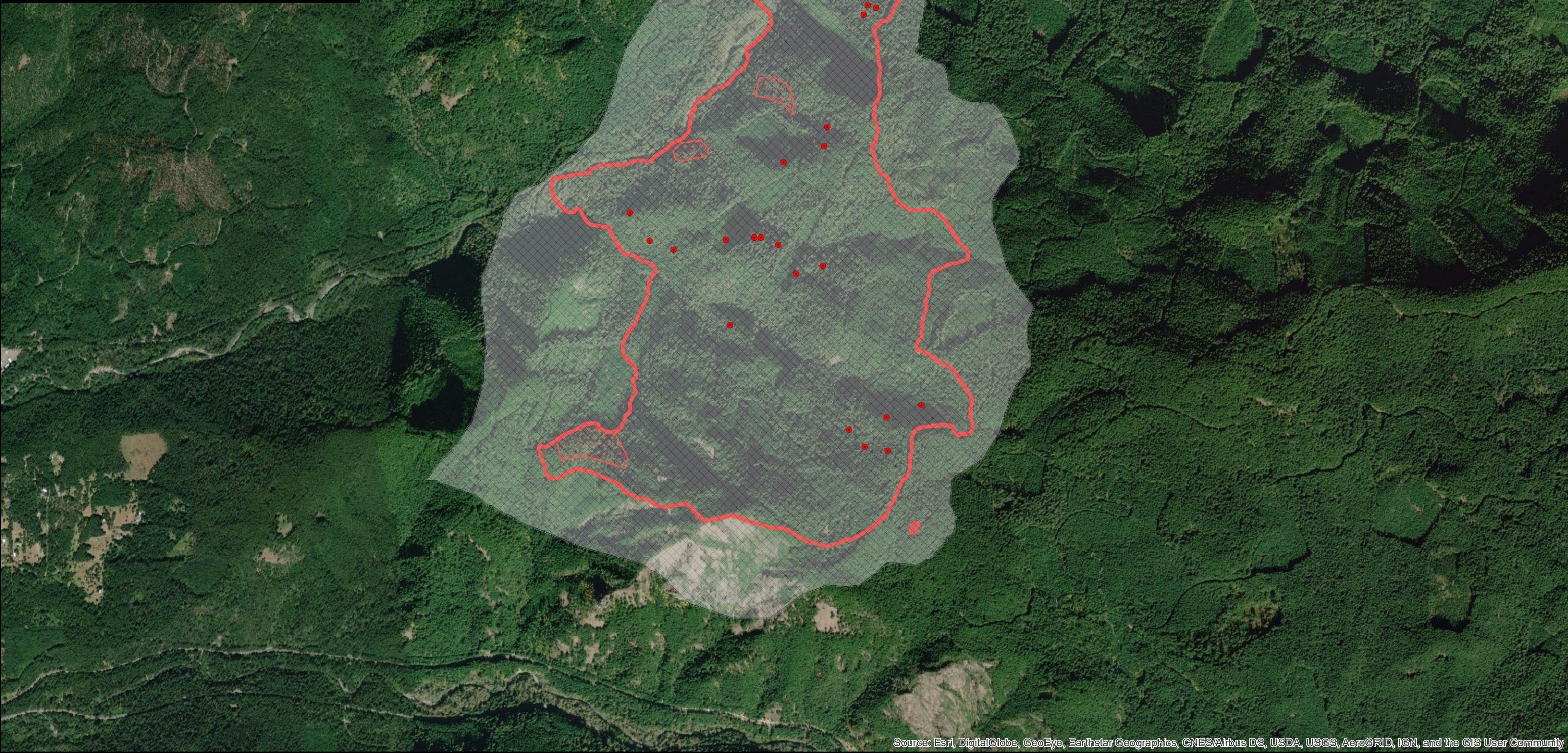
IRIN: Tina Rotenbury

WGS 1984 UTM Zone 10N

0 0.25 0.5 Miles



-  Isolated Heat Sources
-  Heat Perimeter
-  Intense Heat
-  Scattered Heat



Source: Esri, DigitalGlobe, GeoEye, Earthstar Geographics, CNES/Airbus DS, USDA, USGS, AeroGRID, IGN, and the GIS User Community

122°25'W 122°24'W 122°23'W 122°22'W 122°21'W 122°20'W 122°19'W

43°46'N
43°45'N
43°44'N

43°46'N
43°45'N
43°44'N