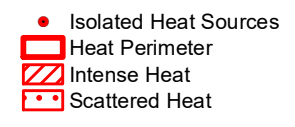



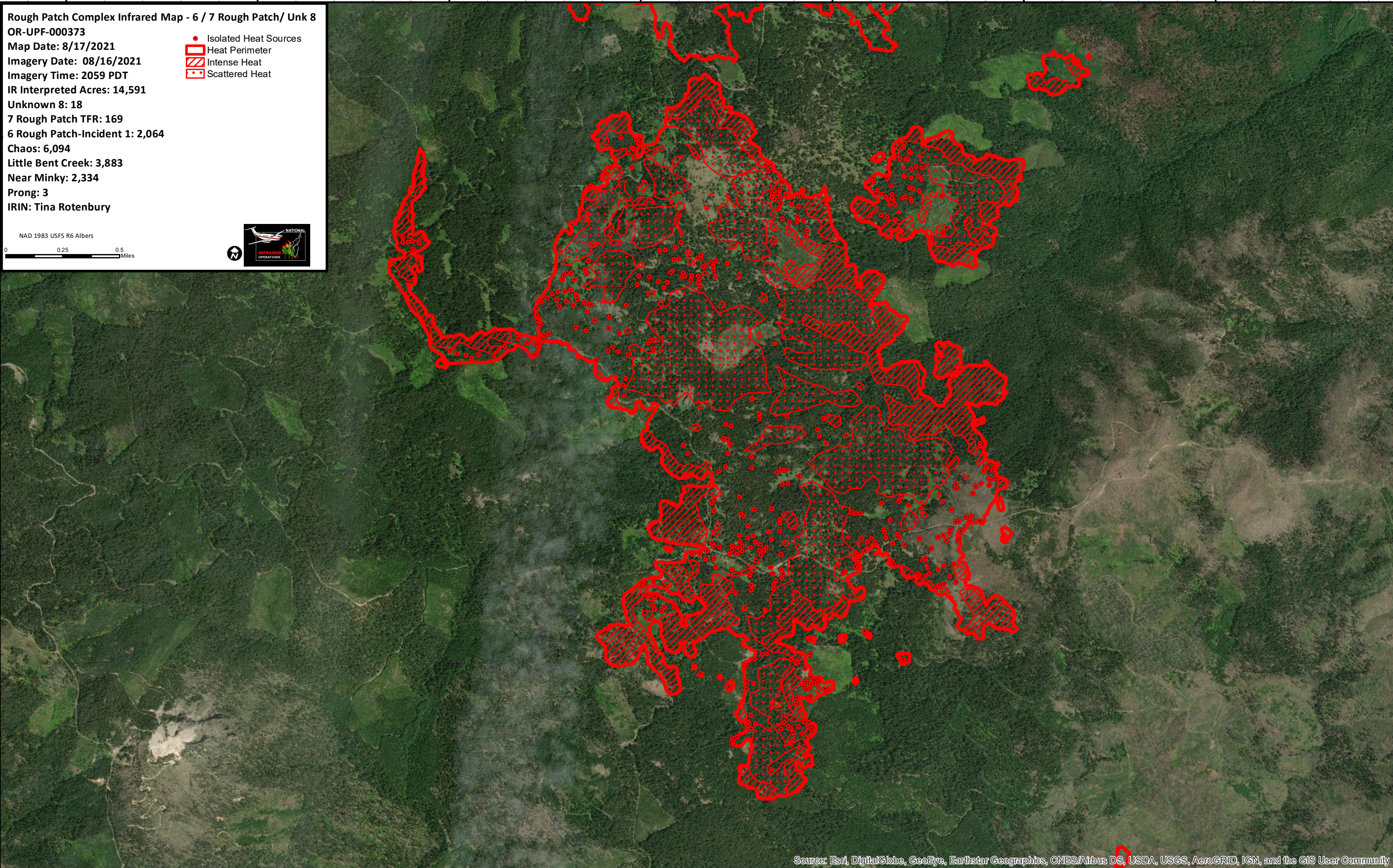
122°41'W 122°40'W 122°39'W 122°38'W 122°37'W 122°36'W 122°35'W

Rough Patch Complex Infrared Map - 6 / 7 Rough Patch/ Unk 8
OR-UPF-000373
Map Date: 8/17/2021
Imagery Date: 08/16/2021
Imagery Time: 2059 PDT
IR Interpreted Acres: 14,591
Unknown 8: 18
7 Rough Patch TFR: 169
6 Rough Patch-Incident 1: 2,064
Chaos: 6,094
Little Bent Creek: 3,883
Near Minky: 2,334
Prong: 3
IRIN: Tina Rotenbury



NAD 1983 USFS R6 Albers

0 0.25 0.5 Miles

122°41'W 122°40'W 122°39'W 122°38'W 122°37'W 122°36'W 122°35'W 122°34'W

Source: Esri, DigitalGlobe, GeoEye, Earthstar Geographics, CNES/Airbus DS, USDA, USGS, AeroGRID, IGN, and the GIS User Community

43°12'N

43°11'N

43°10'N

43°12'N

43°11'N

43°10'N