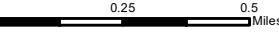




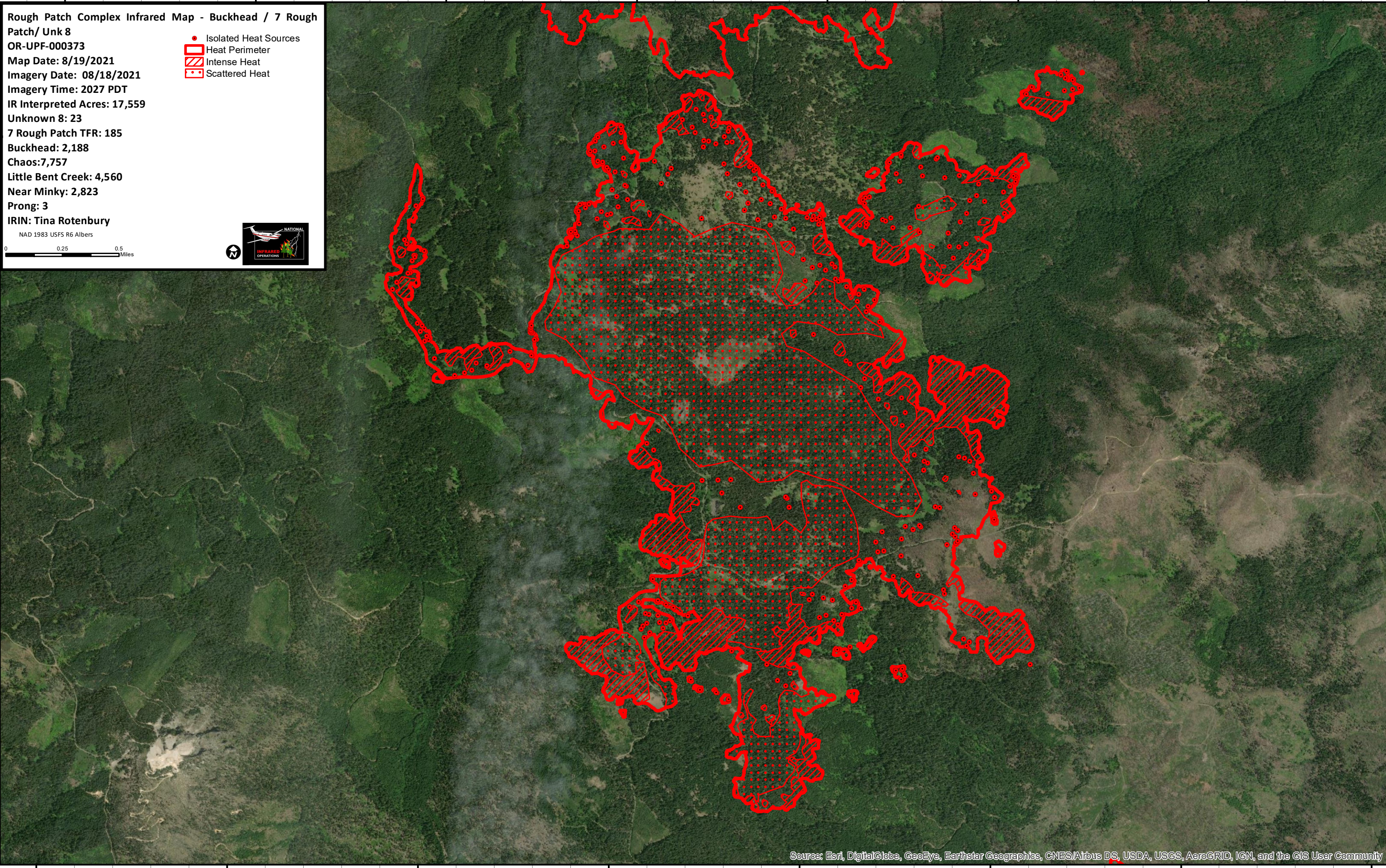
122°41'W 122°40'W 122°39'W 122°38'W 122°37'W 122°36'W 122°35'W

Rough Patch Complex Infrared Map - Buckhead / 7 Rough Patch/ Unk 8
OR-UPF-000373
Map Date: 8/19/2021
Imagery Date: 08/18/2021
Imagery Time: 2027 PDT
IR Interpreted Acres: 17,559
Unknown 8: 23
7 Rough Patch TFR: 185
Buckhead: 2,188
Chaos: 7,757
Little Bent Creek: 4,560
Near Minky: 2,823
Prong: 3
IRIN: Tina Rotenbury

NAD 1983 USFS R6 Albers

- Isolated Heat Sources
- Heat Perimeter
- Intense Heat
- Scattered Heat



122°41'W 122°40'W 122°39'W 122°38'W 122°37'W 122°36'W 122°35'W 122°34'W

Source: Esri, DigitalGlobe, GeoEye, Earthstar Geographics, CNES/Airbus DS, USDA, USGS, AeroGRID, IGN, and the GIS User Community

43°12'N
43°11'N
43°10'N

43°12'N
43°11'N
43°10'N