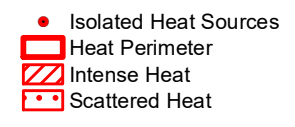



122°39'W 122°38'W 122°37'W 122°36'W 122°35'W 122°34'W 122°33'W 122°32'W 122°31'W 122°30'W

Rough Patch Complex Infrared Map- Little Bend
OR-UPF-000373
Map Date: 8/19/2021
Imagery Date: 08/18/2021
Imagery Time: 2027 PDT
IR Interpreted Acres: 17,559
Near Minky: 2,823: Prong: 3
Little Bend: 4,560
Chilcoot: 18
Chaos: 7,757
Unk 8: 23
7 Rough Patch TFR: 185
Buckhead: 2,187
IRIN: Tina Rotenbury



NAD 1983 USFS R6 Albers

0 0.25 0.5 Miles



43°28'N

43°27'N

43°26'N

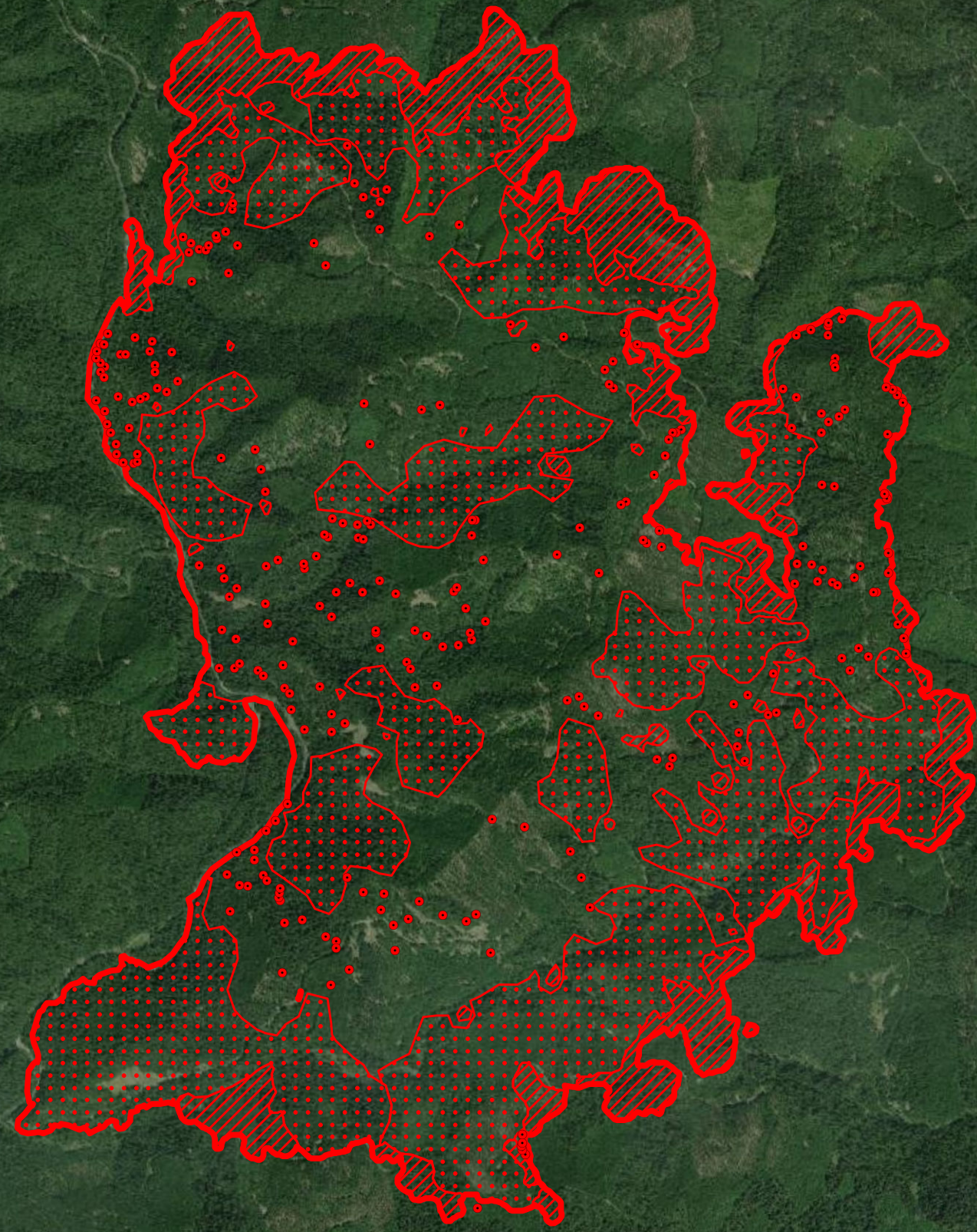
43°25'N

43°28'N

43°27'N

43°26'N

43°25'N



Source: Esri, DigitalGlobe, GeoEye, Earthstar Geographics, CNES/Airbus DS, USDA, USGS, AeroGRID, IGN, and the GIS User Community

122°38'W 122°37'W 122°36'W 122°35'W 122°34'W 122°33'W 122°32'W 122°31'W 122°30'W