

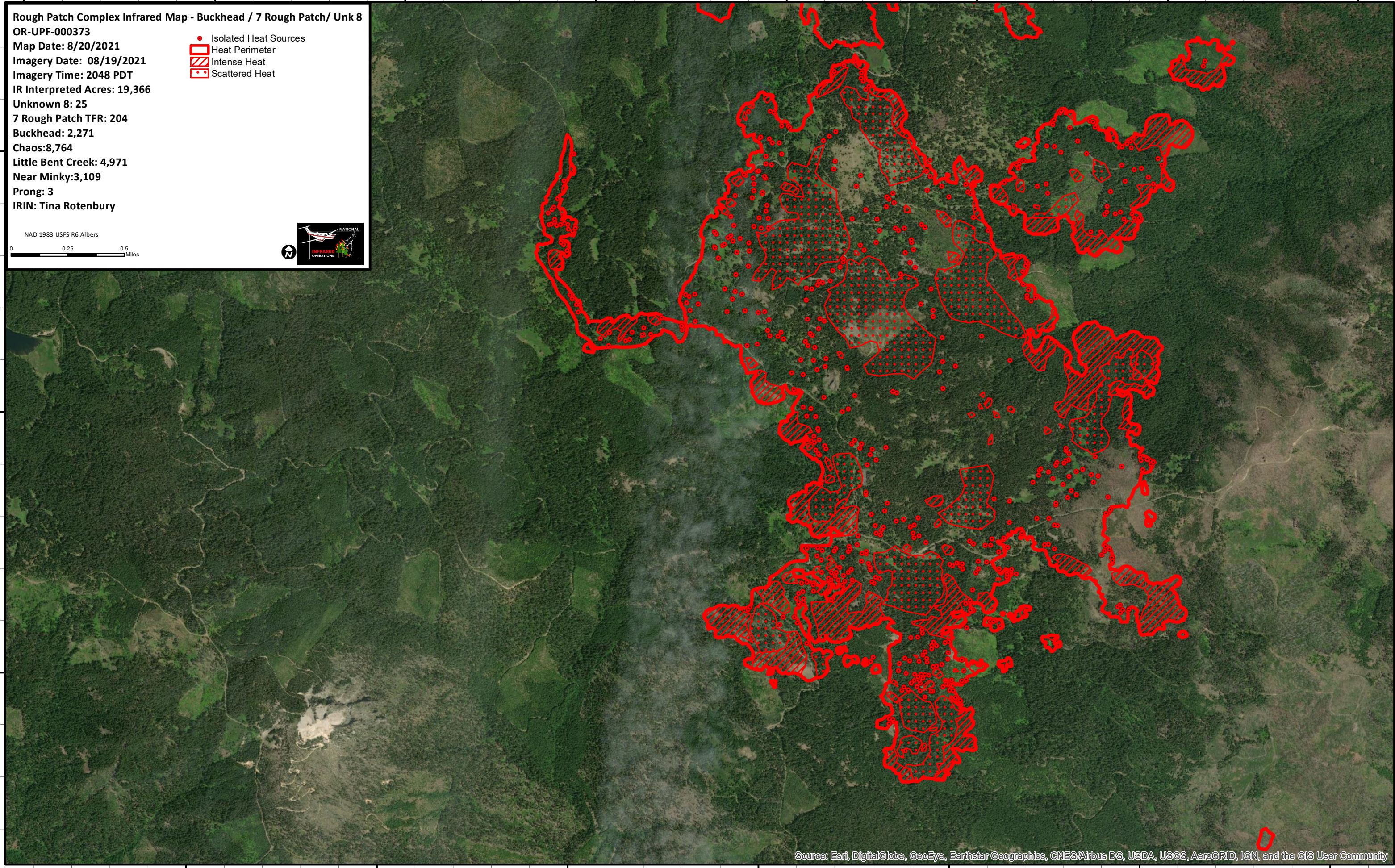
122°42'W 122°41'W 122°40'W 122°39'W 122°38'W 122°37'W 122°36'W 122°35'W

Rough Patch Complex Infrared Map - Buckhead / 7 Rough Patch/ Unk 8
OR-UPF-000373
Map Date: 8/20/2021
Imagery Date: 08/19/2021
Imagery Time: 2048 PDT
IR Interpreted Acres: 19,366
Unknown 8: 25
7 Rough Patch TFR: 204
Buckhead: 2,271
Chaos: 8,764
Little Bent Creek: 4,971
Near Minky: 3,109
Prong: 3
IRIN: Tina Rotenbury

- Isolated Heat Sources
- Heat Perimeter
- ▨ Intense Heat
- Scattered Heat

NAD 1983 USFS R6 Albers





43°12'N

43°11'N

43°10'N

43°12'N

43°11'N

43°10'N

Source: Esri, DigitalGlobe, GeoEye, Earthstar Geographics, CNES/Airbus DS, USDA, USGS, AeroGRID, IGN, and the GIS User Community

122°41'W 122°40'W 122°39'W 122°38'W 122°37'W 122°36'W 122°35'W