

122°41'W

122°40'W

122°39'W

122°38'W

122°37'W

122°36'W

122°35'W

43°13'N

43°12'N

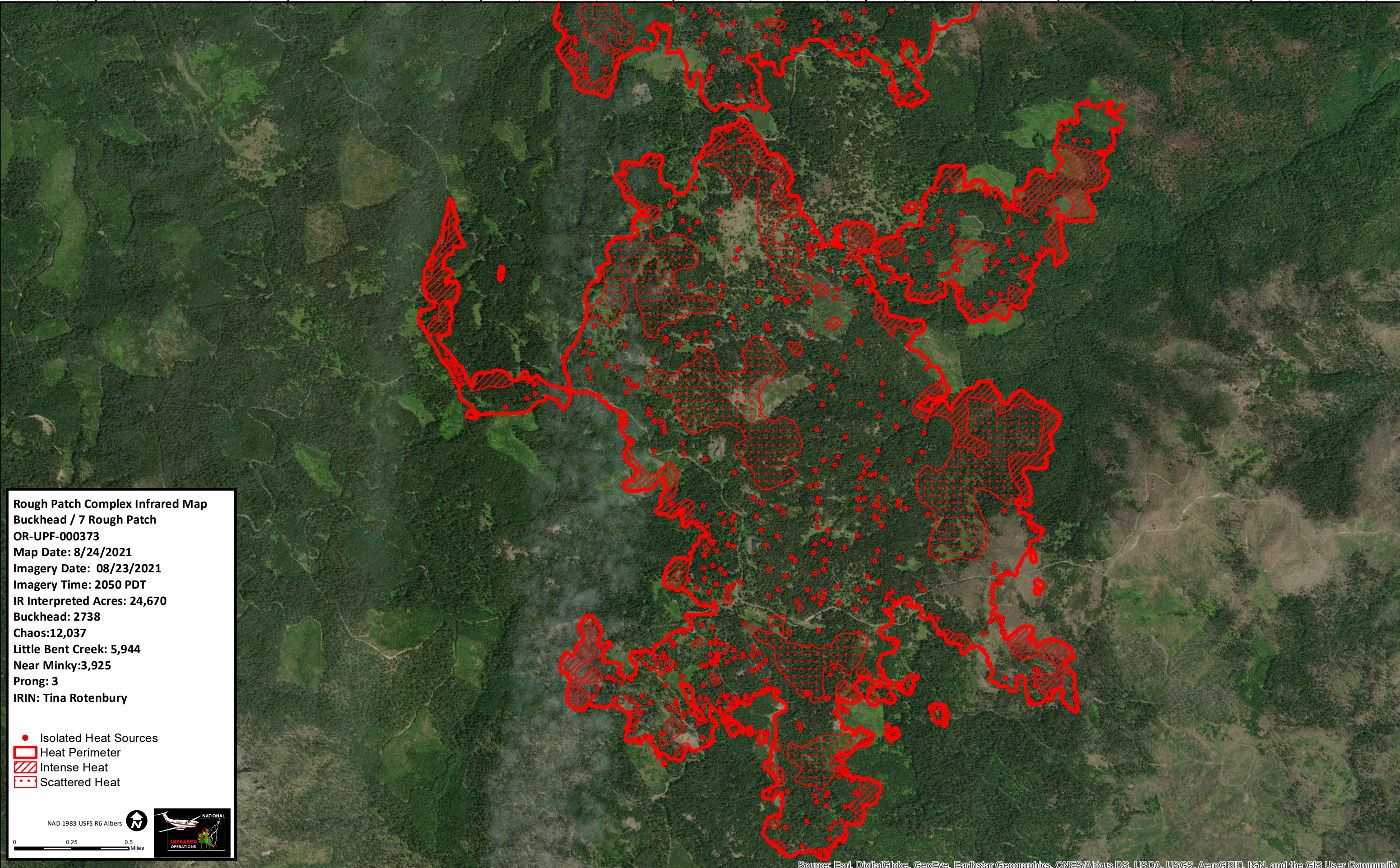
43°11'N

43°10'N

43°12'N

43°11'N

43°10'N



**Rough Patch Complex Infrared Map**  
**Buckhead / 7 Rough Patch**  
**OR-UPF-000373**  
**Map Date: 8/24/2021**  
**Imagery Date: 08/23/2021**  
**Imagery Time: 2050 PDT**  
**IR Interpreted Acres: 24,670**  
**Buckhead: 2738**  
**Chaos:12,037**  
**Little Bent Creek: 5,944**  
**Near Minky:3,925**  
**Prong: 3**  
**IRIN: Tina Rotenbury**

- Isolated Heat Sources
- Heat Perimeter
- Intense Heat
- Scattered Heat

NAD 1983 USFS R6 Albers

0 0.25 0.5 Miles

Source: Esri, DigitalGlobe, GeoEye, Earthstar Geographics, CNES/Airbus DS, USDA, USGS, AeroGRID, IGN, and the GIS User Community

122°41'W

122°40'W

122°39'W

122°38'W

122°37'W

122°36'W

122°35'W