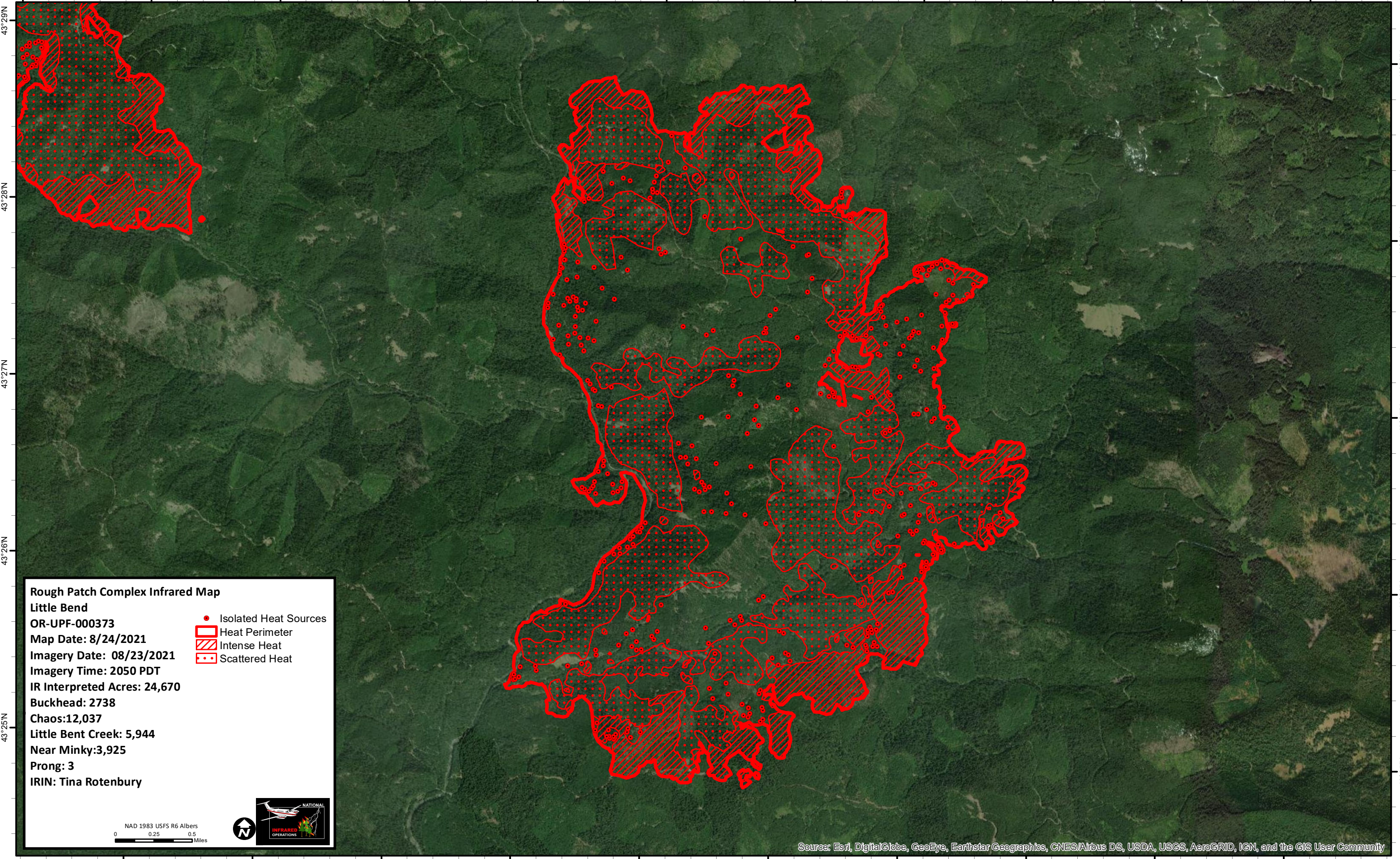


122°40'W 122°39'W 122°38'W 122°37'W 122°36'W 122°35'W 122°34'W 122°33'W 122°32'W 122°31'W 122°30'W



43°29'N
43°28'N
43°27'N
43°26'N
43°25'N

43°29'N
43°28'N
43°27'N
43°26'N
43°25'N

Rough Patch Complex Infrared Map
Little Bend
OR-UPF-000373
Map Date: 8/24/2021
Imagery Date: 08/23/2021
Imagery Time: 2050 PDT
IR Interpreted Acres: 24,670
Buckhead: 2738
Chaos:12,037
Little Bent Creek: 5,944
Near Minky:3,925
Prong: 3
IRIN: Tina Rotenbury

- Isolated Heat Sources
- Heat Perimeter
- Intense Heat
- Scattered Heat

NAD 1983 USFS R6 Albers
0 0.25 0.5 Miles

Source: Esri, DigitalGlobe, GeoEye, Earthstar Geographics, CNES/Airbus DS, USDA, USGS, AeroGRID, IGN, and the GIS User Community

122°39'W 122°38'W 122°37'W 122°36'W 122°35'W 122°34'W 122°33'W 122°32'W 122°31'W 122°30'W