


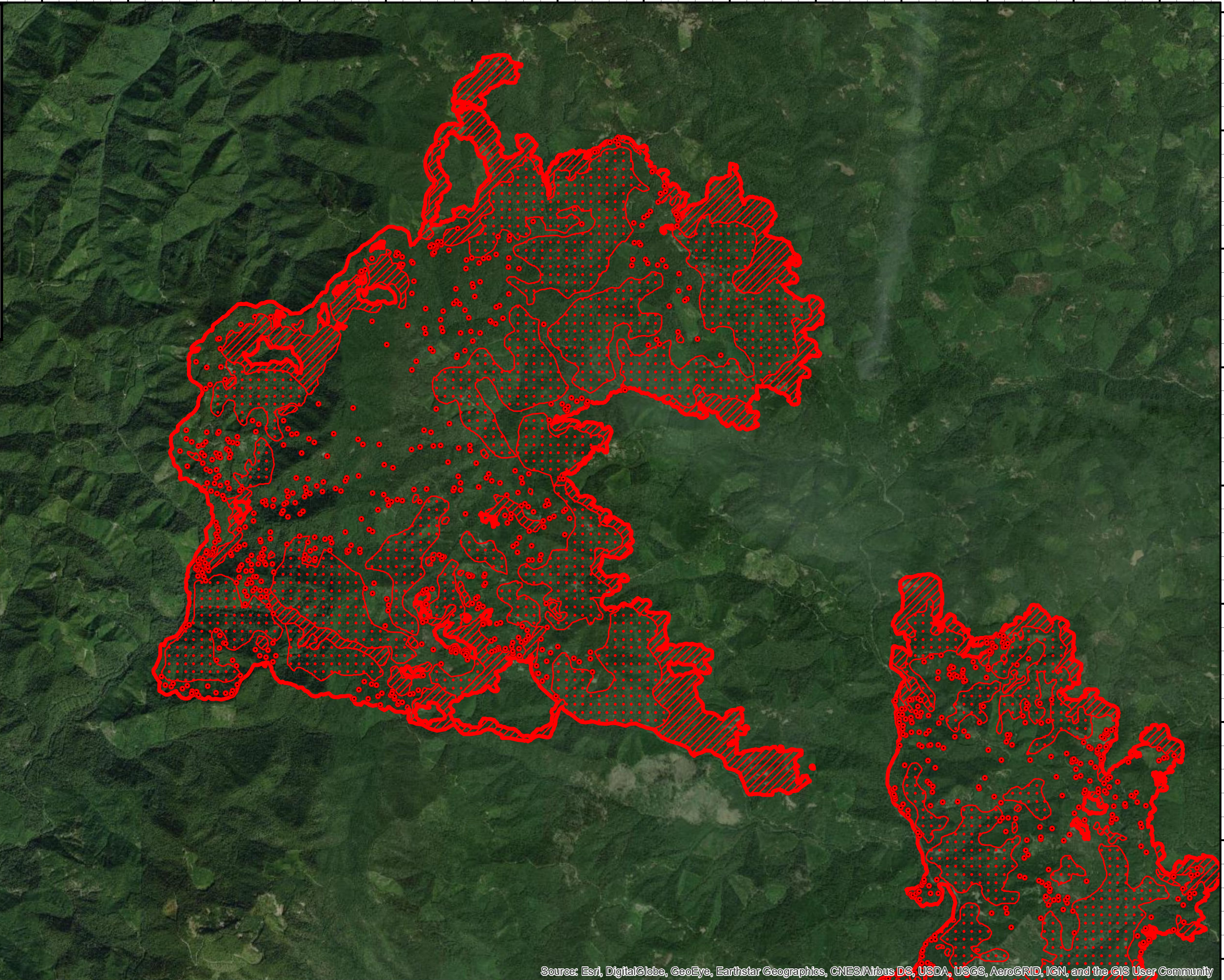
122°50'W 122°49'W 122°48'W 122°47'W 122°46'W 122°45'W 122°44'W 122°43'W 122°42'W 122°41'W 122°40'W 122°39'W 122°38'W 122°37'W 122°36'W 122°35'W 122°34'W 122°33'W

**Rough Patch Complex Infrared Map**  
**Chaos**  
**OR-UPF-000373**  
**Map Date: 8/28/2021**  
**Imagery Date: 08/27/2021**  
**Imagery Time: 2137PDT**  
**IR Interpreted Acres: 29,745**  
**Buckhead: 3,226**  
**Chaos: 15,301**  
**Little Bent Creek: 6,573**  
**Near Minky: 4,641**  
**Prong: 3**  
**IRIN: Tina Rotenbury**

- Isolated Heat Sources
- ◆ Possible Isolated Heat Sources
- ▭ Heat Perimeter
- ▨ Intense Heat
- ▩ Scattered Heat
- ⊠ Cloud Cover

NAD 1983 USFS R6 Albers

0 0.25 0.5 1 1.5 Miles

Source: Esri, DigitalGlobe, GeoEye, Earthstar Geographics, CNES/Airbus DS, USDA, USGS, AeroGRID, IGN, and the GIS User Community

122°50'W 122°49'W 122°48'W 122°47'W 122°46'W 122°45'W 122°44'W 122°43'W 122°42'W 122°41'W 122°40'W 122°39'W 122°38'W 122°37'W 122°36'W 122°35'W 122°34'W 122°33'W 122°32'W

43°33'N  
43°32'N  
43°31'N  
43°30'N  
43°29'N  
43°28'N  
43°27'N  
43°26'N

43°34'N  
43°33'N  
43°32'N  
43°31'N  
43°30'N  
43°29'N  
43°28'N  
43°27'N  
43°26'N