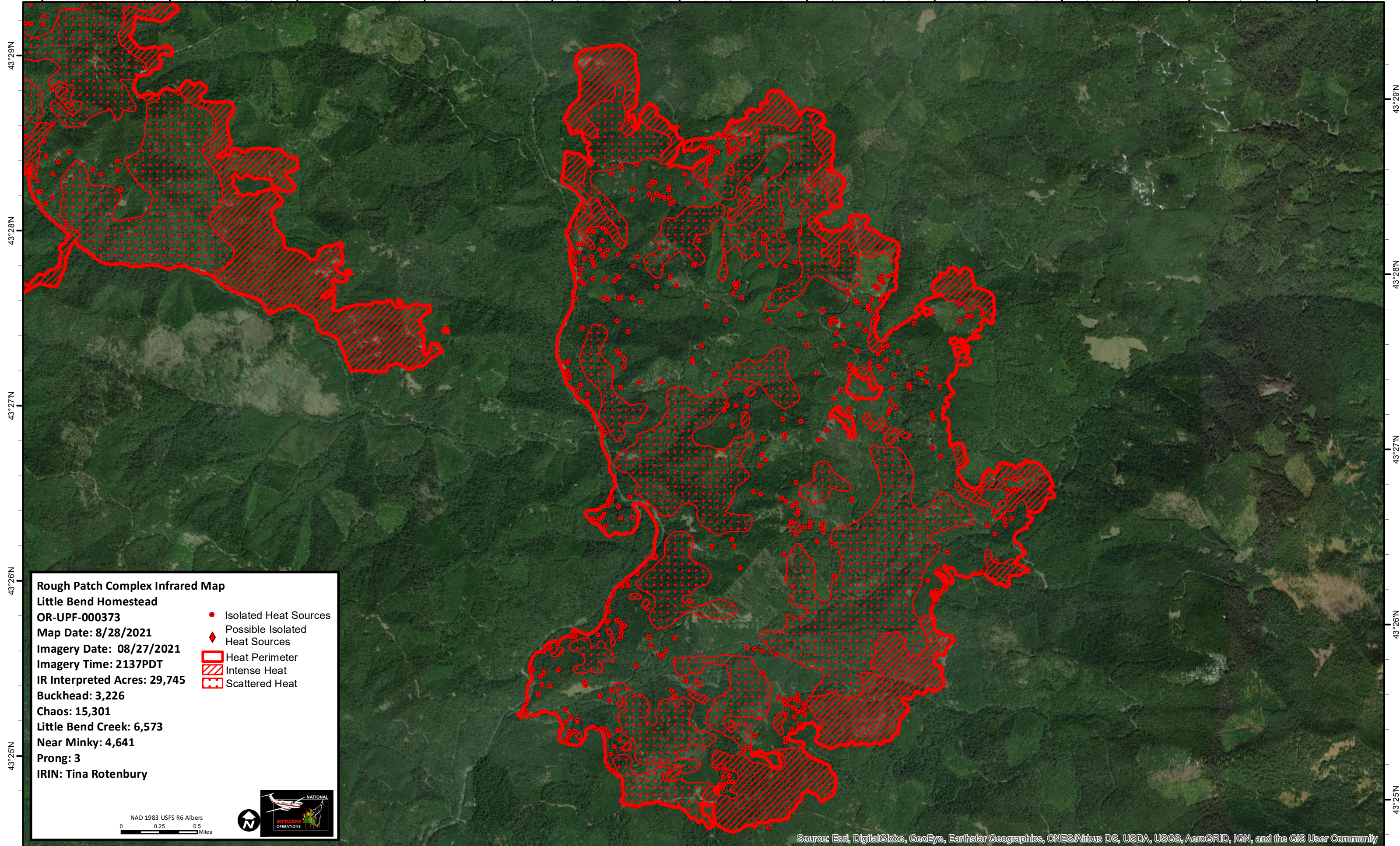


122°40'W 122°39'W 122°38'W 122°37'W 122°36'W 122°35'W 122°34'W 122°33'W 122°32'W 122°31'W 122°30'W



43°29'N  
43°28'N  
43°27'N  
43°26'N  
43°25'N

43°29'N  
43°28'N  
43°27'N  
43°26'N  
43°25'N

**Rough Patch Complex Infrared Map**  
**Little Bend Homestead**  
**OR-UPF-000373**  
**Map Date: 8/28/2021**  
**Imagery Date: 08/27/2021**  
**Imagery Time: 2137PDT**  
**IR Interpreted Acres: 29,745**  
**Buckhead: 3,226**  
**Chaos: 15,301**  
**Little Bend Creek: 6,573**  
**Near Minky: 4,641**  
**Prong: 3**  
**IRIN: Tina Rotenbury**

- Isolated Heat Sources
- ◆ Possible Isolated Heat Sources
- Heat Perimeter
- Intense Heat
- Scattered Heat

NAD 1983 USFS R6 Albers  
 0 0.25 0.5 Miles

Source: Esri, DigitalGlobe, GeoEye, Earthstar Geographics, CNES/Airbus DS, USDA, USGS, AeroGRID, IGN, and the GIS User Community

122°39'W 122°38'W 122°37'W 122°36'W 122°35'W 122°34'W 122°33'W 122°32'W 122°31'W 122°30'W