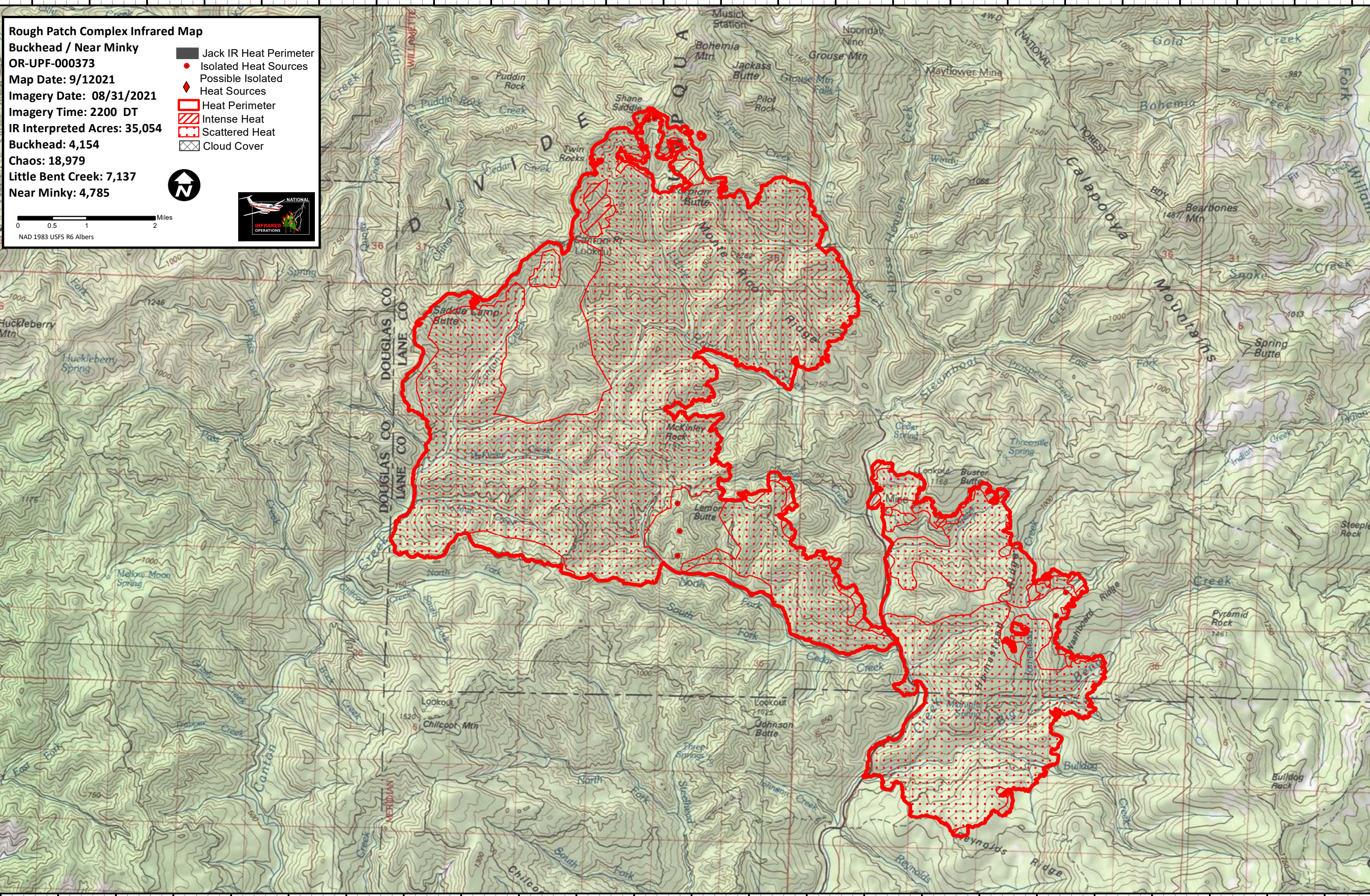



122°51'W 122°50'W 122°49'W 122°48'W 122°47'W 122°46'W 122°45'W 122°44'W 122°43'W 122°42'W 122°41'W 122°40'W 122°39'W 122°38'W 122°37'W 122°36'W 122°35'W 122°34'W 122°33'W 122°32'W 122°31'W 122°30'W 122°29'W 122°28'W



Rough Patch Complex Infrared Map
Buckhead / Near Minky
OR-UPF-000373
Map Date: 9/12/2021
Imagery Date: 08/31/2021
Imagery Time: 2200 DT
IR Interpreted Acres: 35,054
Buckhead: 4,154
Chaos: 18,979
Little Bent Creek: 7,137
Near Minky: 4,785

- Jack IR Heat Perimeter
- Isolated Heat Sources
- Possible Isolated
- ◆ Heat Sources
- ▭ Heat Perimeter
- ▨ Intense Heat
- ▩ Scattered Heat
- ⊠ Cloud Cover

0 0.5 1 2 Miles
 NAD 1983 USFS R6 Albers



122°51'W 122°50'W 122°49'W 122°48'W 122°47'W 122°46'W 122°45'W 122°44'W 122°43'W 122°42'W 122°41'W 122°40'W 122°39'W 122°38'W 122°37'W 122°36'W 122°35'W 122°34'W 122°33'W 122°32'W 122°31'W 122°30'W 122°29'W 122°28'W

43°34'N
43°33'N
43°32'N
43°31'N
43°30'N
43°29'N
43°28'N
43°27'N
43°26'N
43°25'N
43°24'N

43°35'N
43°34'N
43°33'N
43°32'N
43°31'N
43°30'N
43°29'N
43°28'N
43°27'N
43°26'N
43°25'N