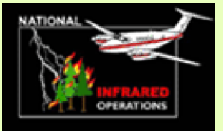



122°46'0"W 122°45'0"W 122°44'0"W 122°43'0"W 122°42'0"W 122°41'0"W 122°40'0"W 122°39'0"W 122°38'0"W 122°37'0"W 122°36'0"W 122°35'0"W 122°34'0"W 122°33'0"W 122°32'0"W 122°31'0"W 122°30'0"W 122°29'0"W 122°28'0"W

Rough Patch Complex North Infrared Map
Imagery flown 0003-0027 PDT
October 2, 2021
IRIN M McGann

Legend

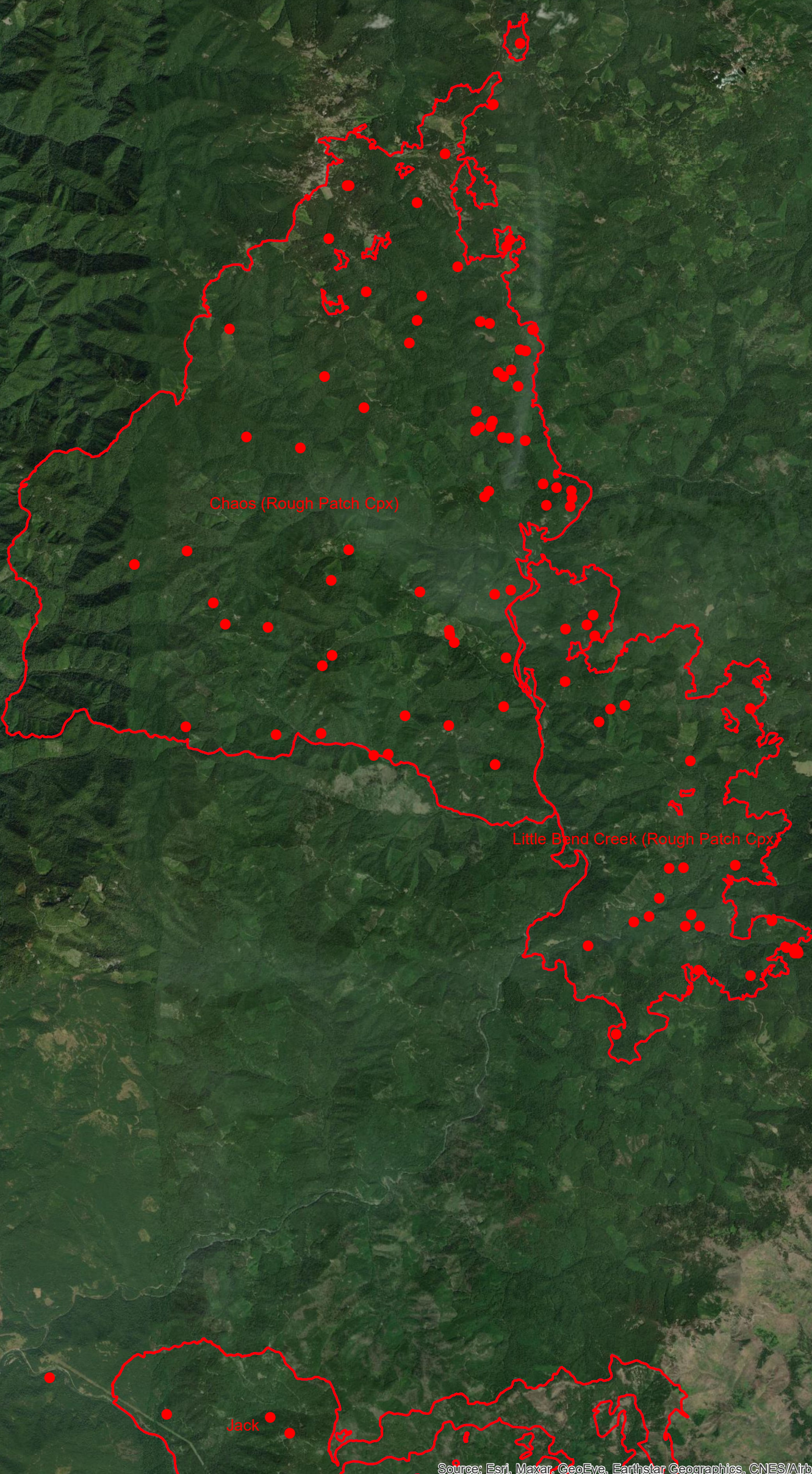
- Isolated Heat Sources
- ▭ Heat Perimeter



0 0.5 1 2 3 4 Miles

43°40'0"N
43°39'0"N
43°38'0"N
43°37'0"N
43°36'0"N
43°35'0"N
43°34'0"N
43°33'0"N
43°32'0"N
43°31'0"N
43°30'0"N
43°29'0"N
43°28'0"N
43°27'0"N
43°26'0"N
43°25'0"N
43°24'0"N
43°23'0"N
43°22'0"N
43°21'0"N
43°20'0"N

43°40'0"N
43°39'0"N
43°38'0"N
43°37'0"N
43°36'0"N
43°35'0"N
43°34'0"N
43°33'0"N
43°32'0"N
43°31'0"N
43°30'0"N
43°29'0"N
43°28'0"N
43°27'0"N
43°26'0"N
43°25'0"N
43°24'0"N
43°23'0"N
43°22'0"N
43°21'0"N
43°20'0"N



Source: Esri, Maxar, GeoEye, Earthstar Geographics, CNES/Airbus DS, USDA, USGS, AeroGRID, IGN, and the GIS User Community

122°46'0"W 122°45'0"W 122°44'0"W 122°43'0"W 122°42'0"W 122°41'0"W 122°40'0"W 122°39'0"W 122°38'0"W 122°37'0"W 122°36'0"W 122°35'0"W 122°34'0"W 122°33'0"W 122°32'0"W 122°31'0"W 122°30'0"W 122°29'0"W 122°28'0"W

43°19'0"N