

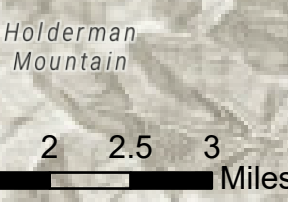
# Operations Map

Jack Fire

OR-UPF-000265

07/08/2021 - 24hr

4,228 acres at 07/07/2021 - 2328

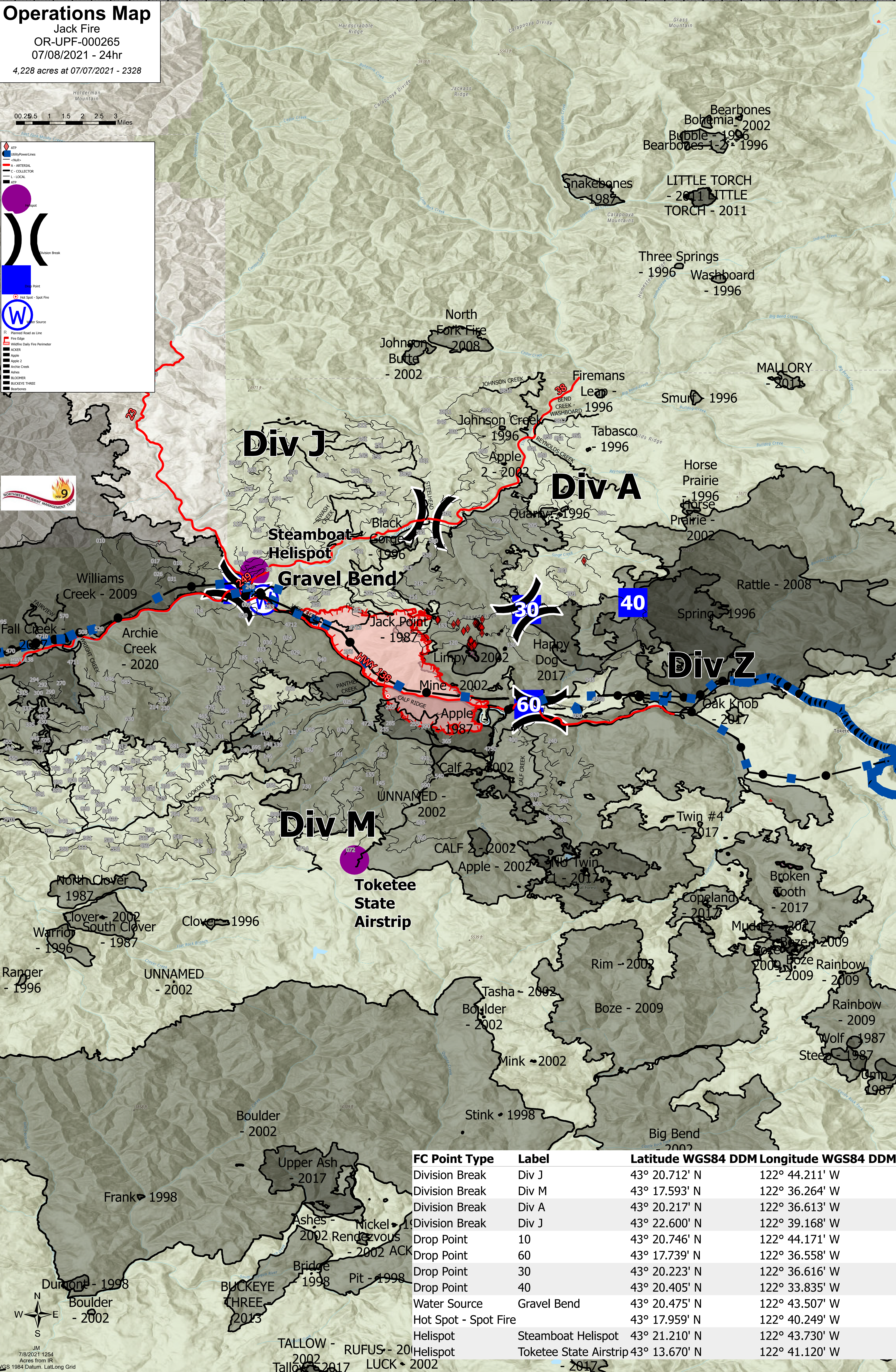


- ATP
- Utility/Power Lines
- Roads: Arterial, Collector, Local
- Fire Edges: Fire Edge, Active Daily Fire Perimeter
- Drop Points: 10, 30, 40, 60
- Water Source: Gravel Bend
- Hot Spot - Spot Fire
- Helispot
- Fire Types: ACKER, Apple, Apple 2, Active Creek, Ashes, BLOOMER, BUCKEYE THREE, Bearbones



W E S N

JM  
7/8/2021 1254  
Acres from IR  
WGS 1984 Datum, Lat/Long Grid



FC Point Type	Label	Latitude WGS84 DDM	Longitude WGS84 DDM
Division Break	Div J	43° 20.712' N	122° 44.211' W
Division Break	Div M	43° 17.593' N	122° 36.264' W
Division Break	Div A	43° 20.217' N	122° 36.613' W
Division Break	Div J	43° 22.600' N	122° 39.168' W
Drop Point	10	43° 20.746' N	122° 44.171' W
Drop Point	60	43° 17.739' N	122° 36.558' W
Drop Point	30	43° 20.223' N	122° 36.616' W
Drop Point	40	43° 20.405' N	122° 33.835' W
Water Source	Gravel Bend	43° 20.475' N	122° 43.507' W
Hot Spot - Spot Fire		43° 17.959' N	122° 40.249' W
Helispot	Steamboat Helispot	43° 21.210' N	122° 43.730' W
Helispot	Toketee State Airstrip	43° 13.670' N	122° 41.120' W