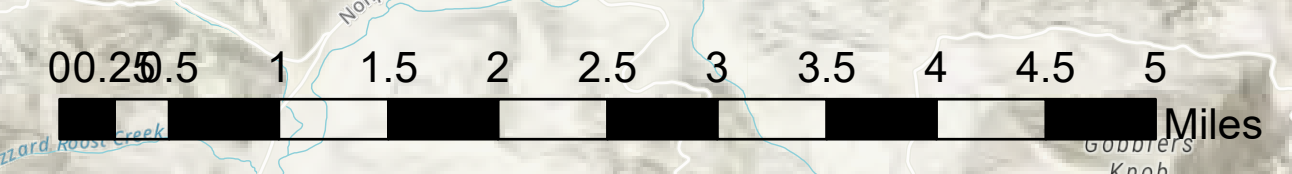


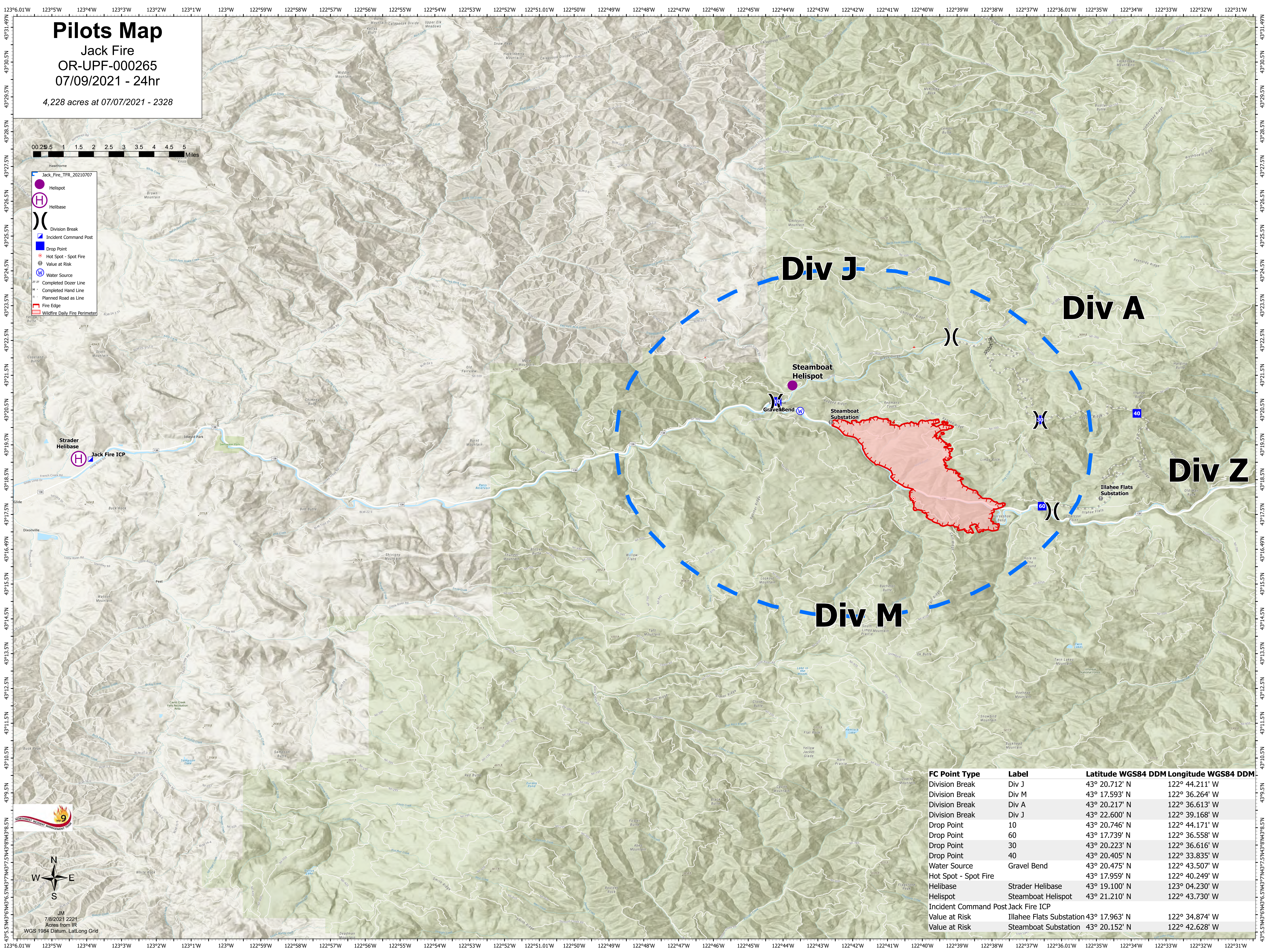
Pilots Map

Jack Fire
OR-UPF-000265
07/09/2021 - 24hr

4,228 acres at 07/07/2021 - 2328



- Jack_Fire_TFR_20210707
- Helispot
- H Helibase
-)) Division Break
- ICP Incident Command Post
- DP Drop Point
- Hot Spot - Spot Fire
- Value at Risk
- W Water Source
- Completed Dozer Line
- Completed Hand Line
- Planned Road as Line
- Fire Edge
- Wildfire Daily Fire Perimeter



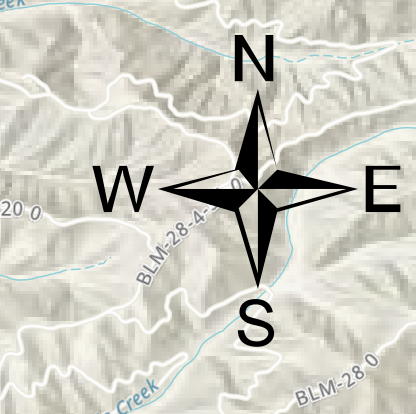
Div J

Div A

Div Z

Div M

FC Point Type	Label	Latitude WGS84	Longitude WGS84
Division Break	Div J	43° 20.712' N	122° 44.211' W
Division Break	Div M	43° 17.593' N	122° 36.264' W
Division Break	Div A	43° 20.217' N	122° 36.613' W
Division Break	Div J	43° 22.600' N	122° 39.168' W
Drop Point	10	43° 20.746' N	122° 44.171' W
Drop Point	60	43° 17.739' N	122° 36.558' W
Drop Point	30	43° 20.223' N	122° 36.616' W
Drop Point	40	43° 20.405' N	122° 33.835' W
Water Source	Gravel Bend	43° 20.457' N	122° 43.507' W
Hot Spot - Spot Fire		43° 17.959' N	122° 40.249' W
Helibase	Strader Helibase	43° 19.100' N	123° 04.230' W
Helispot	Steamboat Helispot	43° 21.210' N	122° 43.730' W
Incident Command Post Jack Fire ICP			
Value at Risk	Illahee Flats Substation	43° 17.963' N	122° 34.874' W
Value at Risk	Steamboat Substation	43° 20.152' N	122° 42.628' W



JM
7/8/2021 2221
Acres from IR
WGS 1984 Datum, LatLong Grid