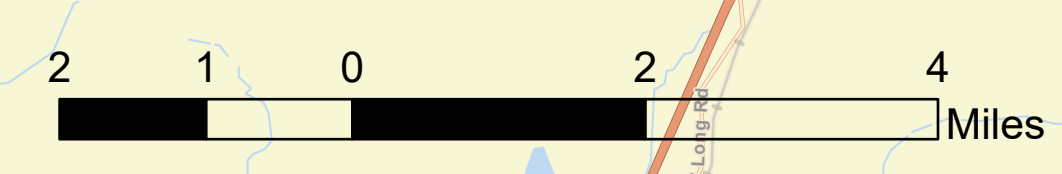


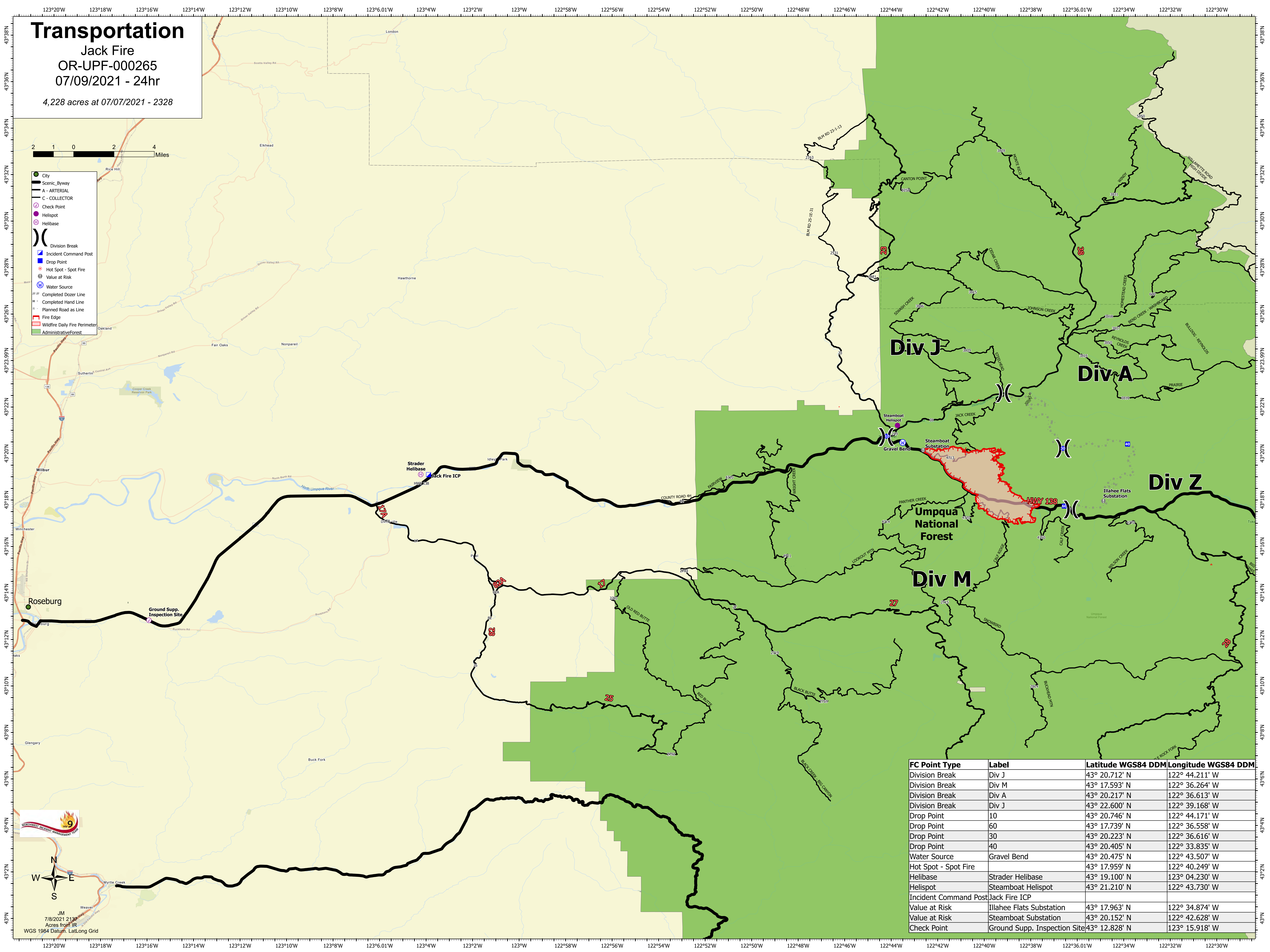
Transportation

Jack Fire
OR-UPF-000265
07/09/2021 - 24hr

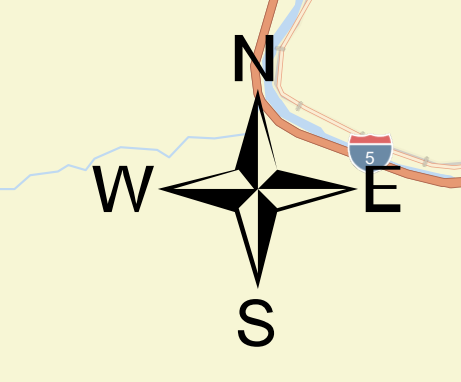
4,228 acres at 07/07/2021 - 2328



- City
- Scenic Byway
- A - ARTERIAL
- C - COLLECTOR
- Check Point
- Helispot
- Ⓜ Helibase
- ⌋ Division Break
- Ⓜ Incident Command Post
- Drop Point
- Hot Spot - Spot Fire
- Value at Risk
- Ⓜ Water Source
- ⋯ Completed Dozer Line
- ⋯ Completed Hand Line
- ⋯ Planned Road as Line
- Fire Edge
- Wildfire Daily Fire Perimeter
- Administrative Forest



FC Point Type	Label	Latitude WGS84 DDM	Longitude WGS84 DDM
Division Break	Div J	43° 20.712' N	122° 44.211' W
Division Break	Div M	43° 17.593' N	122° 36.264' W
Division Break	Div A	43° 20.217' N	122° 36.613' W
Division Break	Div J	43° 22.600' N	122° 39.168' W
Drop Point	10	43° 20.746' N	122° 44.171' W
Drop Point	60	43° 17.739' N	122° 36.558' W
Drop Point	30	43° 20.223' N	122° 36.616' W
Drop Point	40	43° 20.405' N	122° 33.835' W
Water Source	Gravel Bend	43° 20.475' N	122° 43.507' W
Hot Spot - Spot Fire		43° 17.959' N	122° 40.249' W
Helibase	Strader Helibase	43° 19.100' N	123° 04.230' W
Helispot	Steamboat Helispot	43° 21.210' N	122° 43.730' W
Incident Command Post	Jack Fire ICP		
Value at Risk	Illahaee Flats Substation	43° 17.963' N	122° 34.874' W
Value at Risk	Steamboat Substation	43° 20.152' N	122° 42.628' W
Check Point	Ground Supp. Inspection Site	43° 12.828' N	123° 15.918' W



JM
7/8/2021 2:13P
Acres from IR
WGS 1984 Datum, Lat/Long Grid